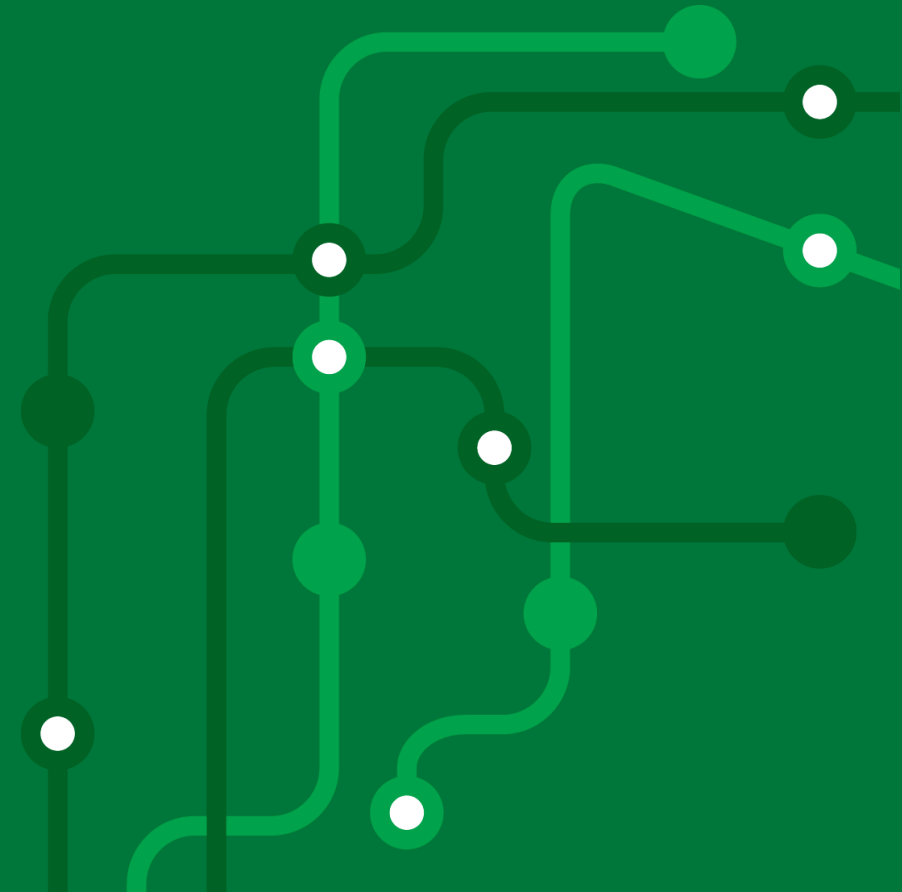


# Transport **North East**

## Transport Dashboard

**Monthly update**  
December 2023

Moving to a green, healthy, dynamic and thriving North East.



# Monthly highlights



Bus passenger numbers in November were estimated to be around **64%** of 2022 levels.



Metro passenger numbers in November were estimated to be **92%** of 2022 levels.



Overall, both weekday and weekend traffic speeds in November 2023 have been slightly slower than in November 2022

Source: [Microsoft Power BI](#) (Urban Traffic Management Centre)



Daily November pedestrian rates at Millennium Bridge were **15% down** on October volumes

Source: Transport North East Counter Data



During November, average occupancy at the Park and Ride site at Kingston Park Metro station was **57%** during peak weekend hours. This was 23% in November 2022

Source: [Microsoft Power BI](#) (Urban Traffic Management Centre)



For the 9 reporting periods of the year so far, there have been 288,058 Shields Ferry customer journeys

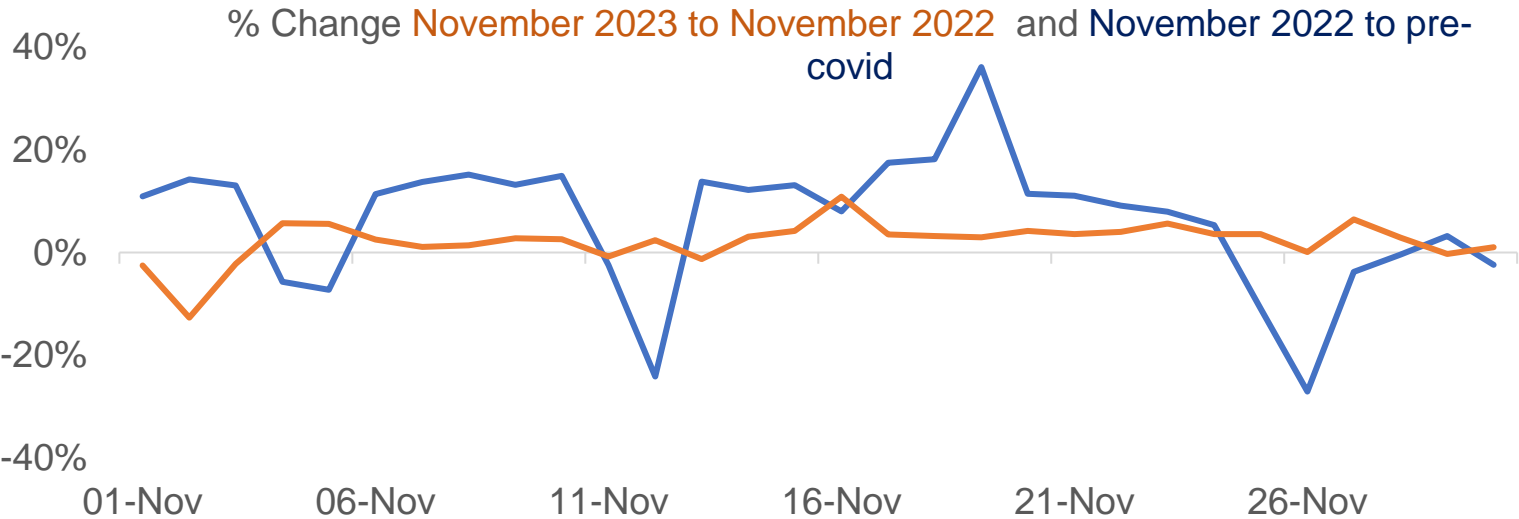
Source: [Report: Shields Ferry - North East Evidence Hub \(northeastlep.co.uk\)](#)

Moving to a green, healthy, dynamic and thriving North East.

**Transport North East**

# Road traffic

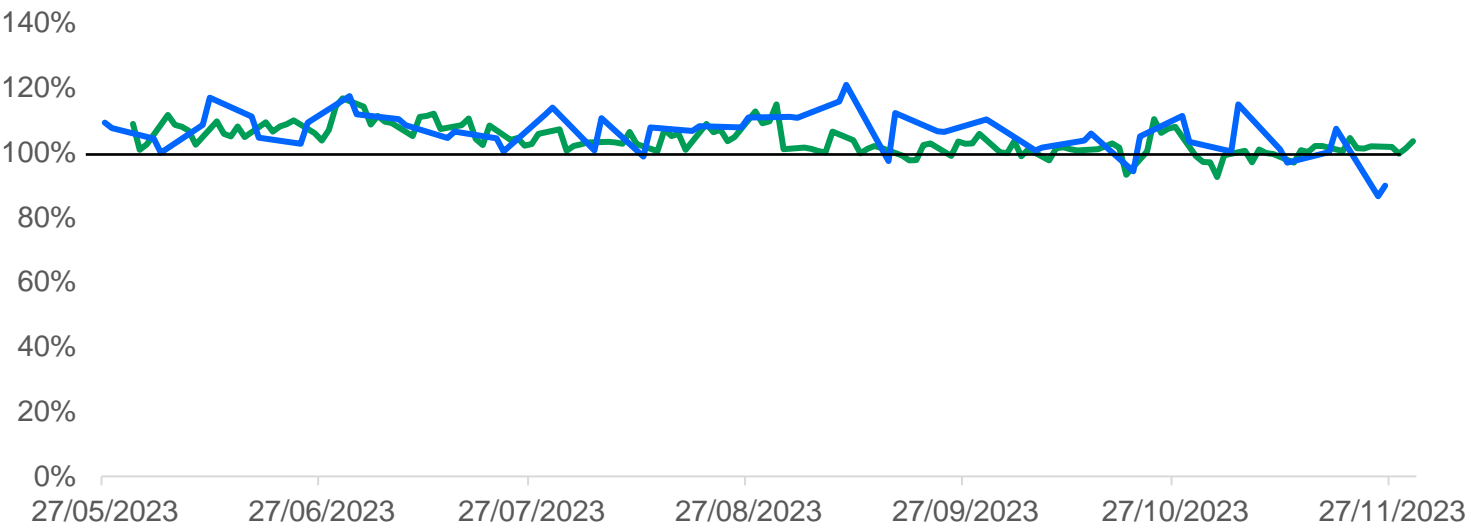
## Tyne and Wear Traffic



Source: Tyne Wear UTMC

Overall, through November 2023 traffic levels across Tyne and Wear were around 1% higher than November 2022 levels. November 2022 traffic levels were slightly below pre-Covid levels.

## Tyne Tunnel Traffic

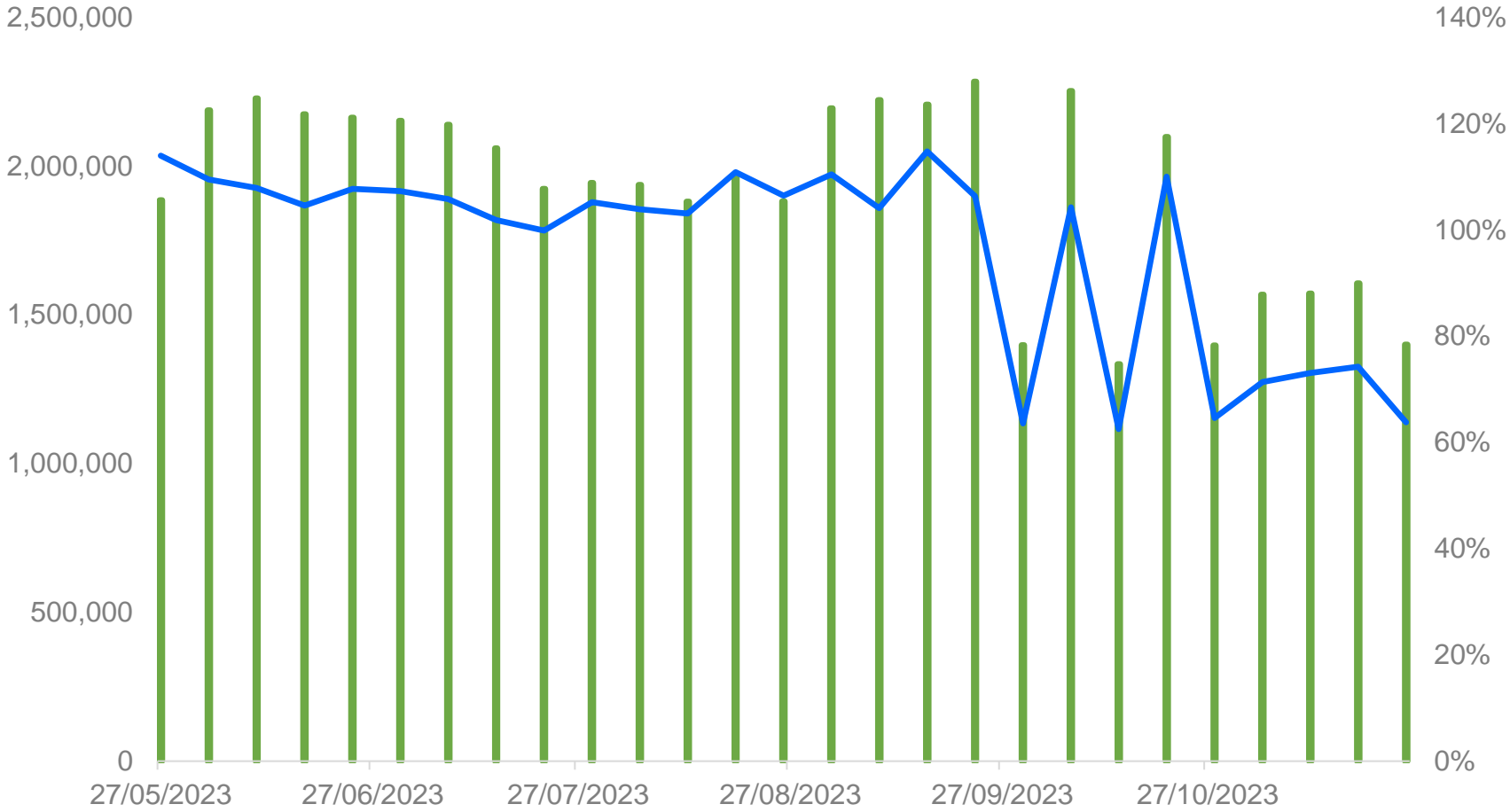


Source: TT2

Traffic through the Tyne Tunnel continues to be higher than budgeted.

# Sustainable transport - Bus

Estimated weekly bus patronage and % of the equivalent period in 2022

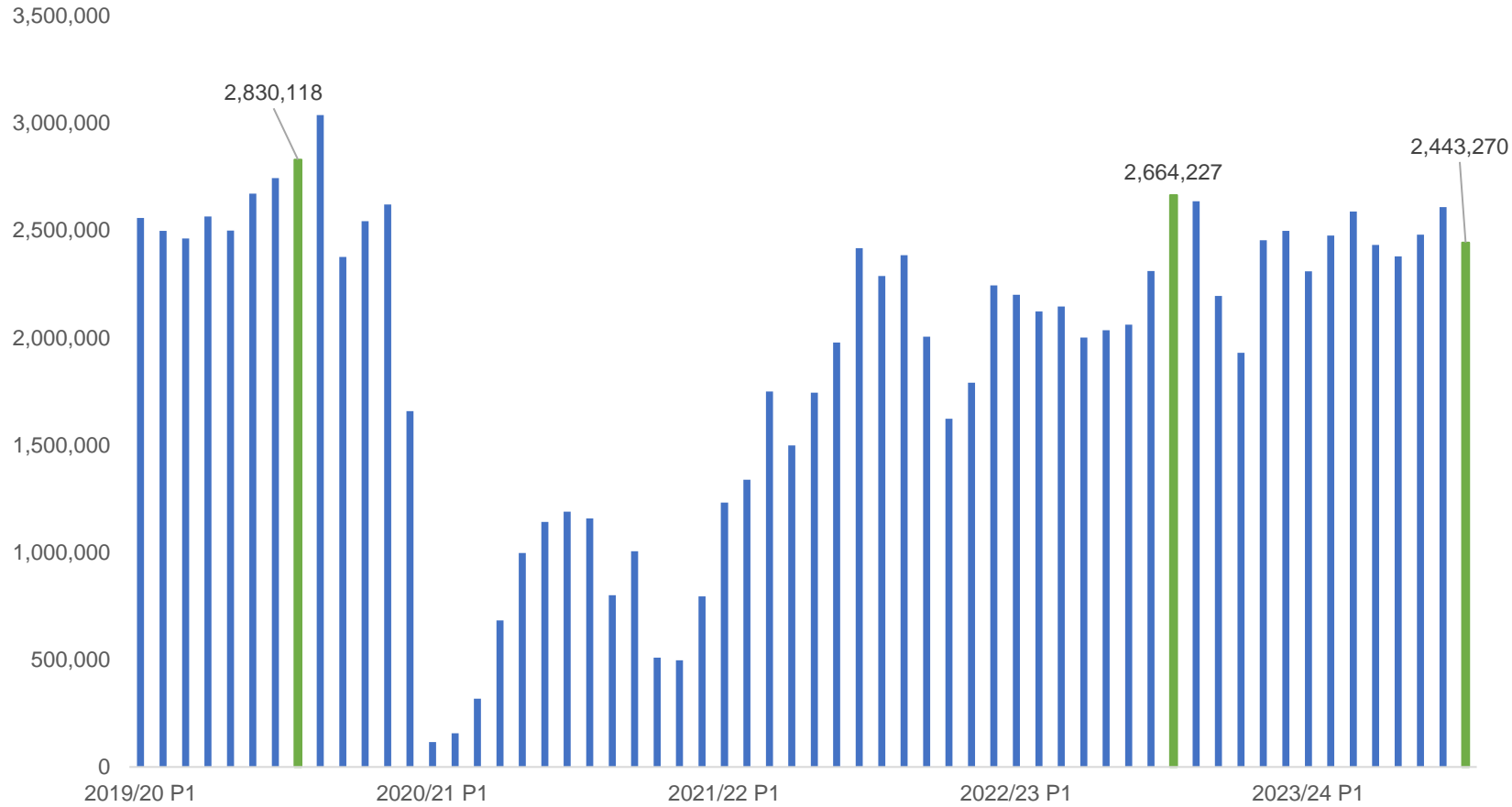


Bus patronage for November 2023 was **6m** passengers. In the same period in 2022 patronage was **9.4m**.

Passenger numbers have been affected by bus strikes.

Source: Bus operators (Confederation of Passenger Transport)

## Estimated Passenger Boardings

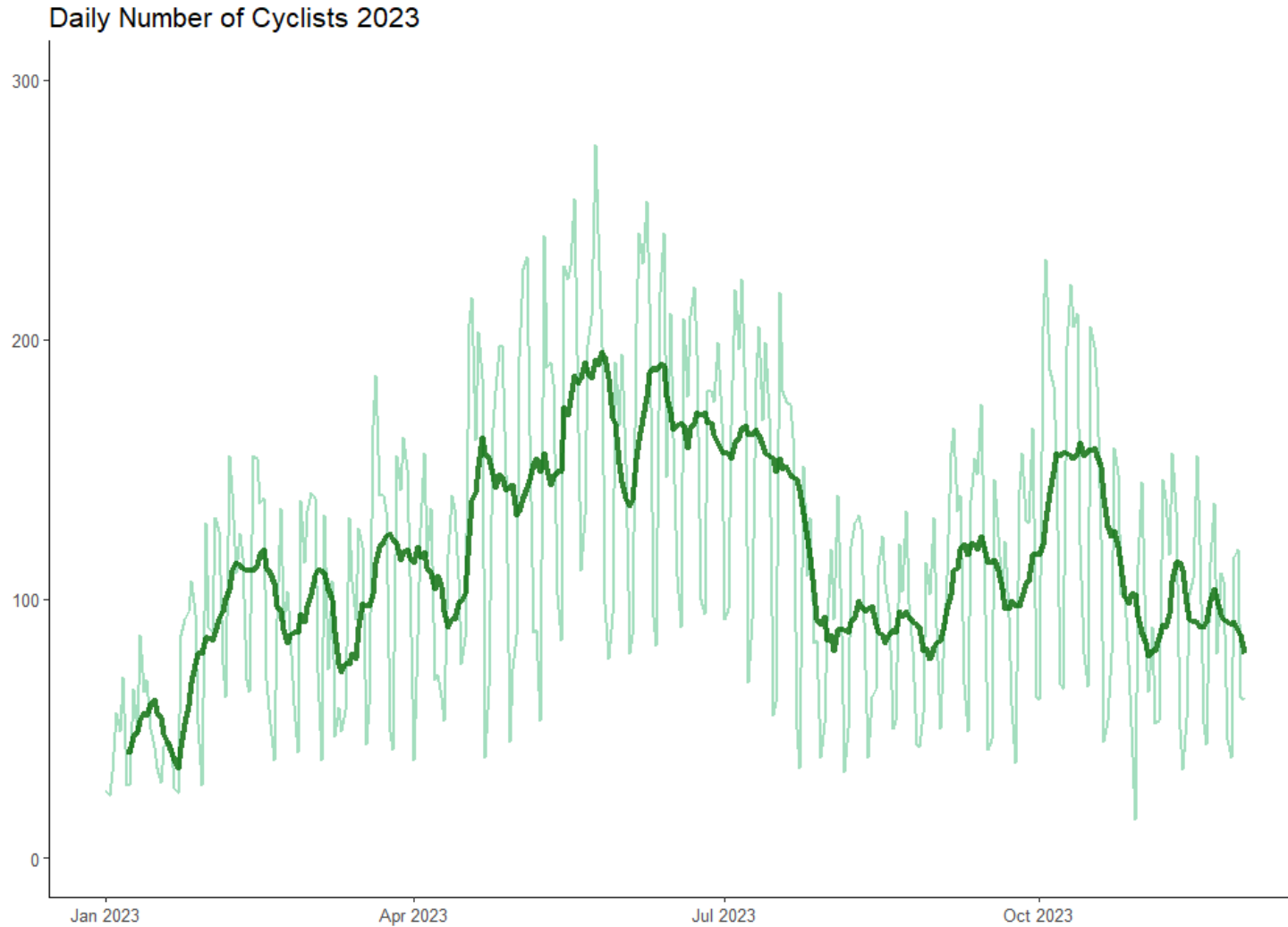


Estimated passenger numbers in the most recent period are below the same period in 2022, at **2,443,270** compared to **2,664,227**.

Passenger boardings in the equivalent period in 2019/20 were **2,830,118**.

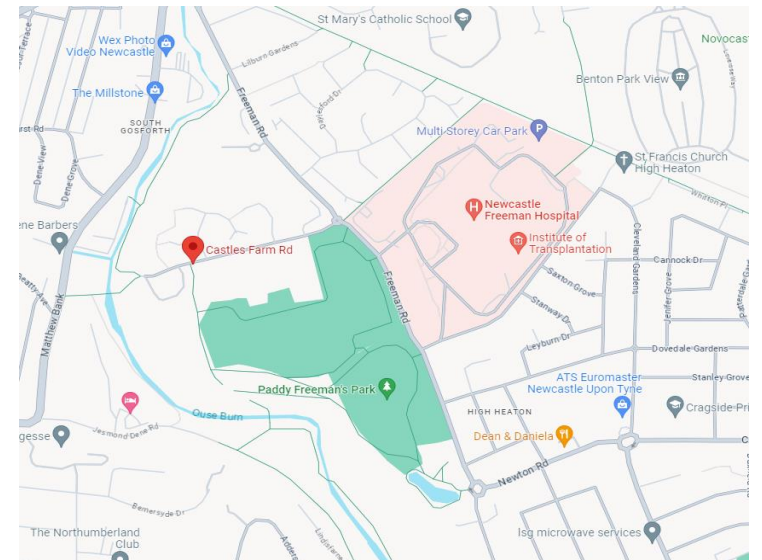
Source: Nexus

# Active Travel



The graph on this slide shows the volumes of cyclists at Castles Farm Road in Newcastle through 2023. The darker line is the 7 day moving average. We can see a steady increase in the first period of the year before a decline throughout July. Figures increased again during September and early October. October's figures may have been influenced by inclement weather conditions throughout the month.

On an average day across this period, **117 cyclists passed this area**. The fewest cyclists passing this area was 15 and the most was 275.

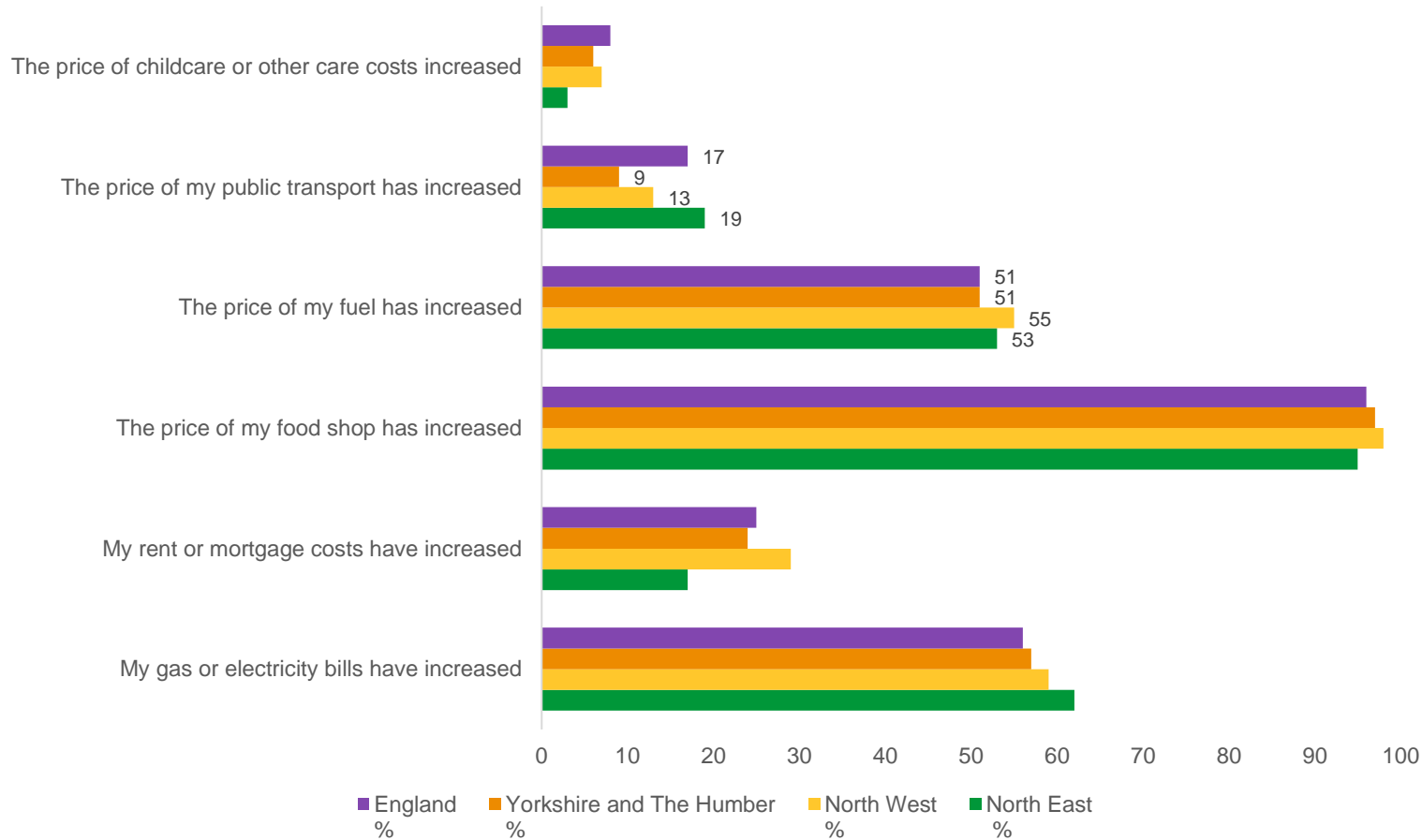


Source: Transport North East Counter Data, map from Google Maps

Moving to a green, healthy, dynamic and thriving North East.

**Transport North East**

# Cost of Living and Transport



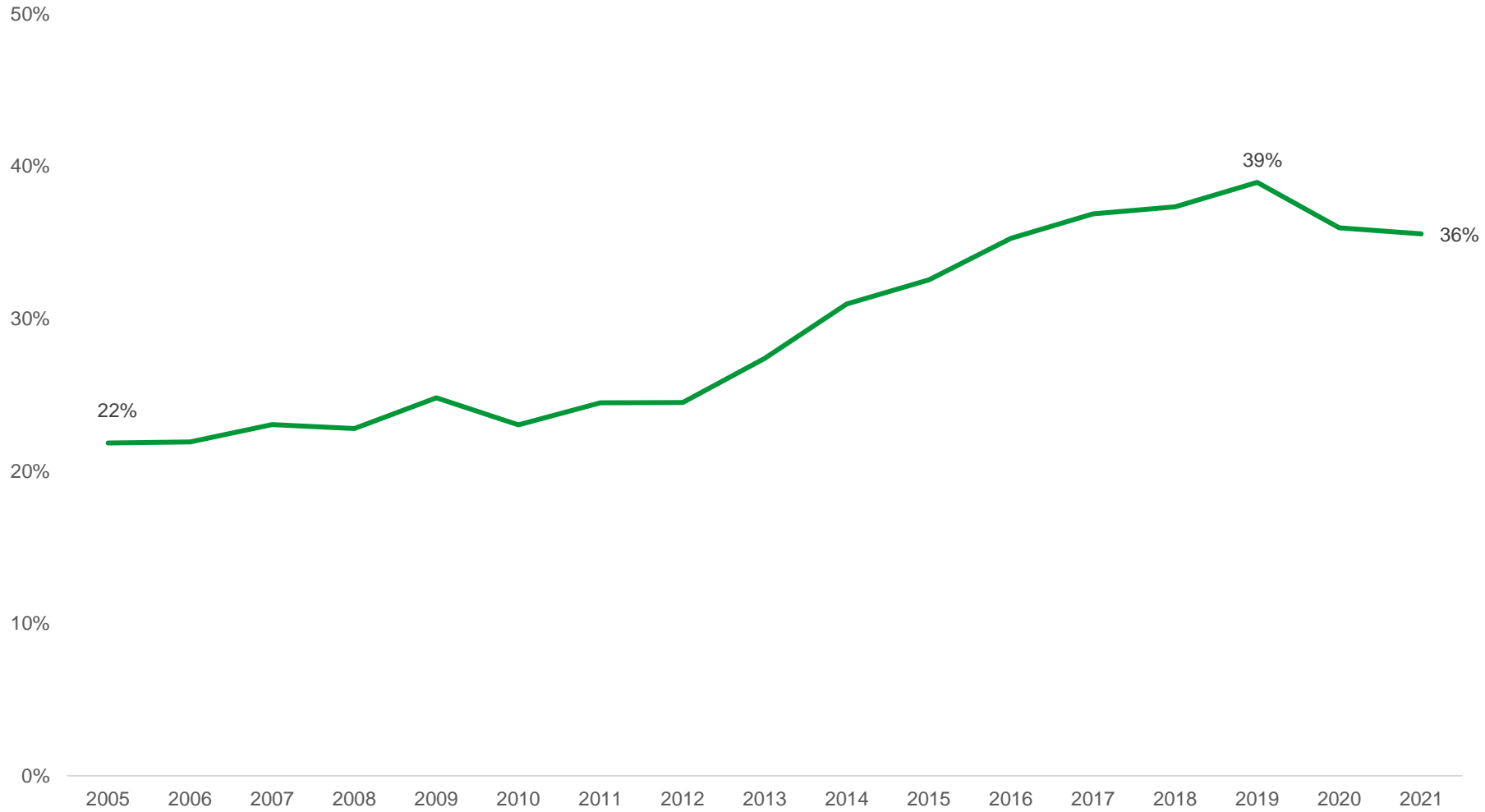
The cost of living feature this month focusses on the factors people feel are impacting them during the cost of living crisis in the North East and some comparator regions.

We can see that the North East was higher than the North West, Yorkshire and the Humber and the national average in reporting that the price of their public transport usage had increased over the last month. This was the 4<sup>th</sup> largest factor people felt were impacting them compared to the month prior, behind the price of food shopping, fuel and gas and electricity bills. Over half of North Eastern respondents reported the price of their fuel increasing across the period.

Source: Office for National Statistics [Impact of increased cost of living on adults across Great Britain: July to October 2023](https://www.ons.gov.uk/news-releases/2023/10/11/impact-of-increased-cost-of-living-on-adults-across-great-britain-july-to-october-2023) - Office for National Statistics (ons.gov.uk)

# Transport and Air Pollution

North East Road Transport as a Proportion of Total CO2 Emissions (Kt CO2 e)



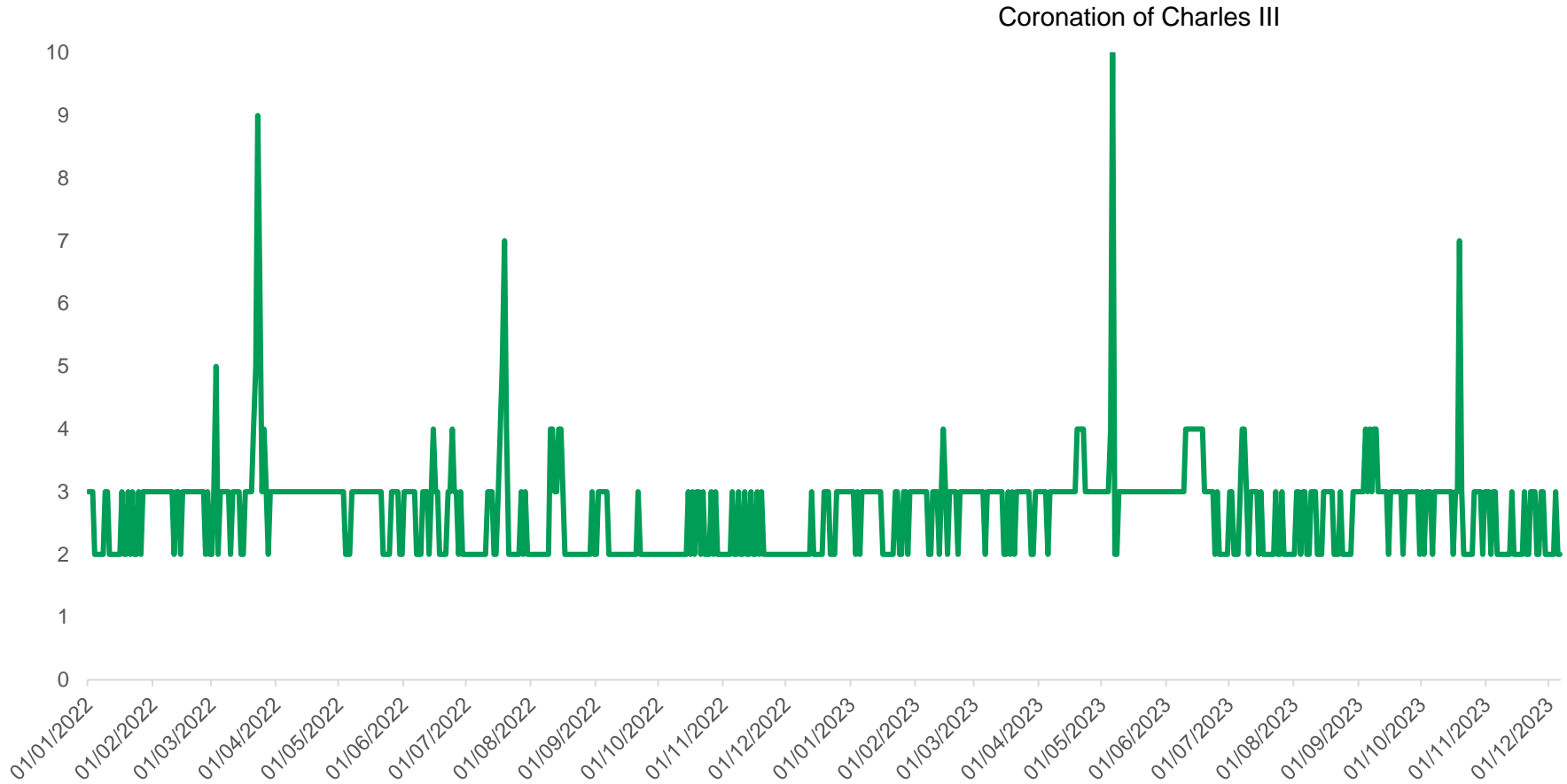
Our spotlight feature this month focusses on transport and regional air pollution. On this slide, we can see that the proportion of overall air pollution that can be attributed to road transport was 36% in 2021. Transport holistically was the second highest contributor proportionally to regional CO2 emissions behind only the domestic industry.

Source: [UK greenhouse gas emissions: local authority and regional - data.gov.uk](https://www.gov.uk/government/collections/uk-greenhouse-gas-emissions-local-authority-and-regional-data)



# Transport and Air Pollution

North East Daily Air Quality Index



The overall [air pollution index](#) for a site or region is determined by the highest concentration of five pollutants:

- Nitrogen Dioxide
- Sulphur Dioxide
- Ozone
- Particles < 2.5µm (PM<sub>2.5</sub>)
- Particles < 10µm (PM<sub>10</sub>)

The DAQI uses a 1-10 index divided into four bands ('Low', 'Moderate', 'High' and 'Very High') to provide more detail about air pollution levels in a simple way. In 2023 so far, 93% of days have been in the low band.



Low

Moderate

High

Very High

Source: [Daily Air Quality Index - Defra, UK](#)

Moving to a green, healthy, dynamic and thriving North East.

**Transport North East**

Moving to a green, healthy, dynamic and thriving North East.

**Transport North East**