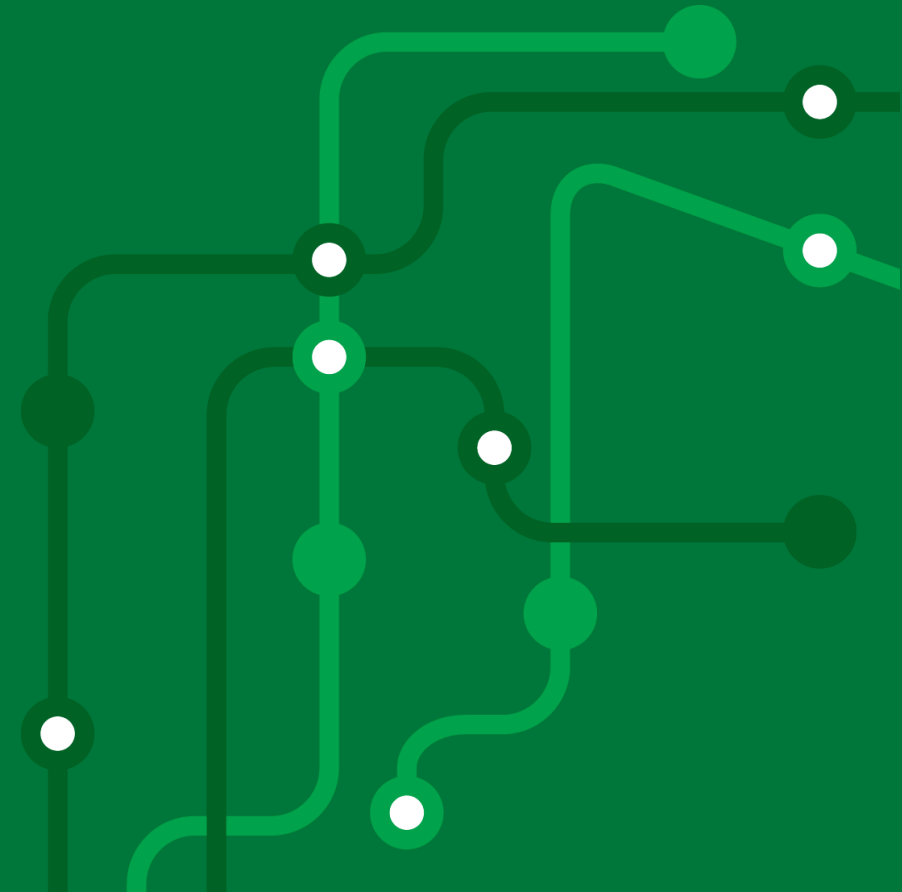


Transport **North East**

Transport Dashboard

Monthly update
October 2023

Moving to a green, healthy, dynamic and thriving North East.



Monthly highlights



Bus passenger numbers in September were estimated to be around **109%** of 2022 levels.



Metro passenger numbers in September were estimated to be **101%** of the previous period.



Overall, traffic speeds in 2023 have been slightly slower than in 2022

Source: [Microsoft Power BI](#) (Urban Traffic Management Centre)



Daily September cyclist rates at the Town Moor were **28% up** on August volumes

Source: Transport North East Counter Data



During September, average occupancy at the long stay Park and Ride site at Heworth Metro station was **36%** during peak weekday hours. This was 32% in September 2022

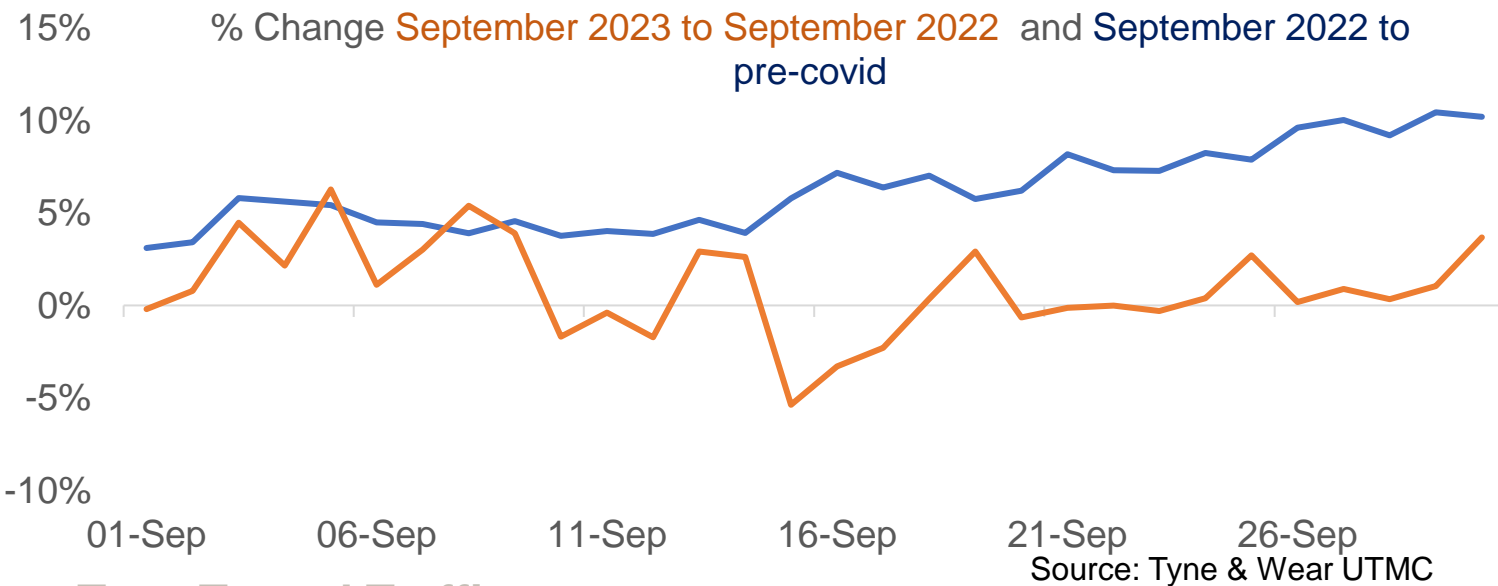
Source: [Microsoft Power BI](#) (Urban Traffic Management Centre)



According to the National Travel Survey, in 2022, the average number of commuting trips a year was 131, making up 13% of all trips.

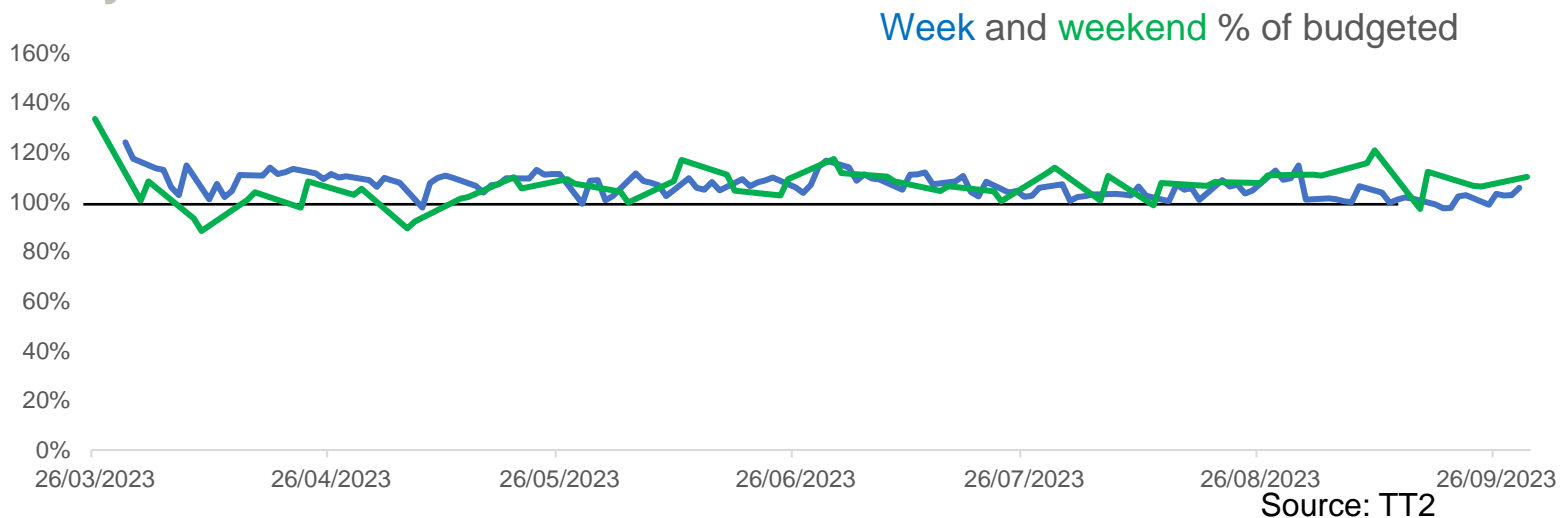
Road traffic

Tyne and Wear Traffic



Overall, through September 2023 traffic levels across Tyne and Wear were similar to September 2023 levels. September 2022 traffic levels were above pre-Covid levels.

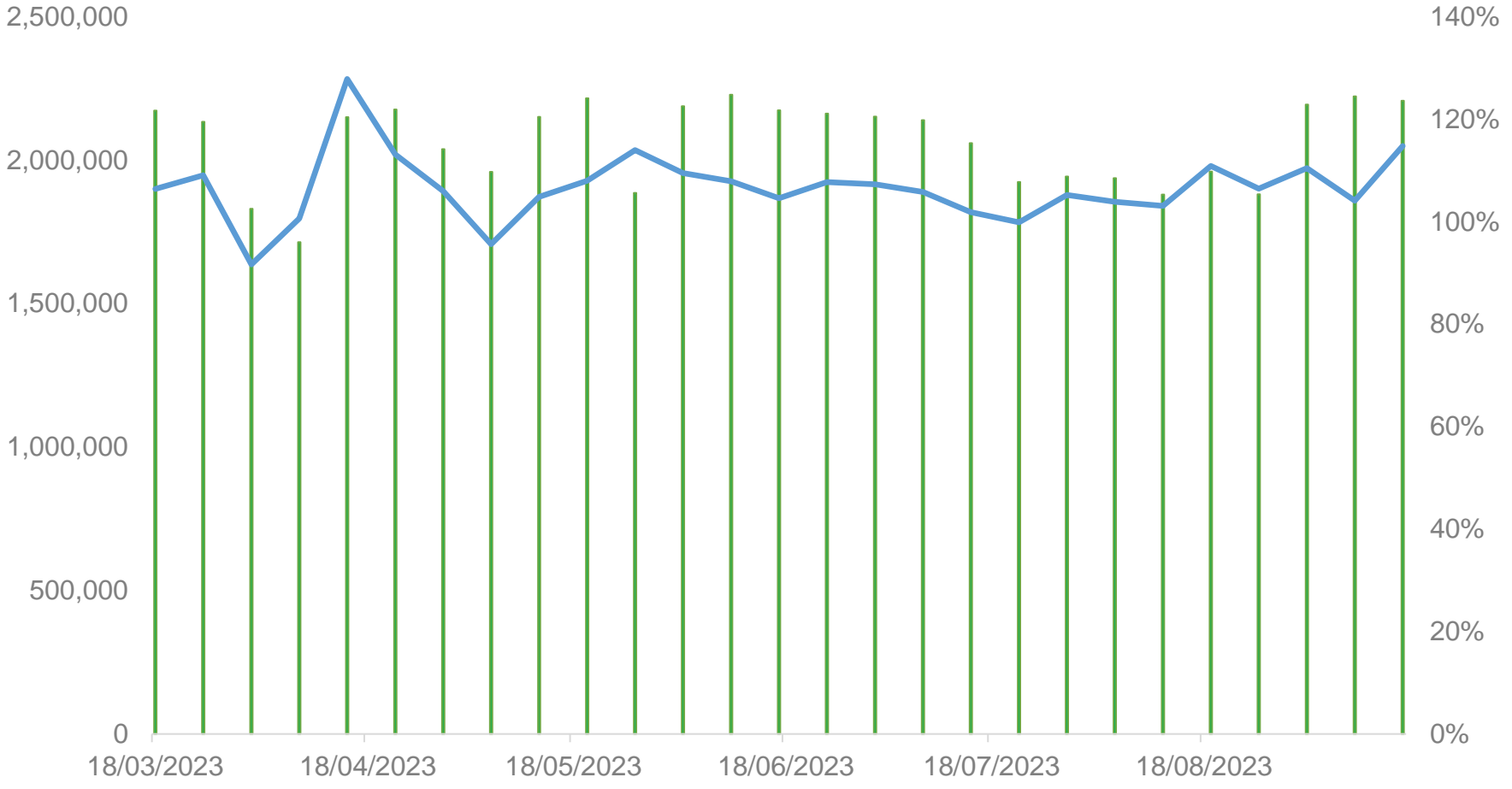
Tyne Tunnel Traffic



Traffic through the Tyne Tunnel continues to be higher than budgeted.

Sustainable transport - Bus

Estimated bus patronage and % of the equivalent period in the previous year



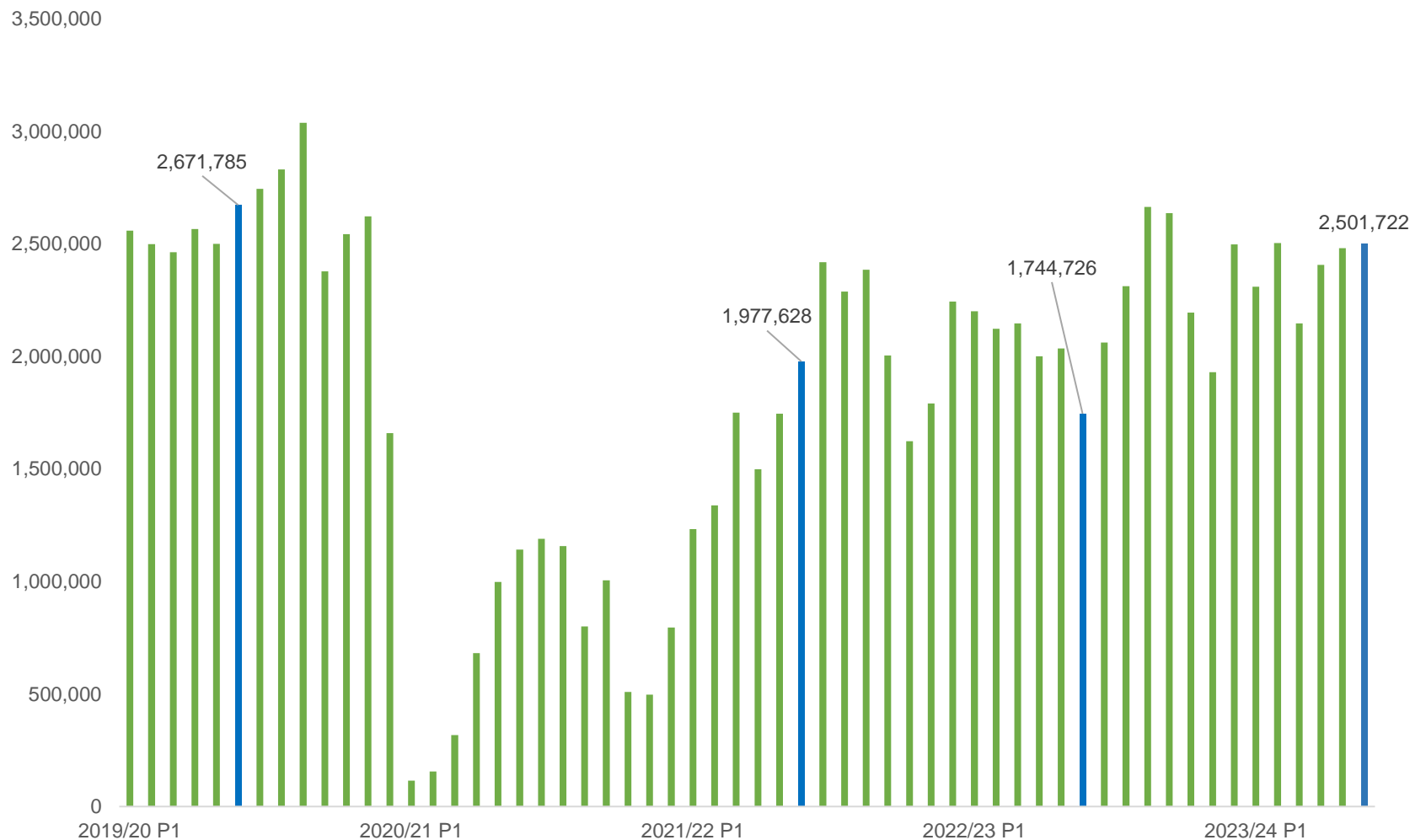
Bus patronage for the first three weeks in September 2023 was **6.94m** passengers. In the same period in 2022 patronage was **6.34m**.

Source: Bus operators (Confederation of Passenger Transport)

Moving to a green, healthy, dynamic and thriving North East.

Transport North East

Estimated Passenger Boardings



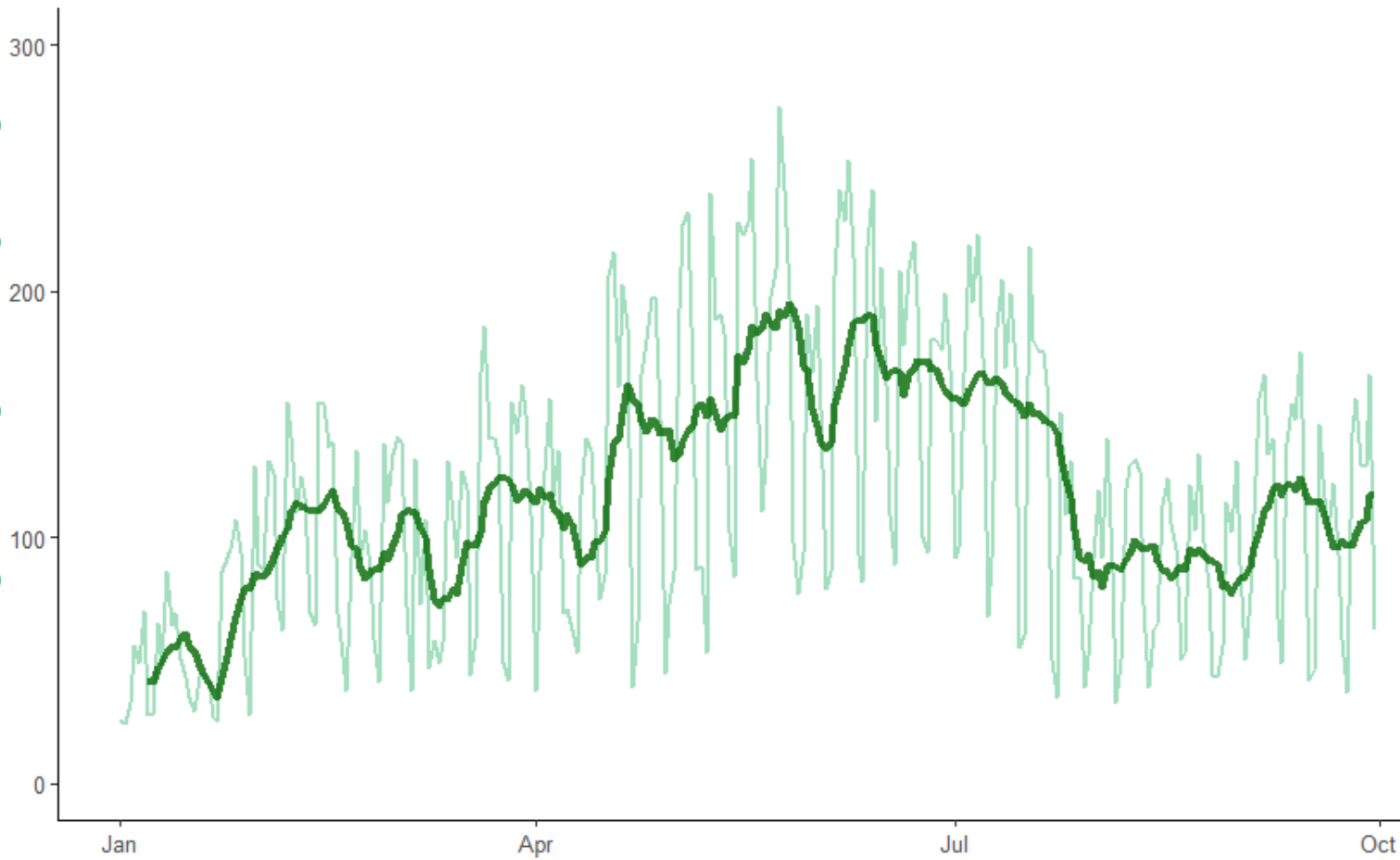
Estimated passenger numbers in the most recent period are above the same period in 2022, at **2,501,722**.

Passenger boardings in the equivalent period in 2019/20 were **1,744,726**, although that was a particularly low patronage period, including Metro Flow line closures.

Source: Nexus

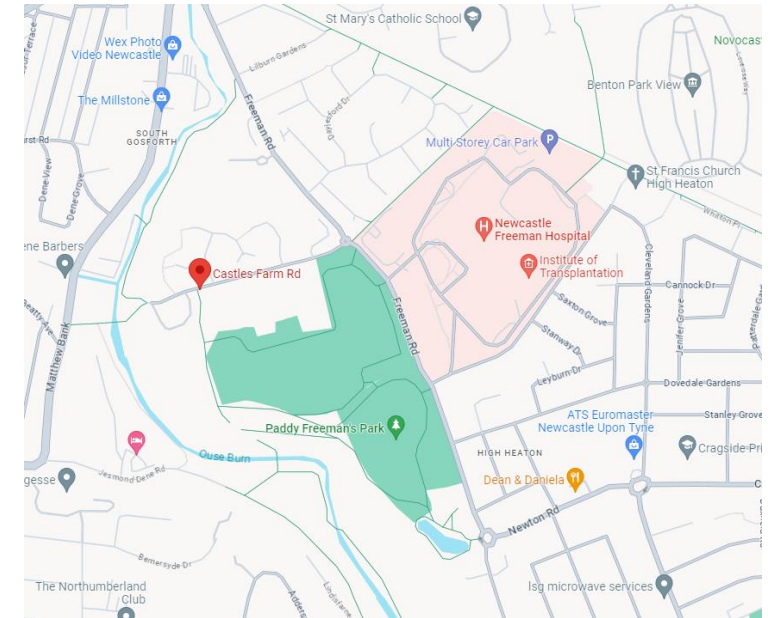
Active Travel

Daily Number of Cyclists 2023



The graph on this slide shows the volumes of cyclists at Castles Farm Road in Newcastle through 2023. The darker line is the 7 day moving average. We can see a steady increase in the first period of the year before a decline throughout July.

On an average day across this period, **118 cyclists passed this area**. The fewest cyclists passing this area was 24 and the most was 275.

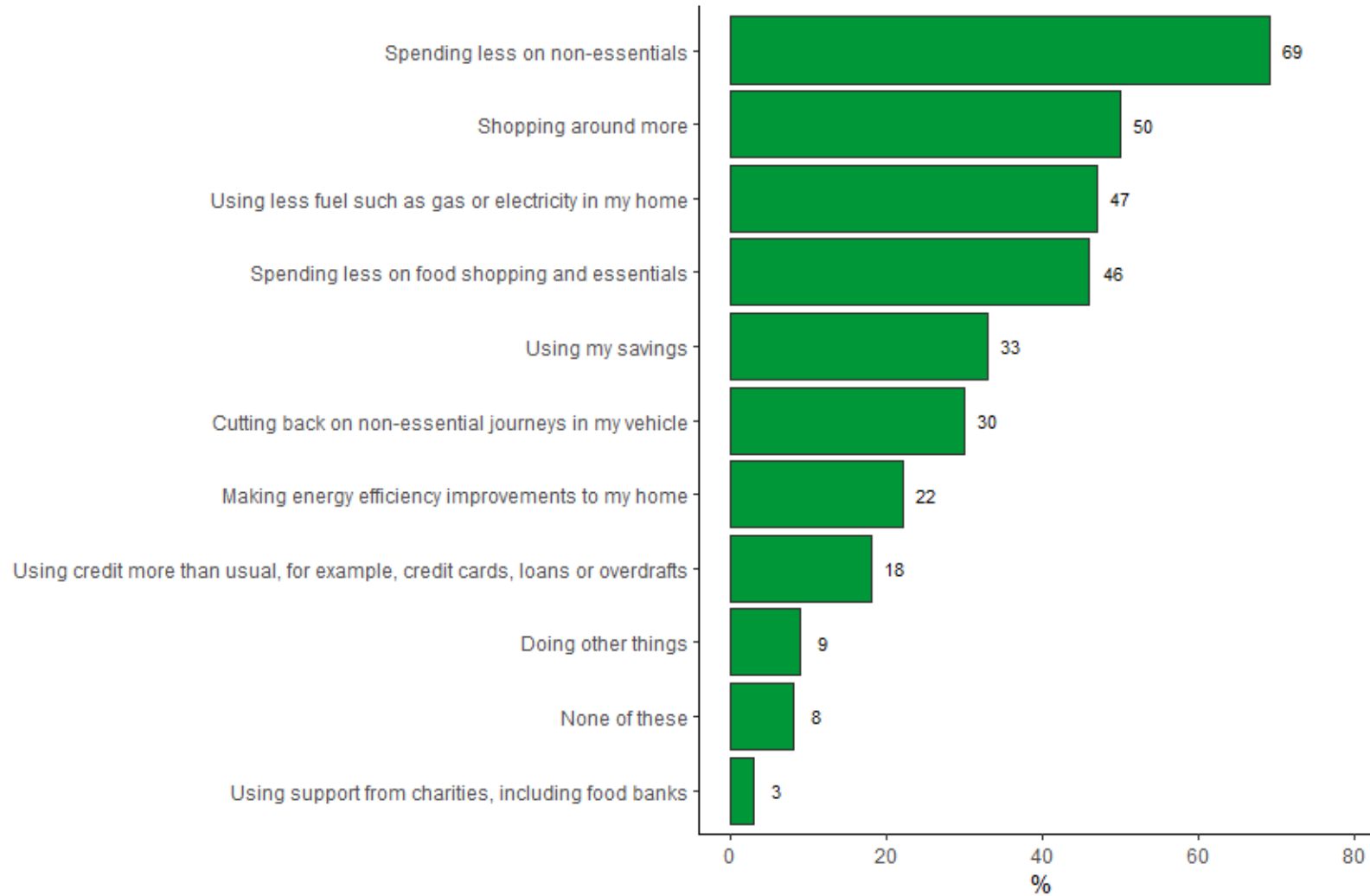


Source: Transport North East Counter Data, map from Google Maps

Moving to a green, healthy, dynamic and thriving North East.

Transport North East

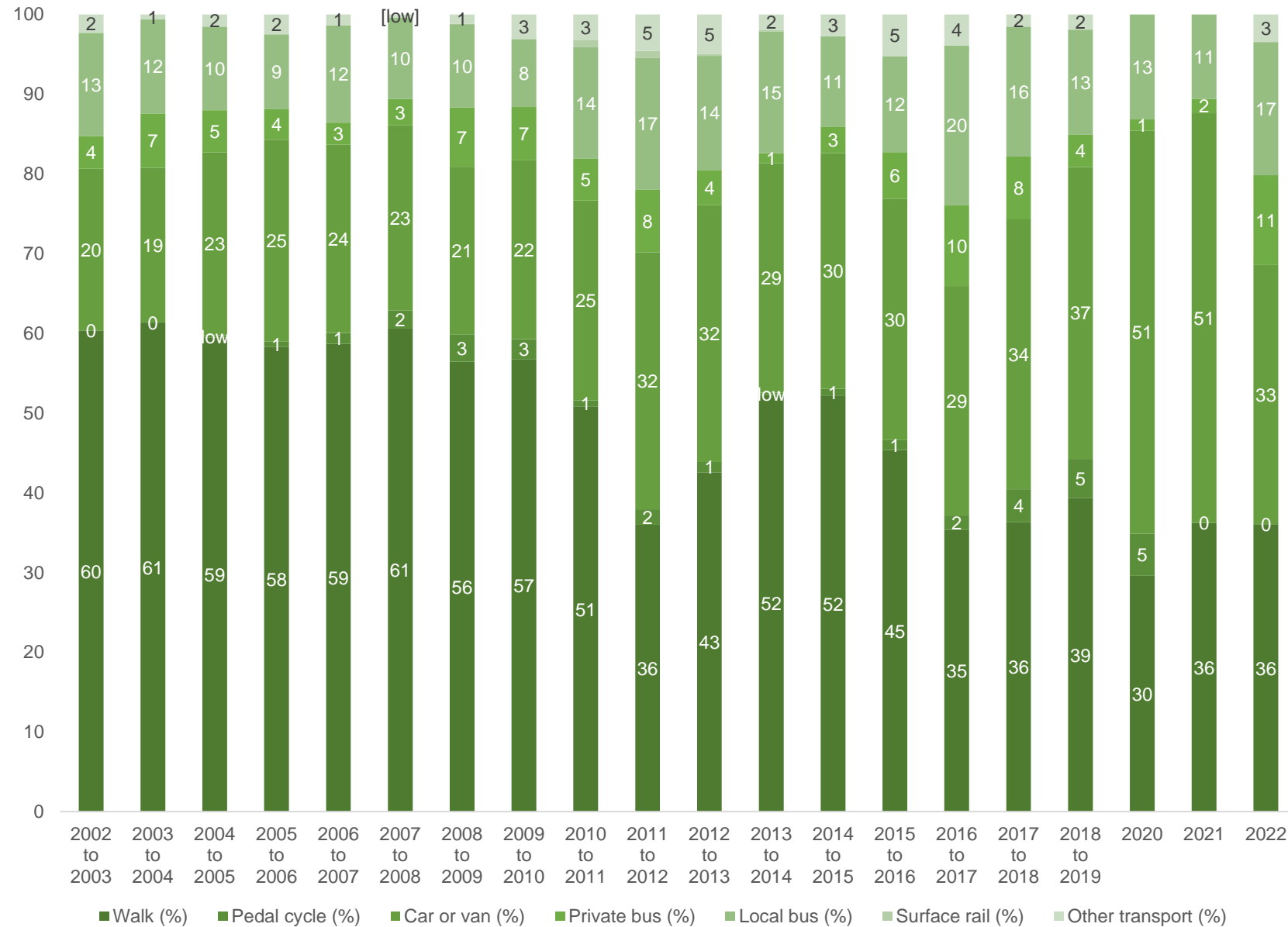
Cost of Living and Transport



The cost of living feature this month focusses on the steps people are taking to cope with the cost of living crisis, focussing specifically on people's propensity to cut back on non-essential journeys. 30% of respondents in September reported cutting down on non-essential journeys in their vehicle. This was less frequent than someone using their savings (33%). Those spending less on non-essentials rose from 62% in August to 69% in September.

Source: Office for National Statistics [Cost of living insights - Office for National Statistics \(ons.gov.uk\)](https://ons.gov.uk/cost-of-living)

Travel to School



Our spotlight feature this month looks at scholastic travel (5-16) in the North East between 2002-2022.

In 2022, around **36%** of our region’s school trips (for those aged 5-16) were made by active travel and 33% were made by a car or a van. This signalled a closer distribution to pre-pandemic figures than 2020 and 2021, where a higher proportion of trips were made by car. We can see significant changes from around the turn of the millennium, where around 60% of school trips were walked.

Source: 2022 National Travel Survey

Moving to a green, healthy, dynamic and thriving North East.

Transport North East