

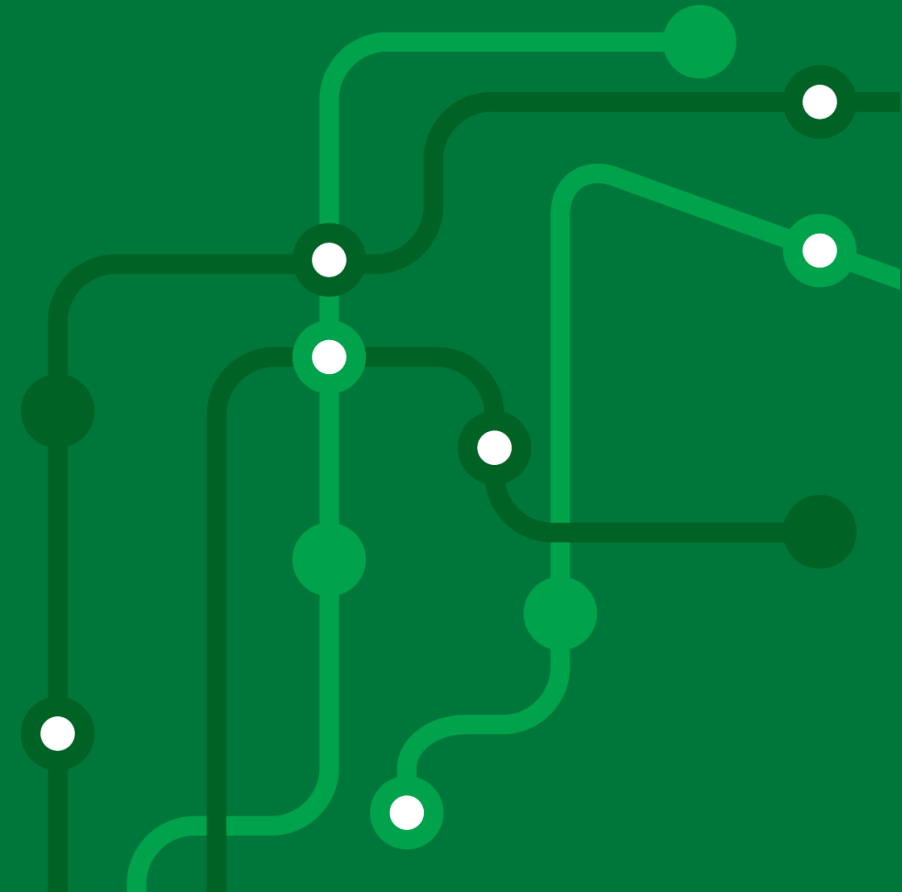
# Transport **North East**

## Transport Dashboard

Monthly update

12th September 2023

Moving to a green, healthy, dynamic and thriving North East.



# Monthly highlights



Bus passenger numbers in August were estimated to be around **103%** of 2022 levels.



Metro passenger numbers in August were estimated to be **112%** of 2022 levels.



Overall, for the year to date traffic speeds have been slightly slower than in 2022

Source: [Microsoft Power BI](#) (Urban Traffic Management Centre)



Daily August cyclist rates at the Millenium Bridge were **3% down** on July volumes

Source: Transport North East Counter Data



During August, average occupancy at the long stay Park and Ride site at Heworth Metro station was **35%** during peak weekday hours. This was 25% in August 2022

Source: [Microsoft Power BI](#) (Urban Traffic Management Centre)

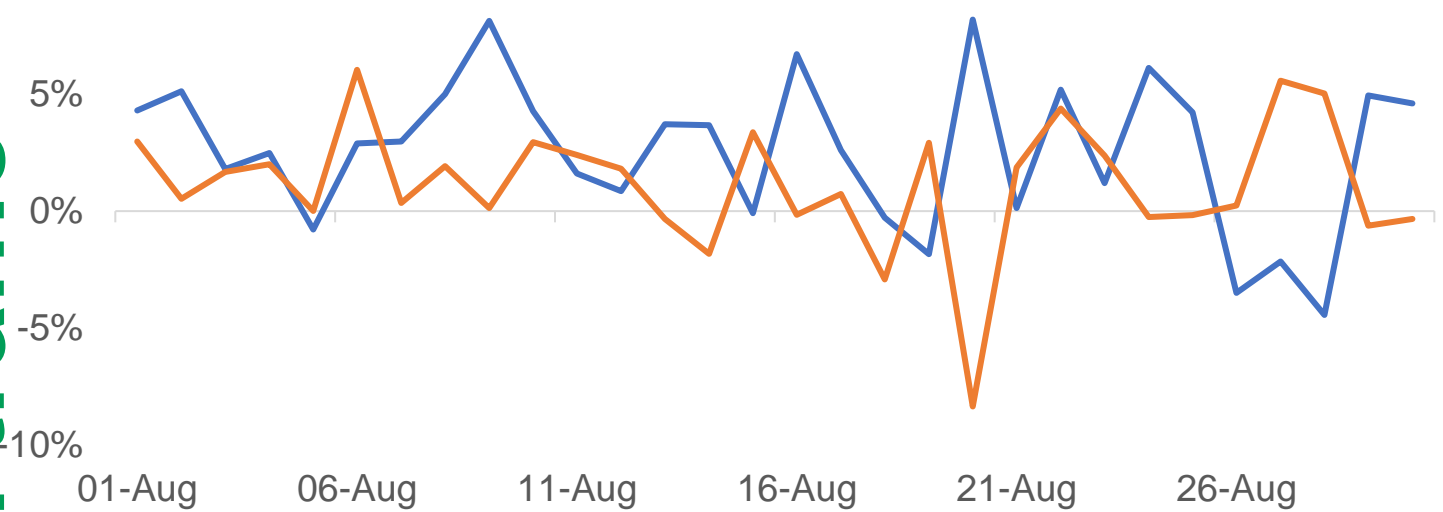


According to the National Travel Survey, in 2022, the average number of commuting trips a year was 131, making up 13% of all trips.

# Road traffic

## Tyne and Wear Traffic

% Change August 2023 to August 2022 and August 2022 to pre-covid

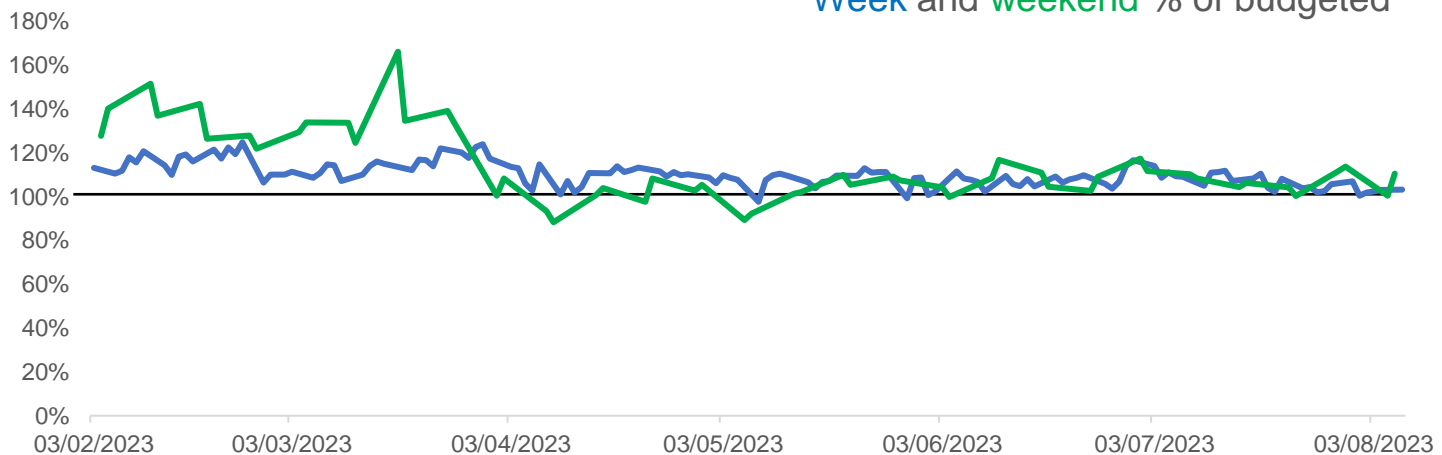


Source: Tyne & Wear UTMC

Overall, through August 2023 traffic levels across Tyne and Wear were similar to August 2023 levels. August 2022 traffic levels were generally above pre-Covid levels.

## Tyne Tunnel Traffic

Week and weekend % of budgeted

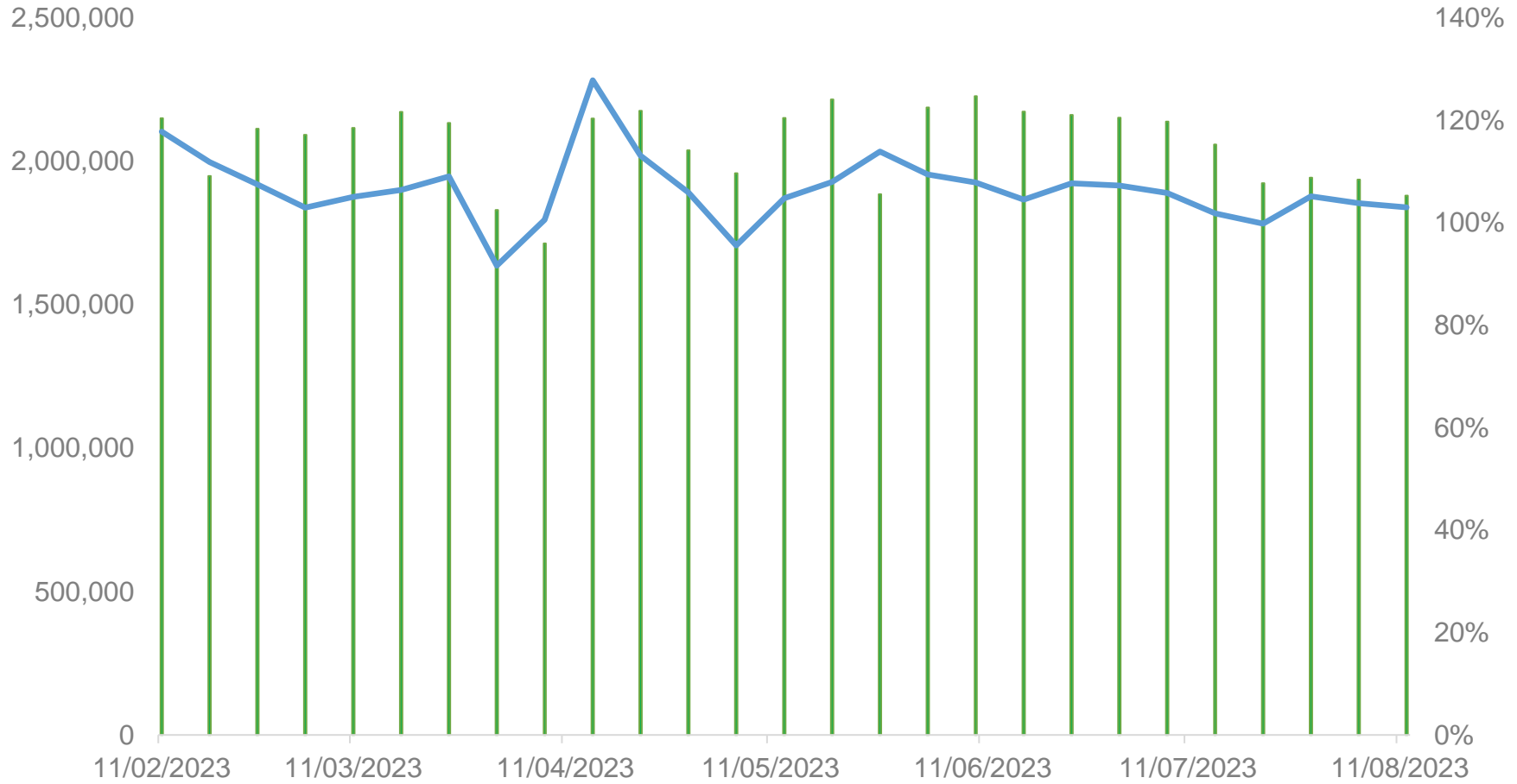


Source: TT2

Traffic through the Tyne Tunnel continues to be higher than budgeted.

# Sustainable transport - Bus

Estimated bus patronage and % of the equivalent period in the previous year



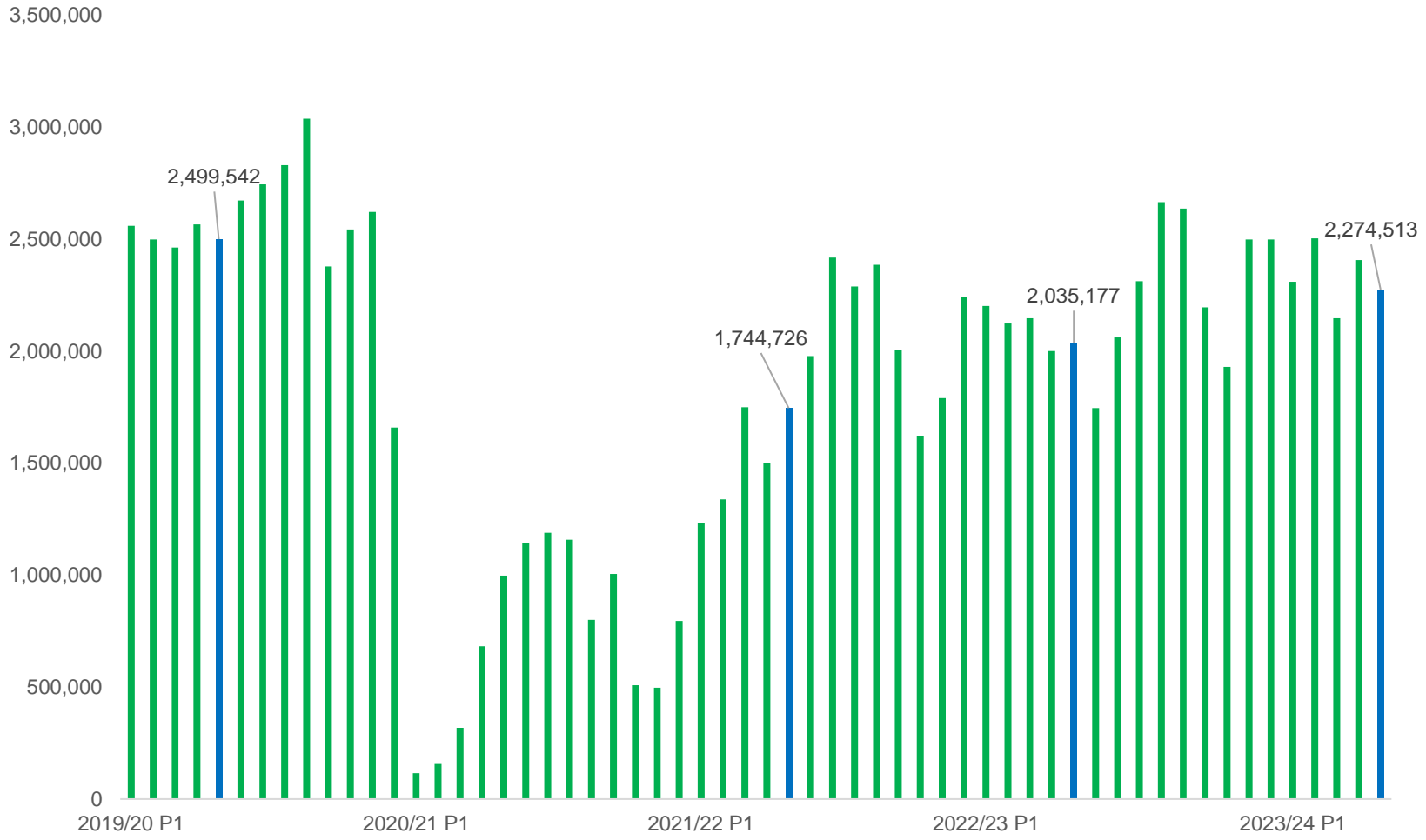
Average bus patronage for the first two weeks in August 2023 was **1.90m** passengers. Average weekly bus patronage in August 2022 was **1.83m**.

Source: Bus operators (Confederation of Passenger Transport)

Moving to a green, healthy, dynamic and thriving North East.

**Transport North East**

### Estimated Passenger Boardings

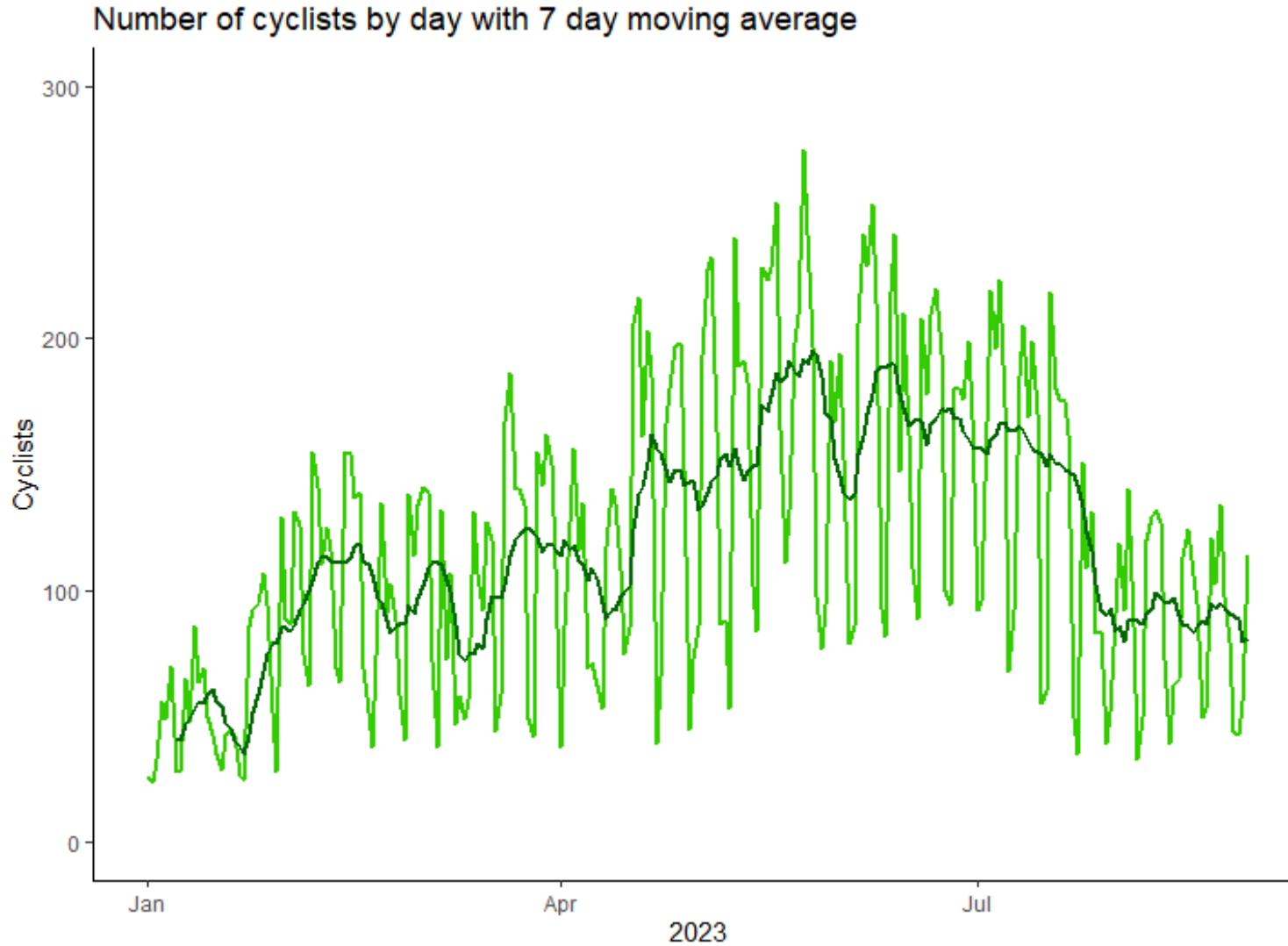


Estimated passenger numbers in the most recent period are above the same period in 2022, at **2,274,513**.

Passenger boardings in the equivalent period in 2019/20 were **2,035,177**.

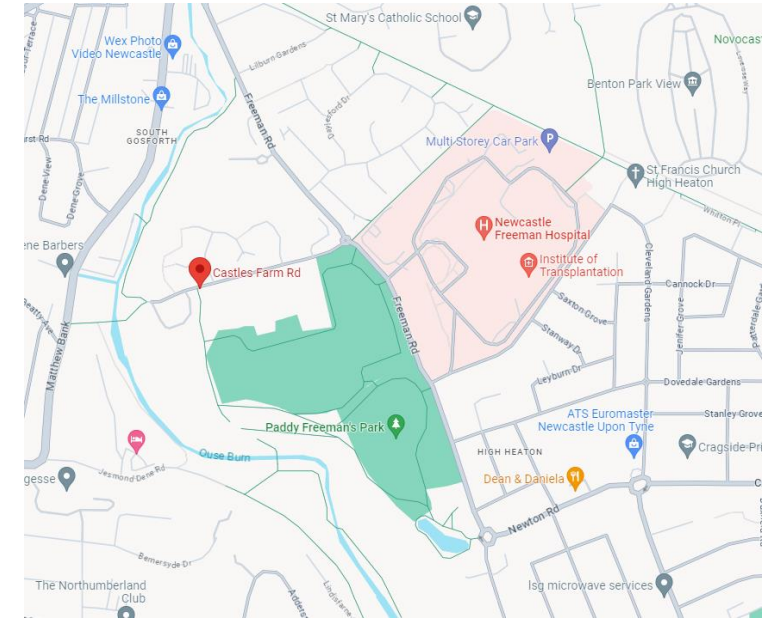
Source: Nexus

# Active Travel



The graph on this slide shows the volumes of cyclists at Castles Farm Road in Newcastle through 2023, the darker line is the 7 day moving average. We can see a steady increase in the first period of the year before a decline throughout July.

On an average day across this period, **119 cyclists passed this area**. The fewest cyclists passing this area was 24 and the most was 275.



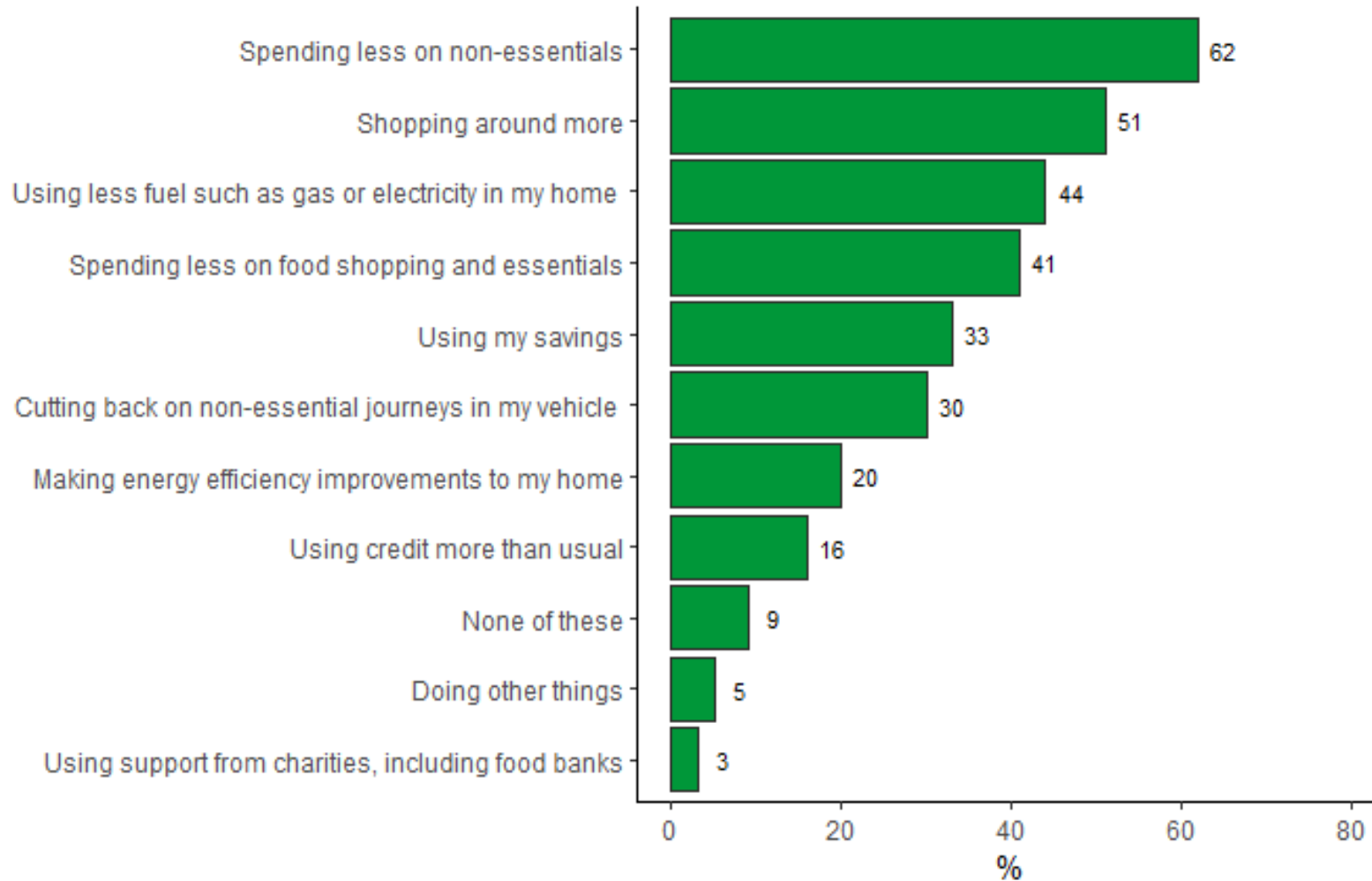
Source: Transport North East Counter Data, map from Google Maps

Moving to a green, healthy, dynamic and thriving North East.

**Transport North East**



# Cost of Living and Transport

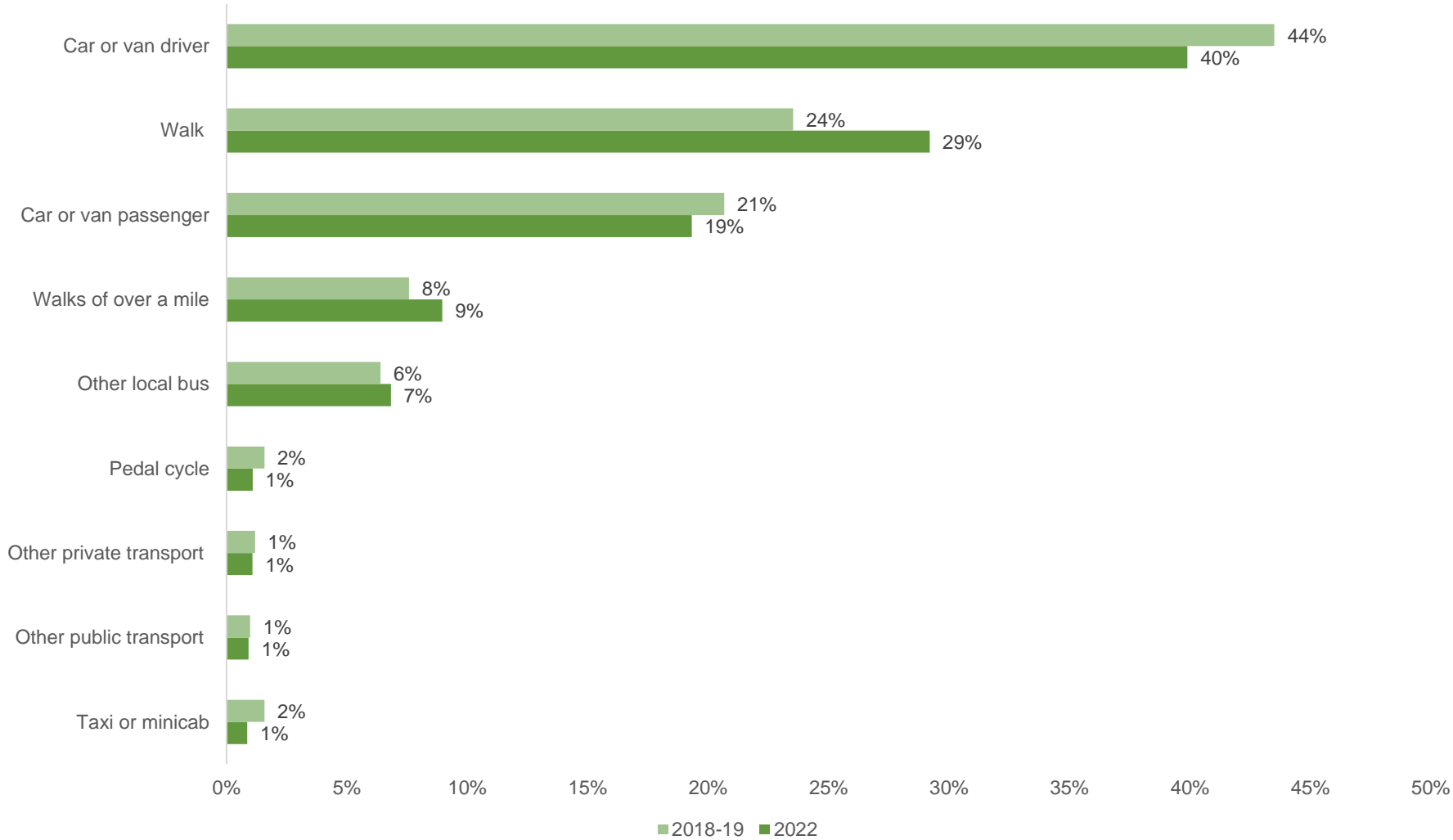


The cost of living feature this month focusses on the steps people are taking to cope with the cost of living crisis, focussing specifically on people's propensity to cut back on non-essential journeys. 30% of respondents in August reported cutting down on non-essential journeys in their vehicle. This was less frequent than someone using their savings (33%).

Source: Office for National Statistics [Cost of living insights - Office for National Statistics \(ons.gov.uk\)](https://ons.gov.uk/cost-of-living-insights)



### NTS 2018-19 and 2022 North East Modal Share



This month's spotlight feature is on regional modal share.

According to the National Travel Survey in 2022, 40% of trips in the North East were made by car or van driver, with a further 19% as a car or van passenger. Active travel accounts for **30%** of all regional trips. In 2022 the average citizen made around 1009 trips a year. For the whole LA7 population, this equates to just under 2bn movements. This is slightly down on 2018-19, but is significantly higher than 2021.

Since the COVID pandemic, we can see a reduction in car and an increase in active travel. Bus journeys have also increased.

Moving to a green, healthy, dynamic and thriving North East.

**Transport North East**