

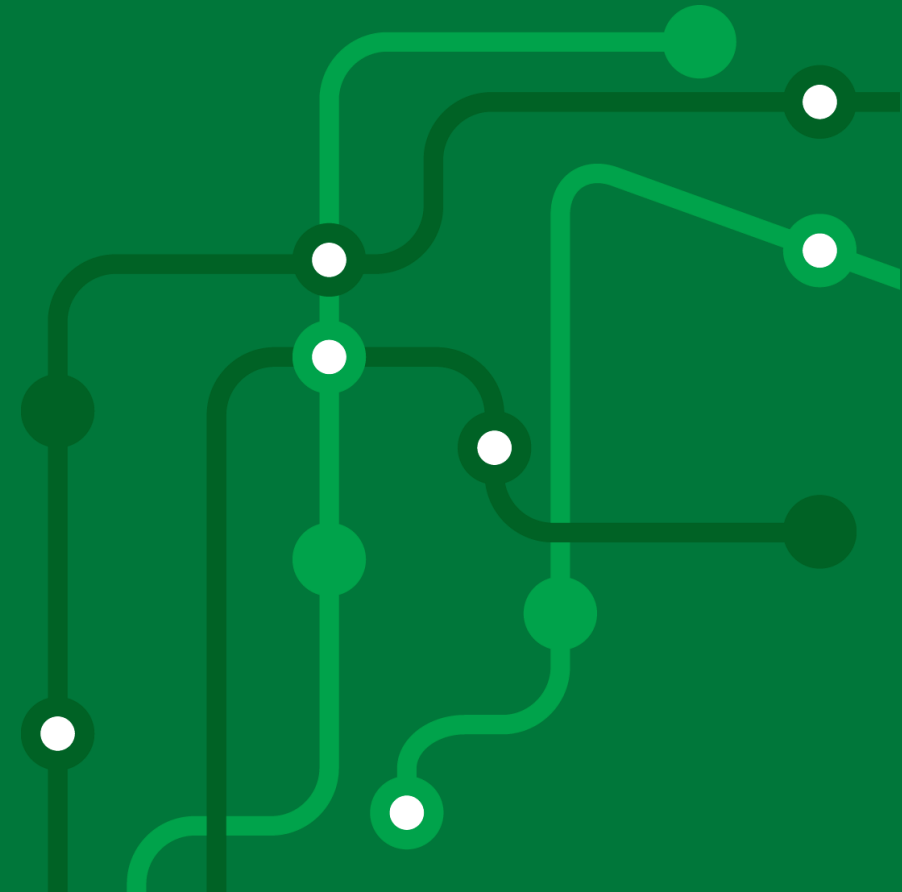
Transport **North East**

Transport Dashboard

Monthly update

11th August 2023

Moving to a green, healthy, dynamic and thriving North East.



Monthly highlights



Bus passenger numbers in July were estimated to be around **105%** of 2022 levels.



Metro passenger numbers in July were estimated to be **120%** of 2022 levels.



Overall, for the year to date traffic speeds have been very similar to 2022.

Source: [Microsoft Power BI](#) (Urban Traffic Management Centre)



Daily July pedestrian rates at the Town Moor in Newcastle were **10% down** on June volumes.

Source: Transport North East Counter Data



Average occupancy at the long stay Park and Ride site at Heworth Metro station has been **36%** during weekday peak hours so far this year.

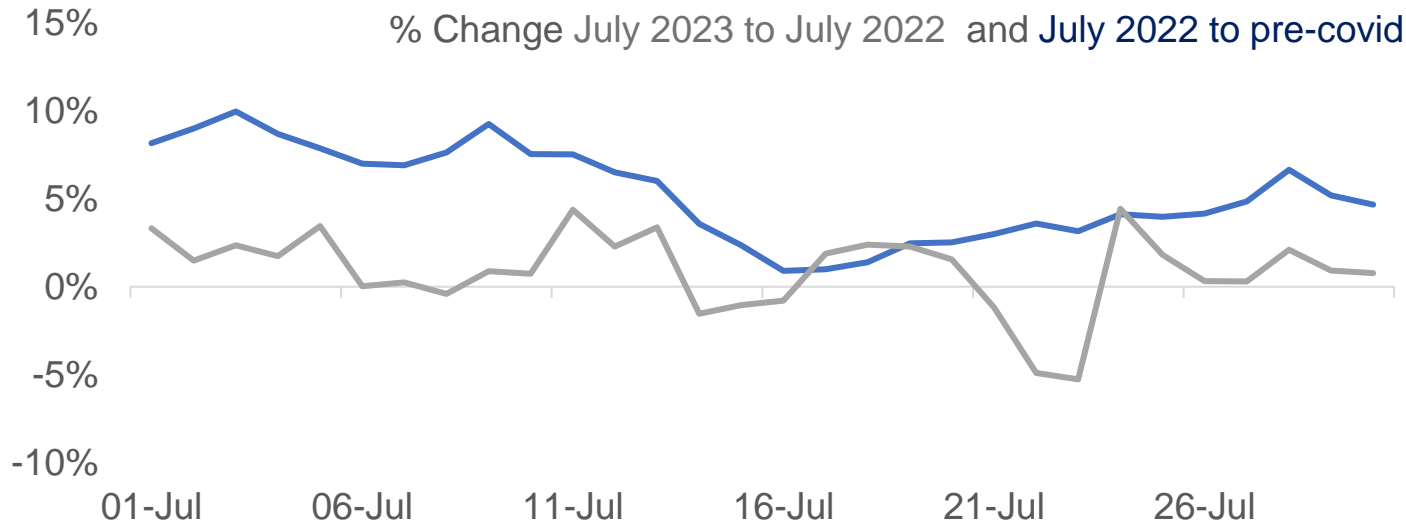
Source: [Microsoft Power BI](#) (Urban Traffic Management Centre)



At the time of the 2021 Census, 57% of people in our region commuted to work by car.

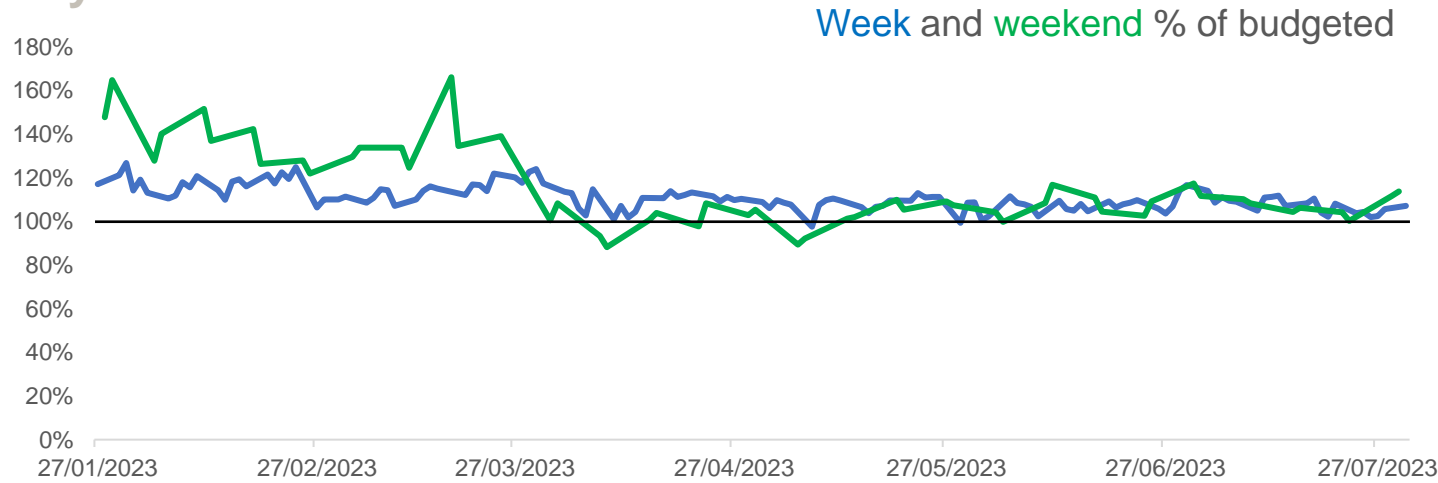
Road traffic

Tyne and Wear Traffic



Source: Tyne & Wear UTMC

Tyne Tunnel Traffic



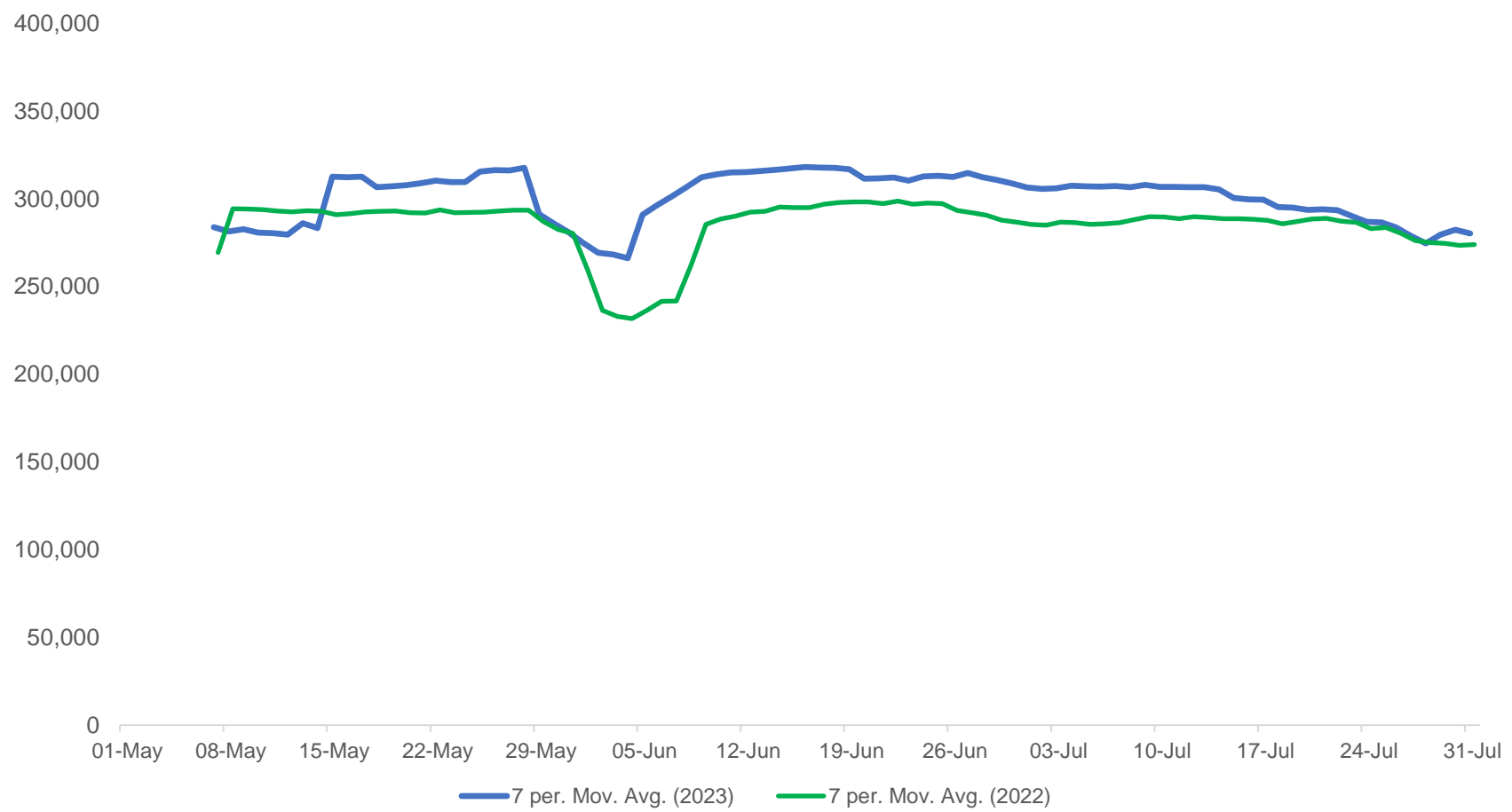
Source: TT2

Overall, through July 2023 traffic levels across Tyne and Wear were similar to July 2022 levels. July 2022 traffic levels were generally above pre-Covid levels.

Traffic through the Tyne Tunnel continues to be higher than budgeted, although recently levels are closer to budgeted than earlier in the year.

Sustainable transport - Bus

Weekly Average of Estimated Passenger Boardings May to July



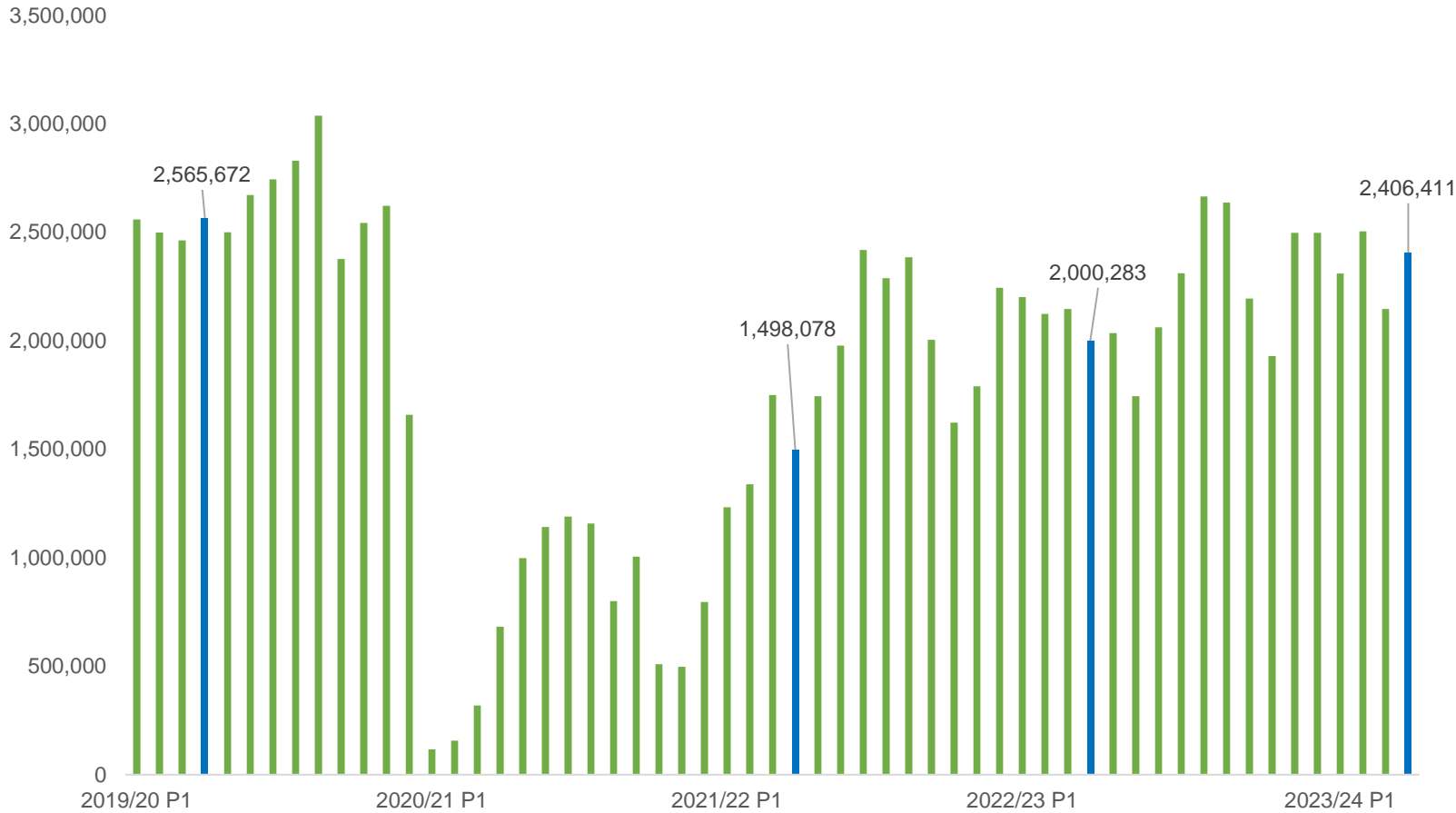
This graph compares a rolling 7 day average for bus passenger numbers from May to June in 2023 and 2022. Over the quarter the 2023 passenger numbers have generally been higher than 2022. In July 2023 there were **8,990,309** passengers, compared to 8,700,995 in July 2022.

Source: Bus operators (Confederation of Passenger Transport)

Moving to a green, healthy, dynamic and thriving North East.

Transport North East

Estimated Passenger Boardings by Period 2019-2023



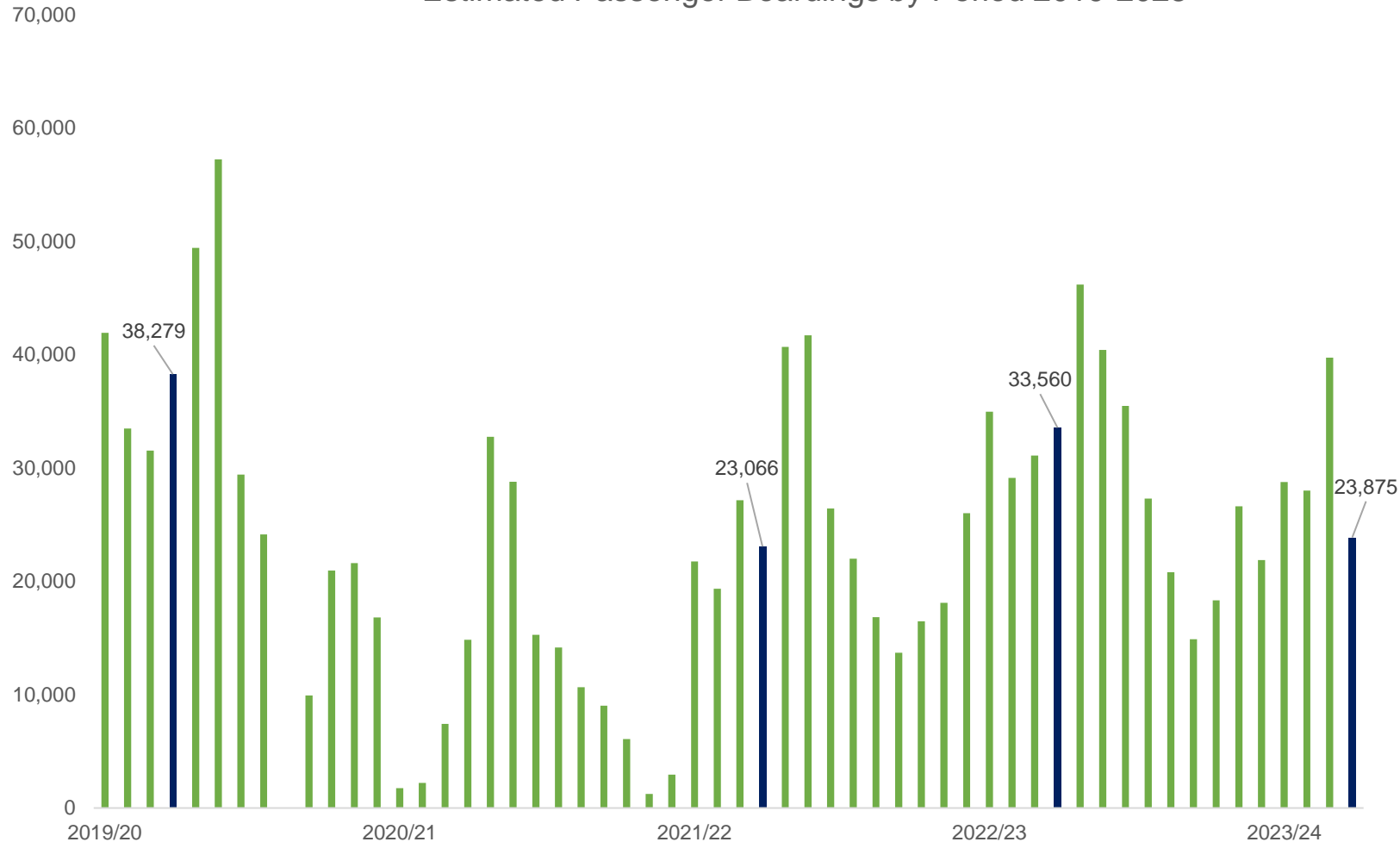
Estimated passenger numbers in the most recent period are above the same period in 2022, at **2,406,411**.

Passenger boardings in the equivalent period in 2019/20 were **2,565,672**.

Source: Nexus

Shields Ferry

Estimated Passenger Boardings by Period 2019-2023



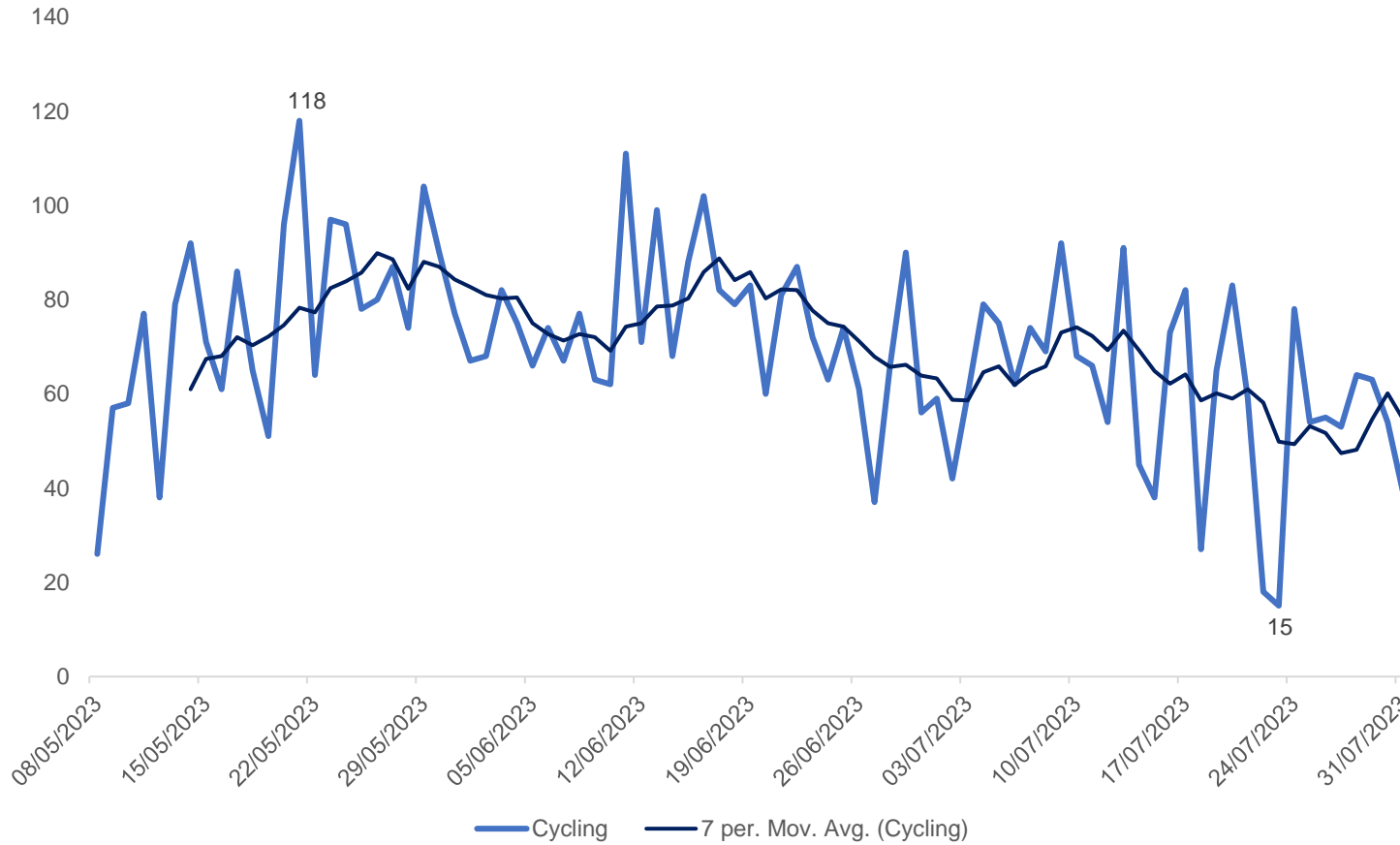
Estimated passenger numbers in the most recent period were below the same period in 2022, at **23,875**.

Passenger boardings in the equivalent period in 2021/22 were **23,066**.

Source: Nexus

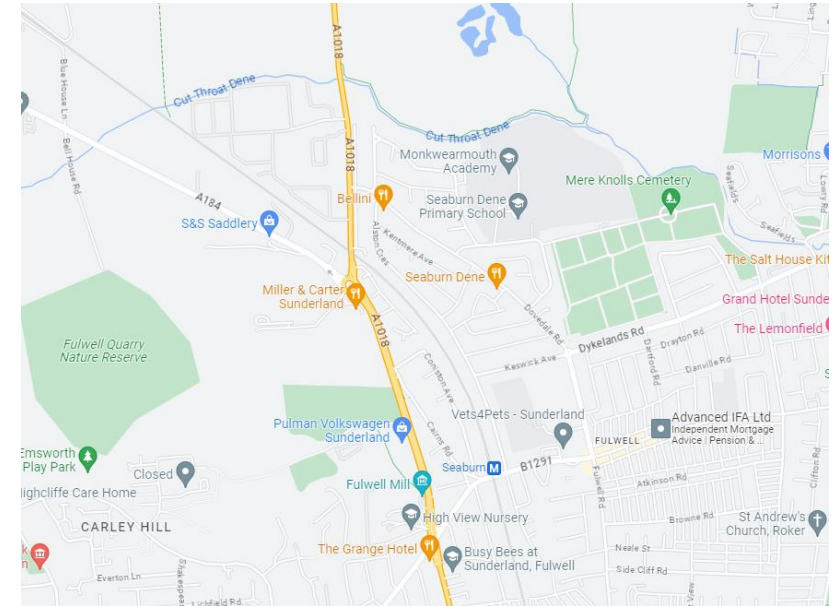
Active Travel

Number of Cyclists by day with 7 day Moving Average



The graph on this slide shows the volumes of cyclists at Sunderland Road/Newcastle Road in Sunderland.

On an average day across this period, **50 pedestrians and 69 cyclists** passed the area.



Source: Transport North East Counter Data, map from Google Maps

Moving to a green, healthy, dynamic and thriving North East.

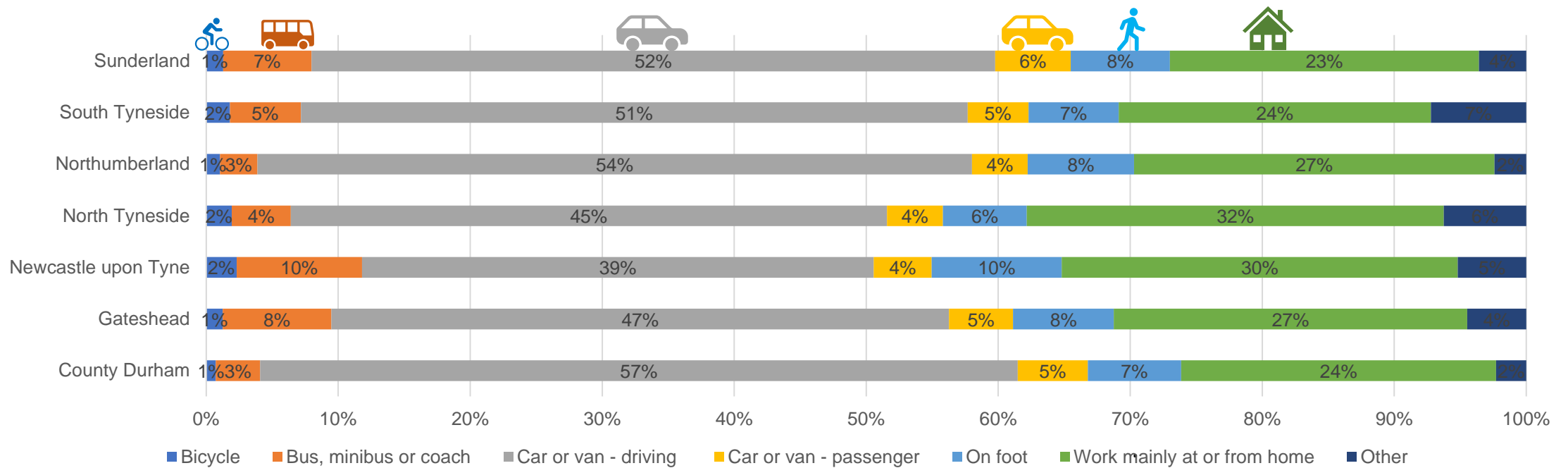
Transport North East

Travel to Work

This month's feature looks at the travel to work responses from the 2021 Census.

On the Census 2021 form, people who were in employment or temporarily away from work (including on furlough) in the week before Census Day were asked "How do you usually travel to work?". People were asked to select one mode of transport that they used for the longest part, by distance, of their usual journey to work. The Census ran during a time of Covid-19 restrictions, and guidance was given to respondents that if the pandemic had affected their journeys to answer based on their current circumstances, and if on furlough to answer based on how they would have travelled before furlough. It was a period of rapid change and there is uncertainty as to how people understood the travel to work question.

Car was the dominant method of travel to work, with Durham having the highest % of car based commuters at 57%. Metro journeys fall into the category of Underground, Metro, light rail and tram, and are in the other category below with the Census categories for taxi, train and other. The Metro network does not cover the full region, and so that category ranged between 0% in Durham and Northumberland, and 4% in South Tyneside.



Source: [Travel to work, England and Wales - Office for National Statistics \(ons.gov.uk\)](https://ons.gov.uk)

Moving to a green, healthy, dynamic and thriving North East.

Transport North East

Moving to a green, healthy, dynamic and thriving North East.

Transport North East