

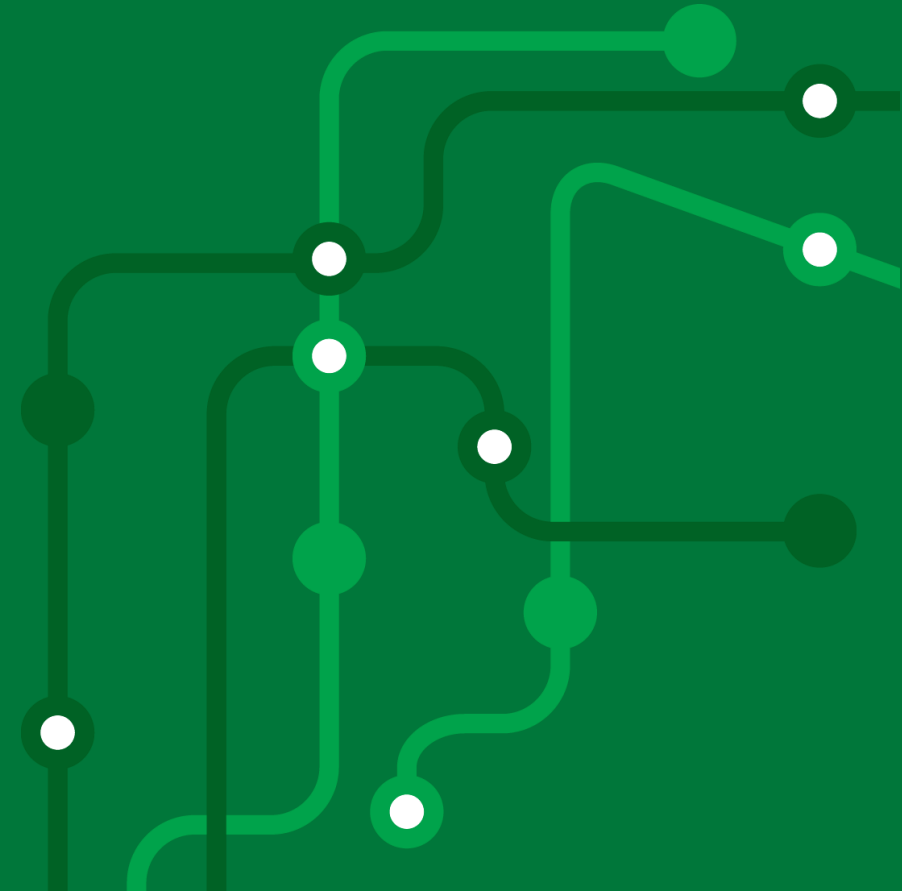
Transport **North East**

Transport Dashboard

Monthly update

10th May 2023

Moving to a green, healthy, dynamic and thriving North East.



Monthly highlights



Bus passenger numbers in April were estimated to be around **96%** of 2022 levels.



Metro passenger numbers in April were estimated to be around **105%** of 2022 levels.



Overall, weekday traffic speeds between 17:00-18:00 were slower in April compared to April 2022.

Source: [Microsoft Power BI](#) (Urban Traffic Management Centre)



Daily April cycling rates at the Millennium Bridge were around **26% up** on daily March rates.



Average occupancy at the long stay Park and Ride site in Heworth Metro was **34%** during weekday peak hours over April.

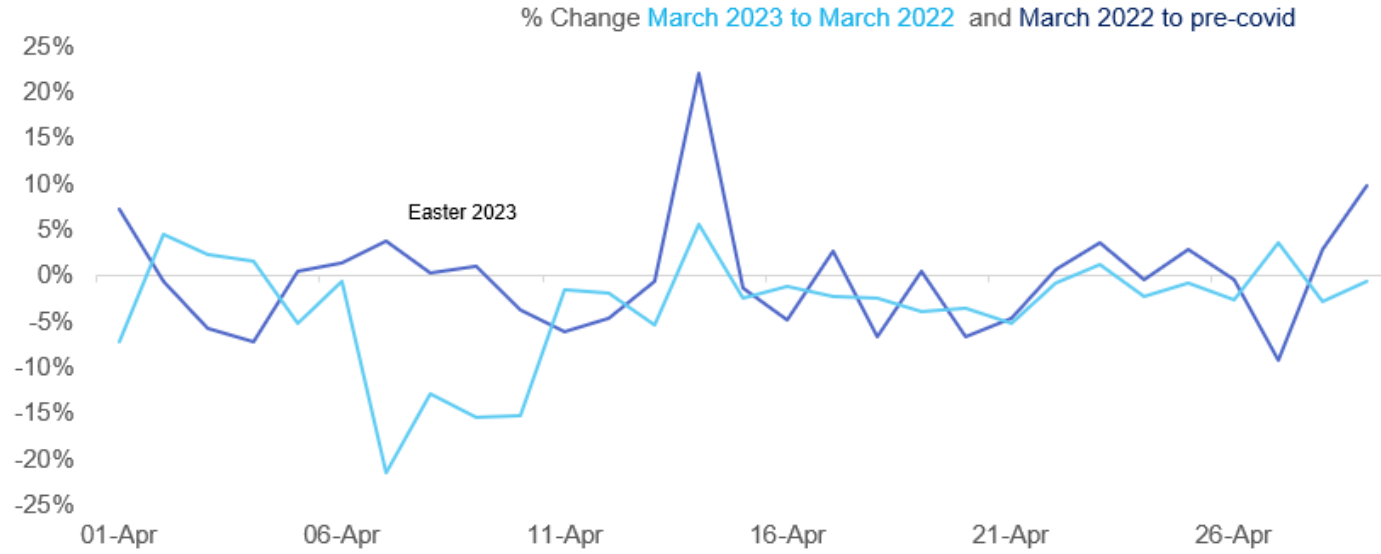
Source: [Microsoft Power BI](#) (Urban Traffic Management Centre)



According to the North East Travel Survey 2023, **30%** of respondents are most likely to use car or van as a driver to travel for leisure, with **26%** travelling by bus.

Road traffic

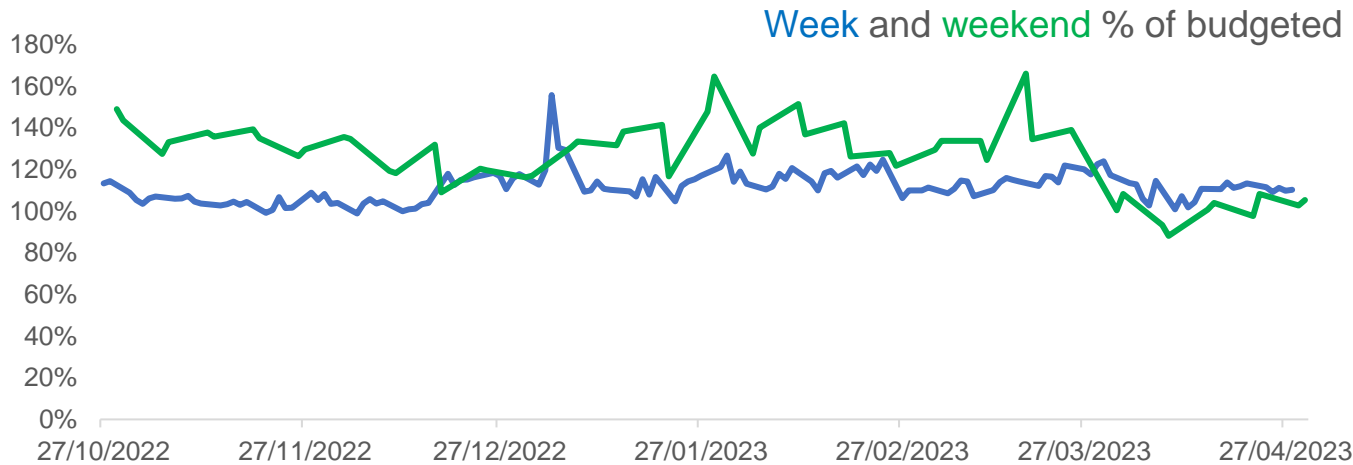
Tyne and Wear Traffic



Source: Tyne & Wear UTMC

Through April 2023 traffic levels across Tyne and Wear were generally slightly below April 2022 levels. March 2022 traffic levels were generally slightly below pre-Covid levels.

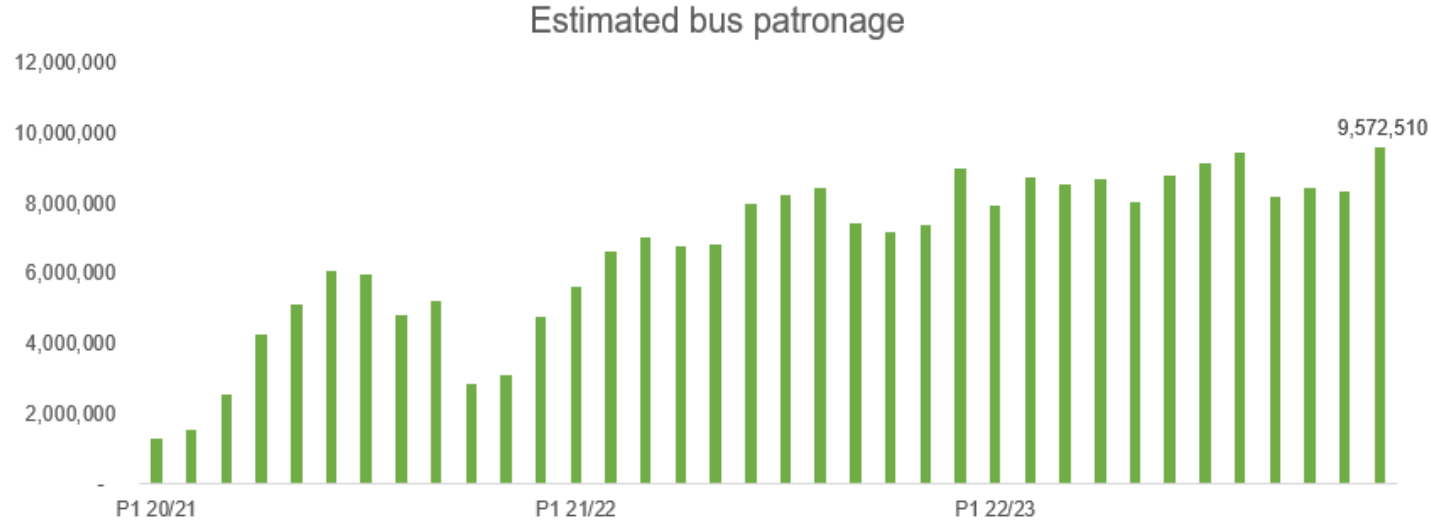
Tyne Tunnel Traffic



Source: TT2

Traffic through the Tyne Tunnel continues to be higher than budgeted, particularly at the weekend.

Local bus

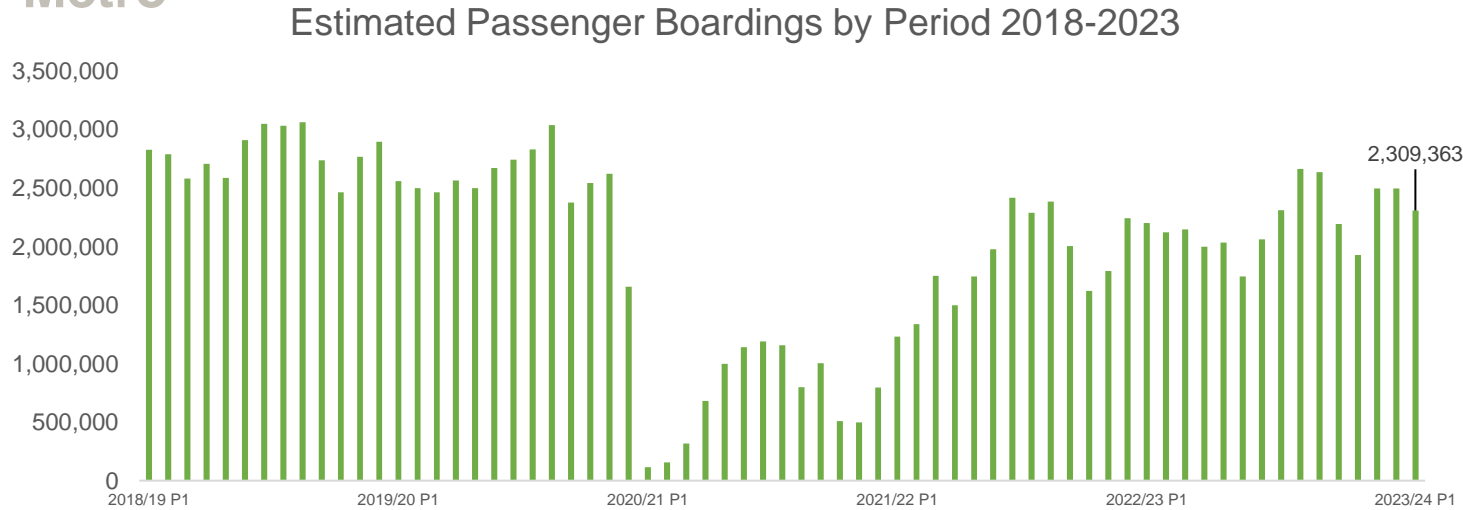


Source: Bus operators (Confederation of Passenger Transport)

Patronage for buses has started to dip when compared to the equivalent period in 2022. The end of February 2022 saw the lifting of Covid-19 restrictions, which may have had an impact.

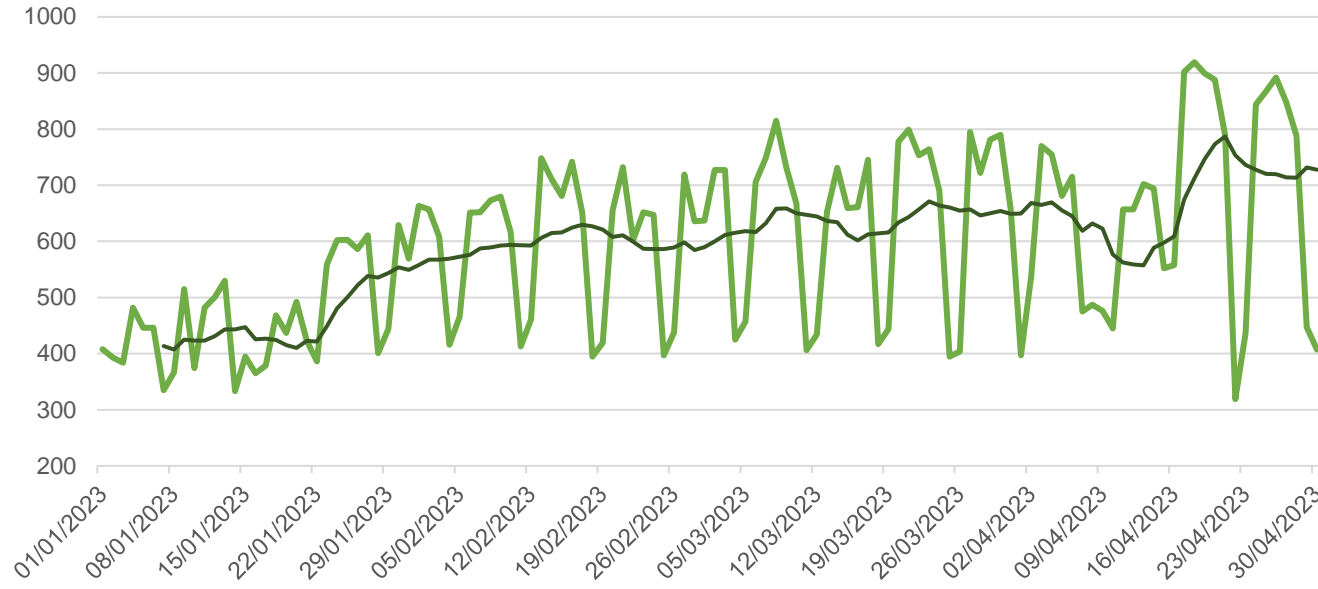
Metro passenger levels reflect major line closures such as the Metro Flow line closure starting in September and continuing into December. National Rail strikes have also caused partial line closures.

Metro

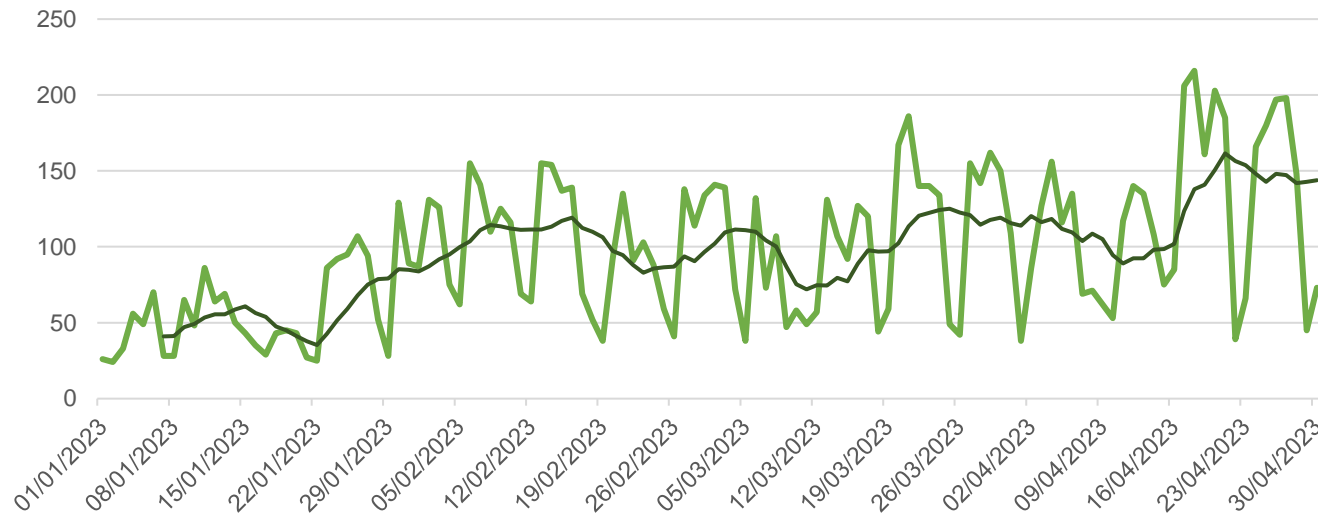


Source: Nexus

Active Travel



— Pedestrian — 7 per. Mov. Avg. (Pedestrian)



— Pedal Cycle — 7 per. Mov. Avg. (Pedal Cycle)

The graphs on this slide show the daily and 7 day rolling average of cyclists and pedestrians crossing the Castle Farm Road Bridge in 2023.

On an average day across this period, **592 pedestrians and 97 cyclists** crossed the bridge.

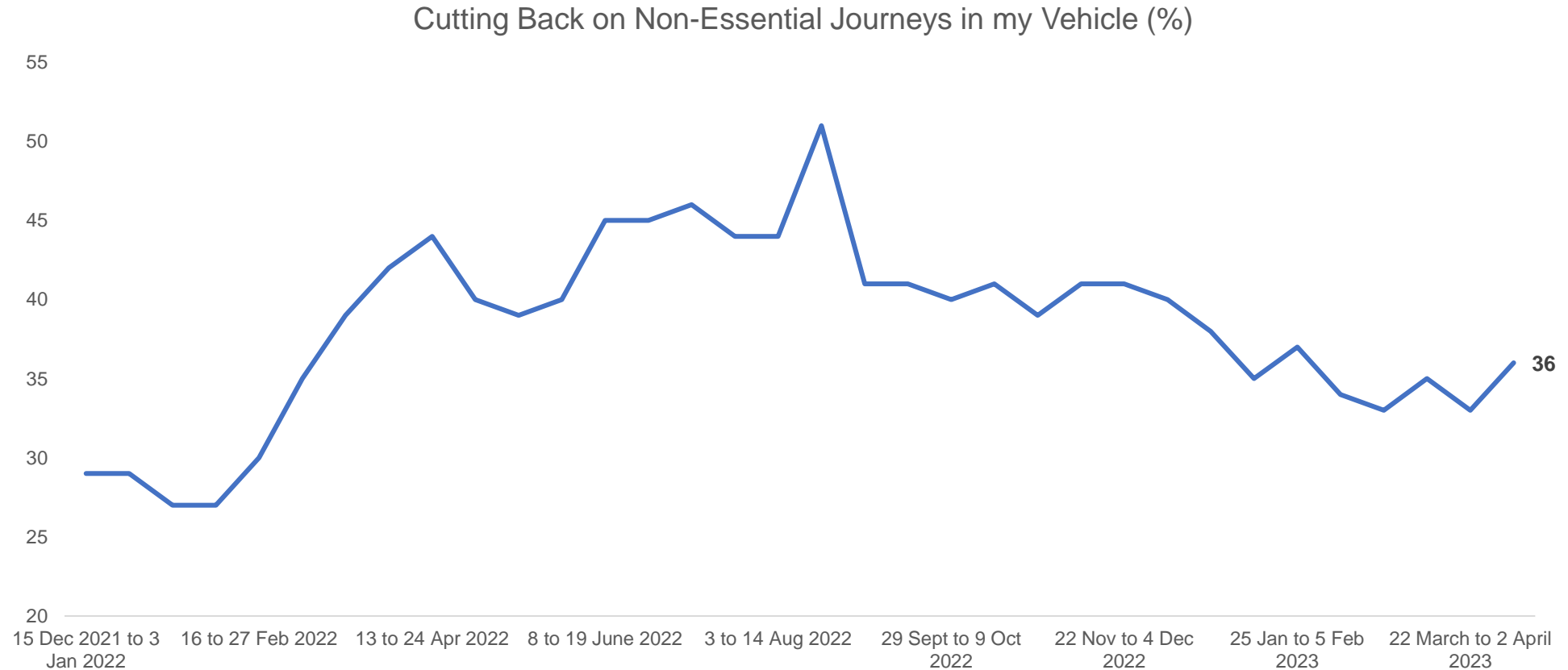
We can see that for both modes, there is a general increase in volume throughout the year, and the date for the highest volumes for both modes was the same- April 18th.

Source: Transport North East Counter Data

Moving to a green, healthy, dynamic and thriving North East.

Transport North East

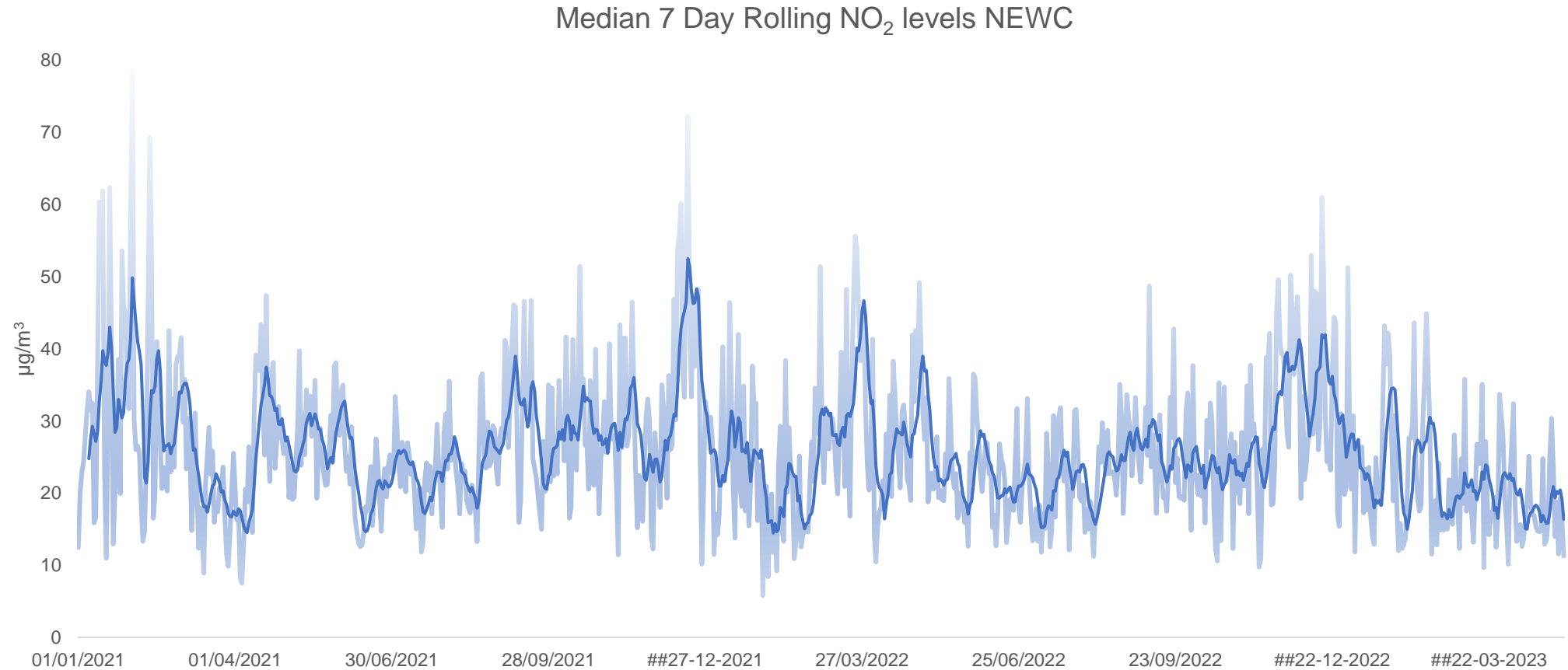
The cost of living feature this month focusses on the steps people are taking to cope with the cost of living crisis, focussing specifically on people's propensity to cut back on non-essential journeys. We can see that while fewer people are reporting cutting back on non-essential journeys from a peak of 51% in August 2022, that **36% of respondents are still cutting back on these journeys.**



Source: Office for National Statistics [Cost of living insights - Office for National Statistics \(ons.gov.uk\)](https://ons.gov.uk/cost-of-living-insights)

Air Quality

This graph shows the median Nitrogen Dioxide levels at a monitoring site in central Newcastle from January 2021 to May 2023. The darker line overlaid is the 7 day rolling average of these values. Median values have been chosen due to the relative volatility of air quality measurements. We can see some seasonal patterns in NO₂ levels, with the values over the last quarter **around 2022** levels, but these are **down on 2021** levels.



Source: DEFRA ## Refers to data that may be subject to review

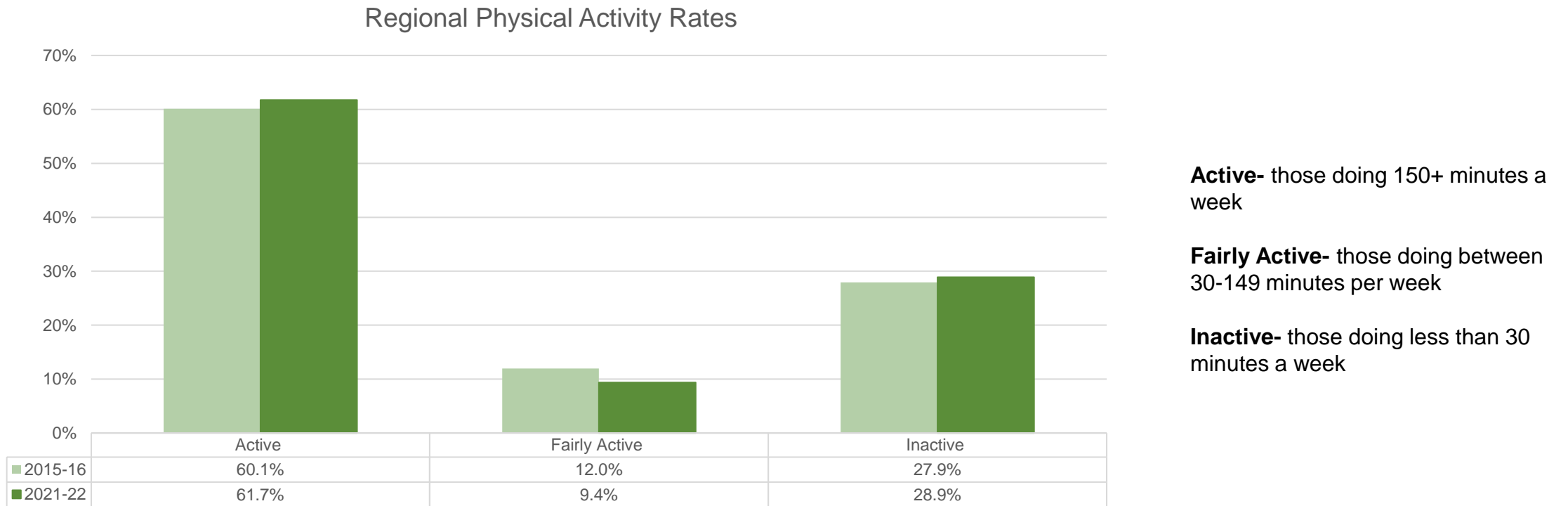
Moving to a green, healthy, dynamic and thriving North East.

Transport North East

Physical Activity Rates

This month's feature looks at regional physical activity rates. We can see that compared to the baseline year in 2015-16, in 2021-2022 physical **activity rates for those who are either active or inactive increased**, whereas rates of those who are fairly active decreased.

Active travel is included as an activity in this survey, with national rates **decreasing from 36% in 2015-16 to 33% in 2021-22**. However, **the 2021-22 figure was over 6% up** on the 2020-21 figure.



Source: Sport England Active Lives Survey Nov 2021-22 [Active Lives | Sport England](#)

Moving to a green, healthy, dynamic and thriving North East.

Transport North East