

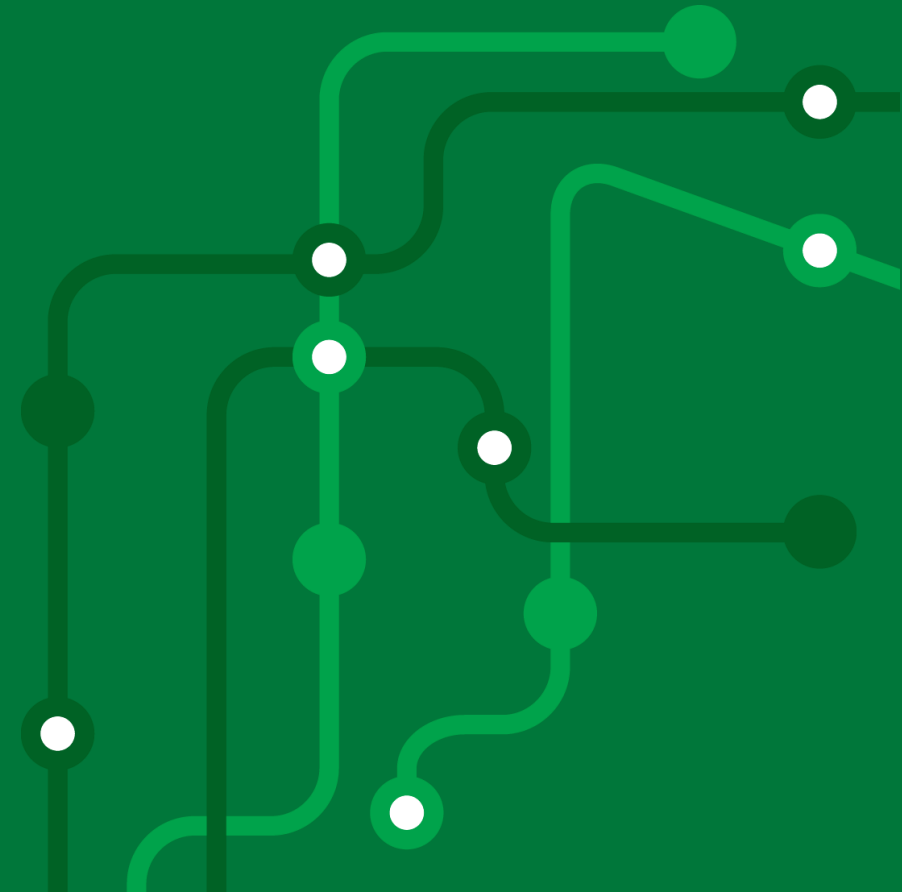
Transport **North East**

Transport Dashboard

Monthly update

13th April 2023

Moving to a green, healthy, dynamic and thriving North East.



Quarterly highlights



Bus passenger numbers in March were estimated to be around **82%** of pre-Covid levels, compared to **83%** in February.



Metro passenger numbers in March were estimated to be around **100%** of 2019/20 levels, compared to **96%** in February.



Overall, traffic speeds were very similar in this quarter compared to the first quarter of 2022.

Source: [Microsoft Power BI](#) (Urban Traffic Management Centre)



Daily March cycling rates at the Millennium Bridge were around **8% down** on daily February rates.



Average occupancy at the long stay Park and Ride site in Heworth Metro was 39% during weekday peak hours over the quarter.

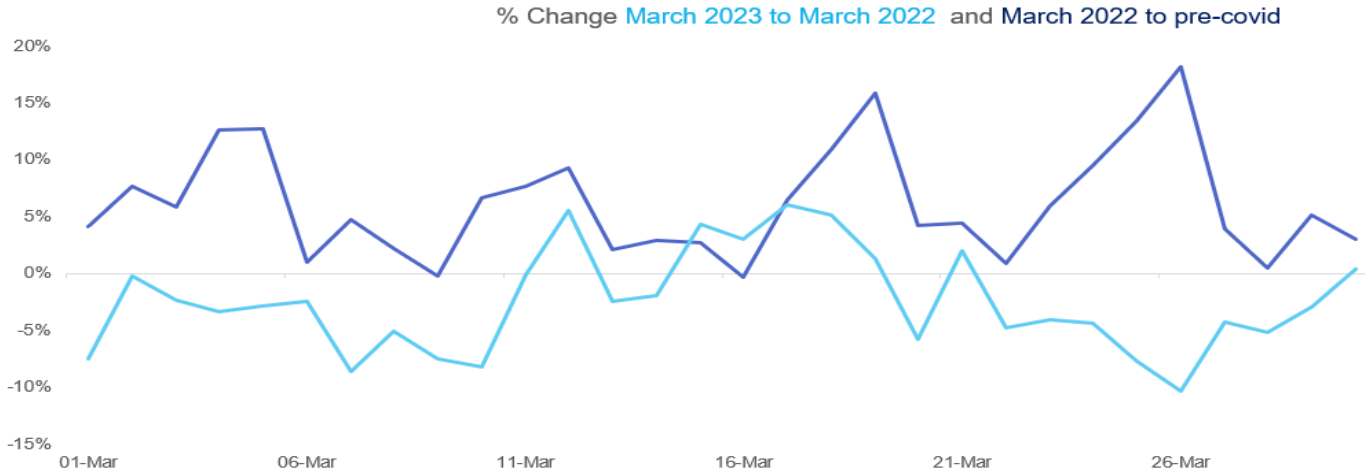
Source: [Microsoft Power BI](#) (Urban Traffic Management Centre)



According to the North East Travel Survey 2022, people within Northumberland and South Tyneside were least likely to stay in area for their work commute.

Road traffic

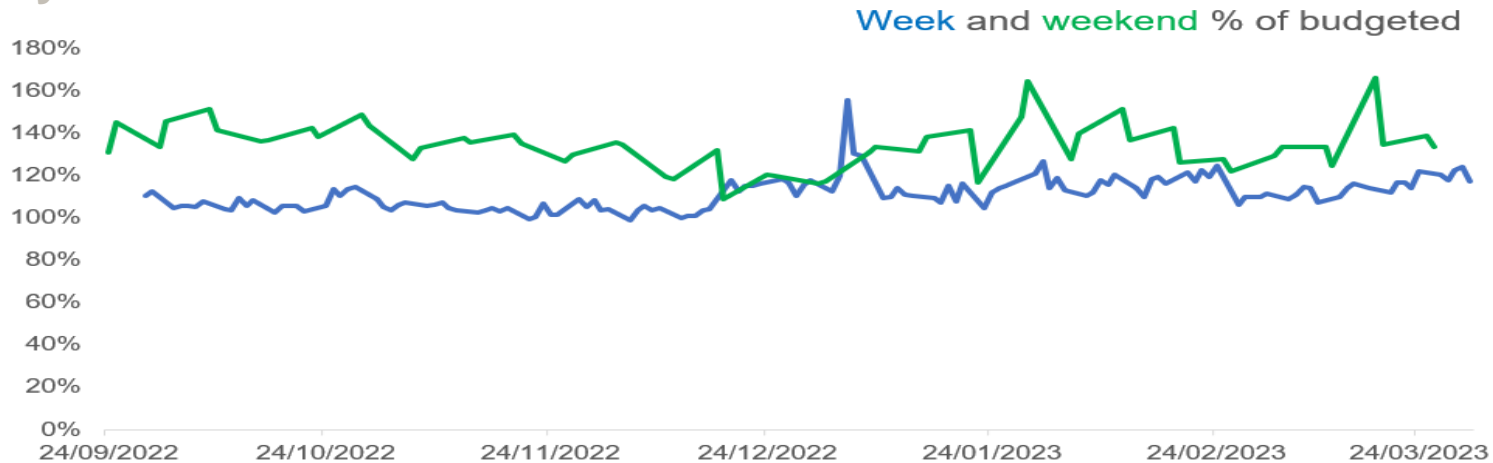
Tyne and Wear Traffic



Source: Tyne & Wear UTMC.

Through March 2023 traffic levels across Tyne and Wear were generally below March 2022 levels. March 2022 traffic levels were generally above pre-Covid levels.

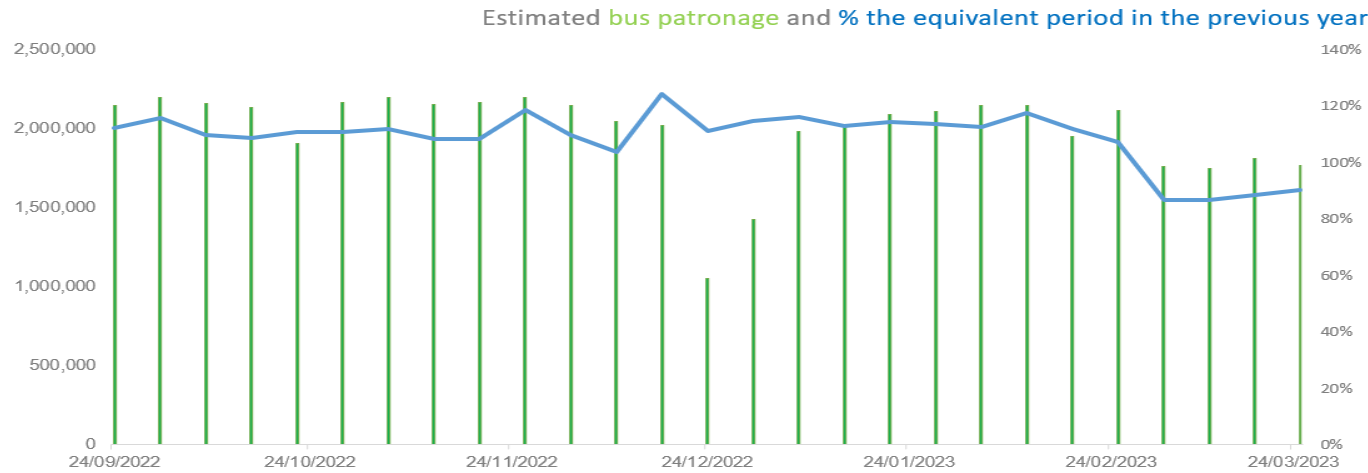
Tyne Tunnel Traffic



Source: TT2

Traffic through the Tyne Tunnel continues to be higher than budgeted, particularly at the weekend.

Local bus



Source: Bus operators (Confederation of Passenger Transport)

Patronage for buses has started to dip when compared to the equivalent period in 2022. The end of February 2022 saw the lifting of Covid-19 restrictions, which may have had an impact.

Metro

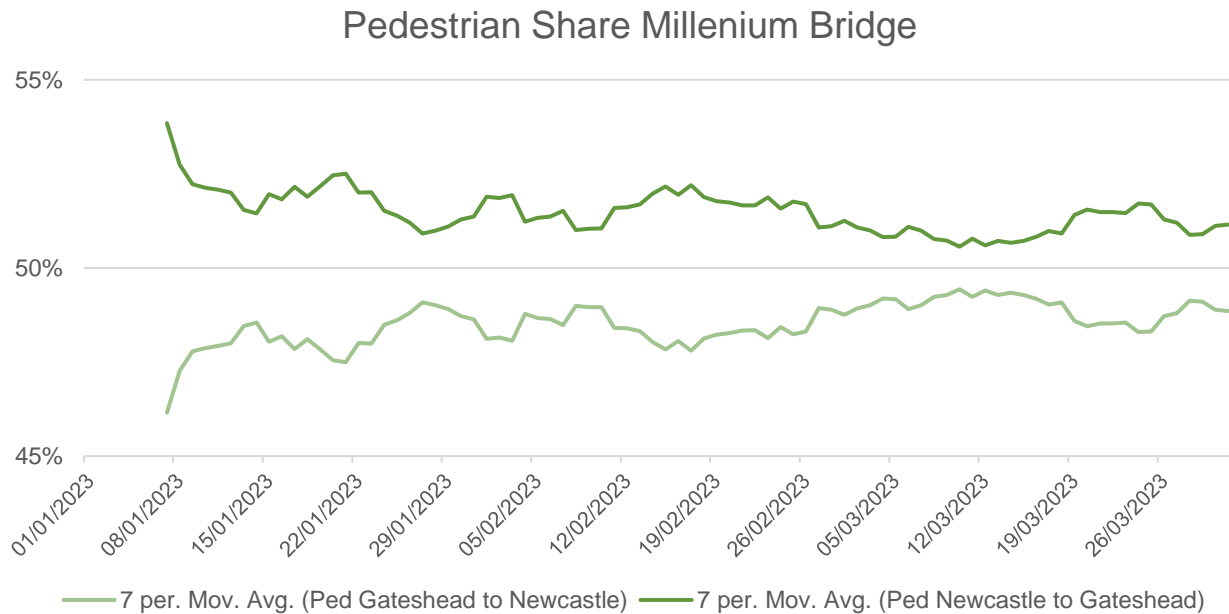
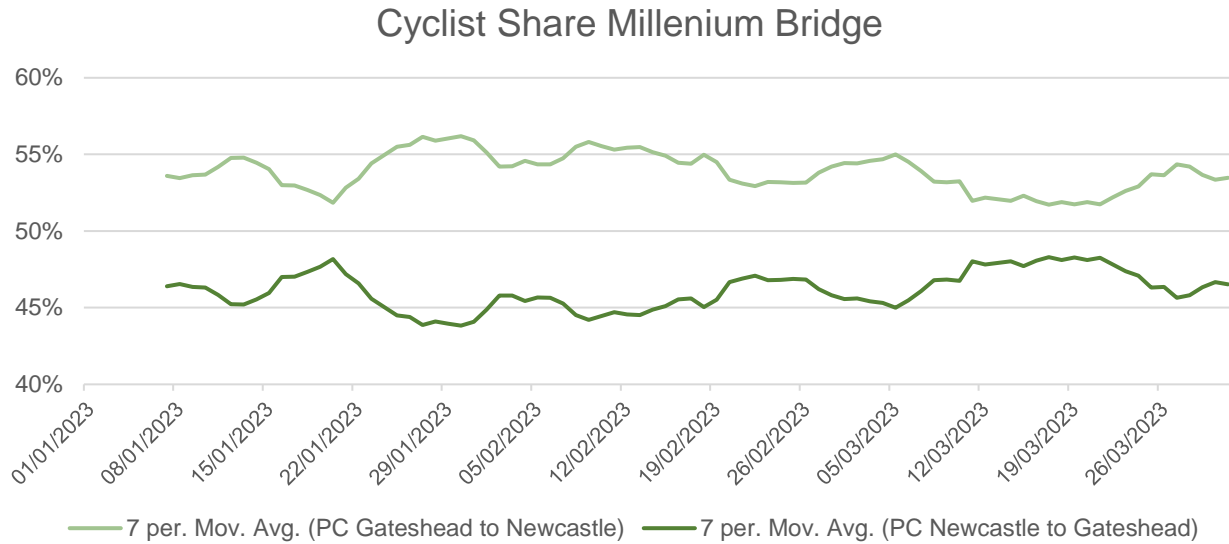


Metro passenger levels reflect major line closures such as the Metro Flow line closure starting in September and continuing into December. National Rail strikes have also caused partial line closures.

Weekly comparisons are skewed due to events and Christmas falling on a different day type compared to other years.

Source: Nexus

Active Travel



The graphs on this slide show the 7 day rolling average percentage share of cyclists and pedestrians crossing the Gateshead Millennium Bridge by direction.

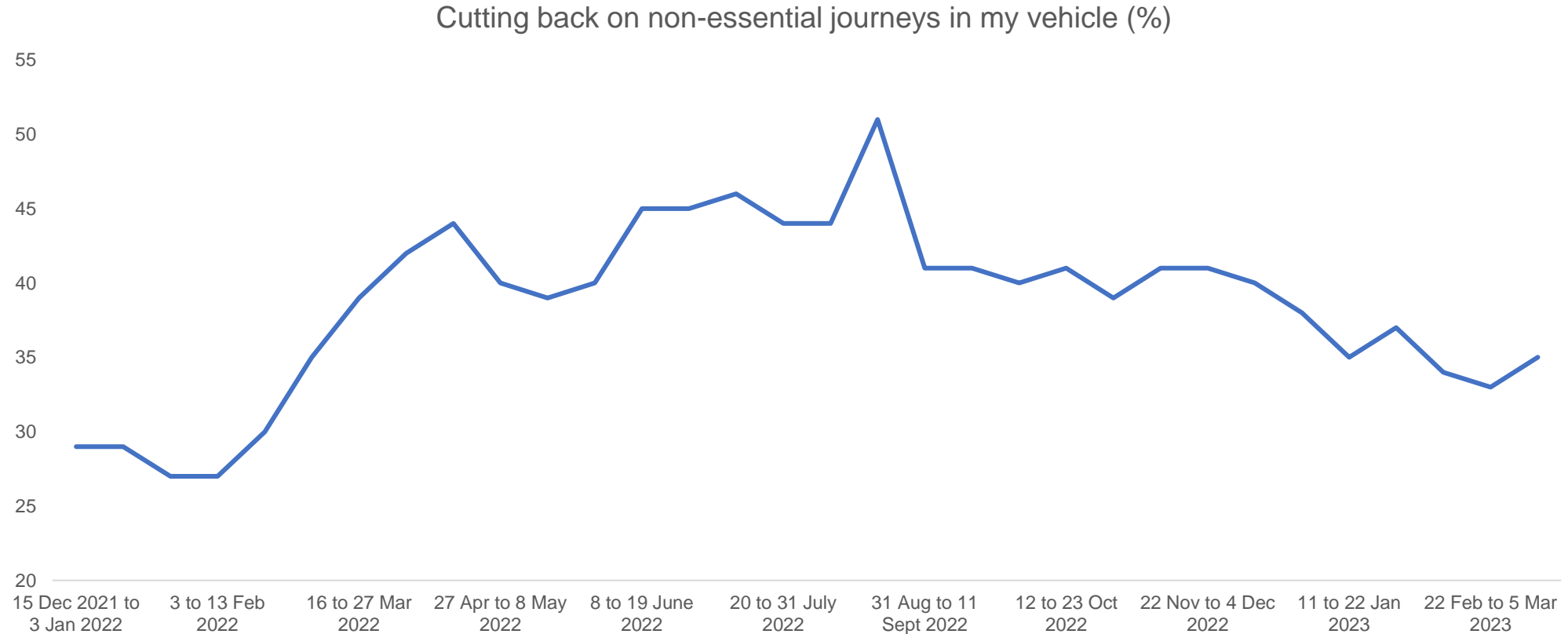
We can see that the Gateshead-Newcastle route had a higher share of cyclists consistently since the start of the year, with the inverse for pedestrian movements.

On an average day across this period, 2341 pedestrians and 233 cyclists crossed the bridge.

Source: Transport North East Counter Data

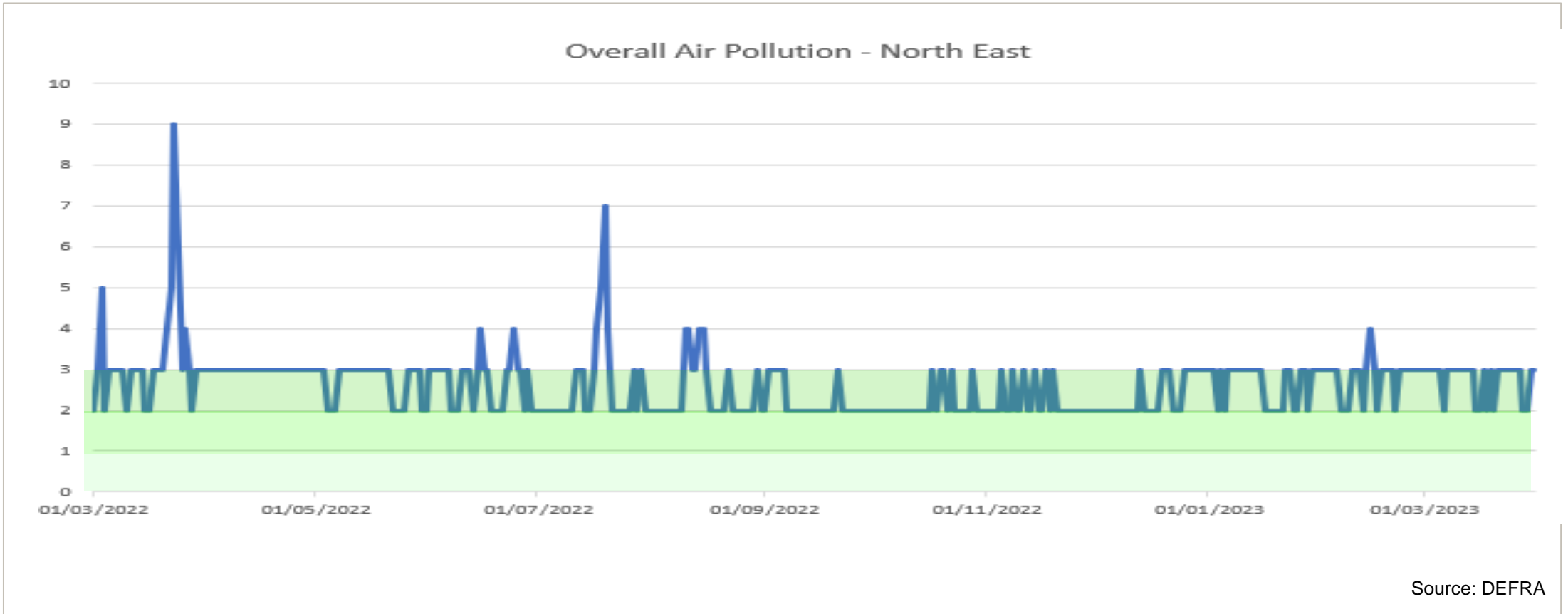
Cost of Living and Transport

The cost of living feature this month focusses on the steps people are taking to cope with the cost of living crisis, focussing specifically on people's propensity to cut back on non-essential journeys. We can see that while fewer people are reporting cutting back on non-essential journeys from a peak of 51% in August 2022, that 35% of respondents are still cutting back on these journeys.



Source: Office for National Statistics [Cost of living insights - Office for National Statistics \(ons.gov.uk\)](https://ons.gov.uk/cost-of-living-insights)

Air Quality



The overall air pollution index for a site or region is determined by the highest concentration of five pollutants



Low

Moderate

High

Very High

Moving to a green, healthy, dynamic and thriving North East.

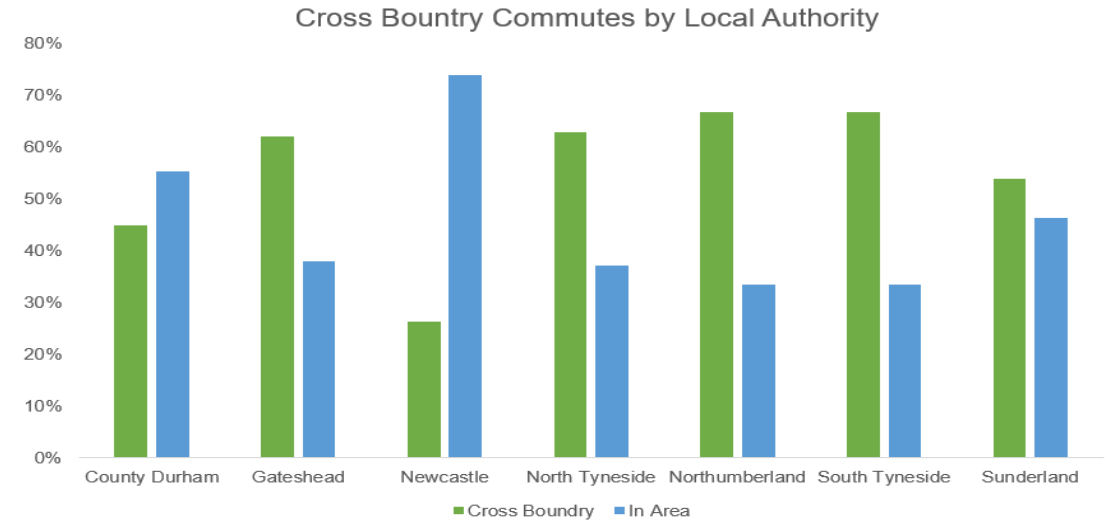
Transport North East

Cross boundary commutes

For respondents to the North East Travel Survey in 2022, the respondents from **Newcastle were the most likely to stay within their area** for their work commute, with **74%** of respondents classifying their home local authority and their commute destination as Newcastle.

The areas least likely to stay in area for their commute were **Northumberland and South Tyneside**, with **33%** of survey respondents identifying their commute destination as the same as their home area.

The matrix below shows the percentage of commuters by their most likely destination as a percentage of overall regional commutes. It has been weighted by Local Authority population to give a more accurate picture of commuting behaviours. For Northumberland, North Tyneside and Gateshead, commuting into Newcastle is more prevalent than in area commuting.



Weighted by LA Population		Likely commuting destination						
		County Durham	Gateshead	Newcastle	North Tyneside	Northumberland	South Tyneside	Sunderland
Which local authority do you live in?	County Durham	13.8%	1.9%	6.4%	0.8%	0.1%	0.5%	1.5%
	Gateshead	0.4%	4.0%	4.4%	0.6%	0.2%	0.3%	0.6%
	Newcastle	0.5%	1.0%	12.3%	1.3%	0.6%	0.3%	0.7%
	North Tyneside	0.2%	0.3%	5.3%	3.8%	0.4%	0.2%	0.1%
	Northumberland	0.2%	1.1%	6.9%	1.8%	5.2%	0.2%	0.2%
	South Tyneside	0.2%	0.6%	3.0%	0.4%	0.1%	2.6%	0.8%
	Sunderland	0.8%	0.9%	4.7%	0.4%	0.2%	0.5%	6.6%

Moving to a green, healthy, dynamic and thriving North East.

Transport North East