

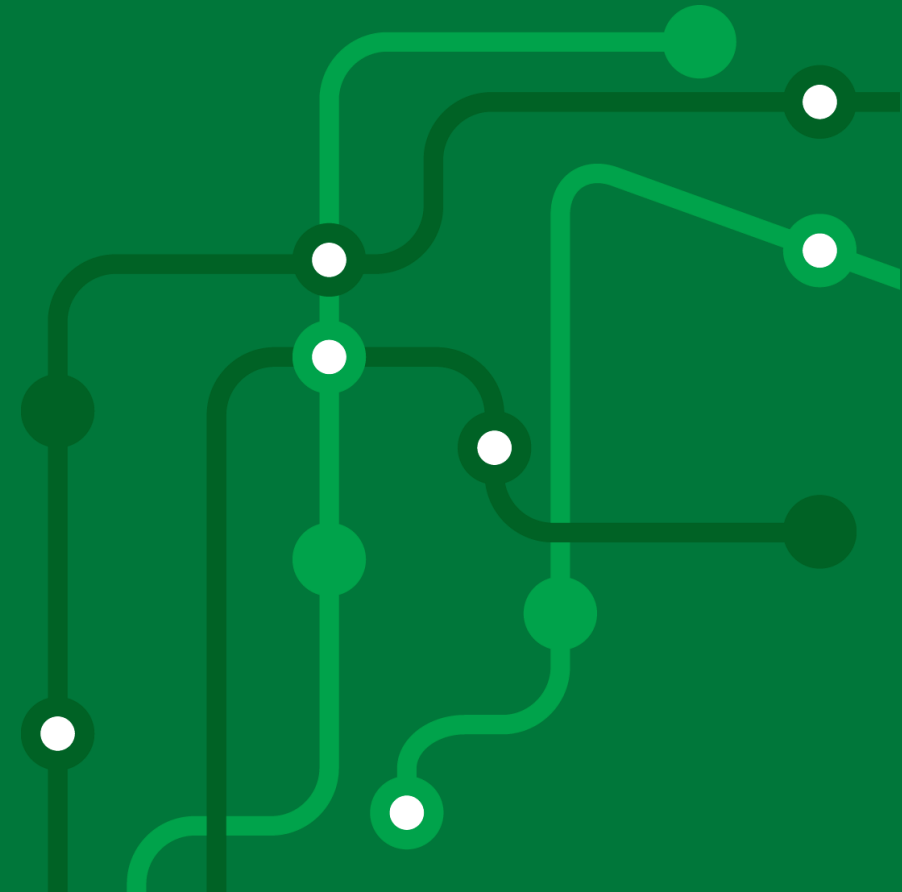
Transport **North East**

Transport Dashboard

Monthly update

7th March 2023

Moving to a green, healthy, dynamic and thriving North East.



Monthly highlights



Bus passenger numbers in February were estimated to be around **83%** of pre-Covid levels, compared to **77%** in January.



Metro passenger numbers in February were estimated to be around **96%** of 2019/20 levels, compared to **84%** in January.



Average speeds on the B1318 Great North Road were higher in February than in February 2022 on both weekdays and weekends.



Daily February cycling rates at the Millennium Bridge were around **23% up** on daily January rates.



Between April 2021-March 2022, the North East recorded the highest percentage of any region for rail journeys made compared with two years ago (82%).

Source: [Regional rail usage: April 2021 to March 2022 - GOV.UK](https://www.gov.uk/government/statistics/regional-rail-usage-april-2021-to-march-2022)
(www.gov.uk)

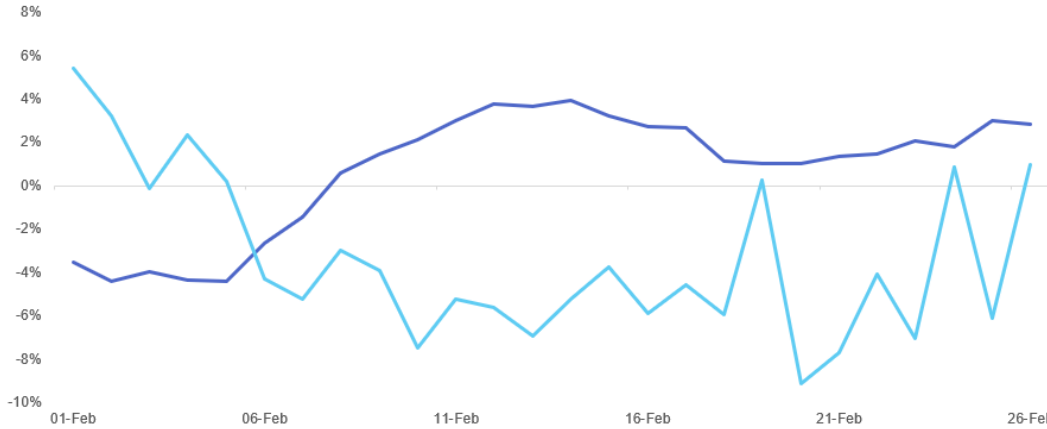


Bus punctuality at all timing points for the three largest operators in the region was **83%** in the latest period. Staffing issues can negatively affect punctuality figures.

Road traffic

Tyne and Wear Traffic

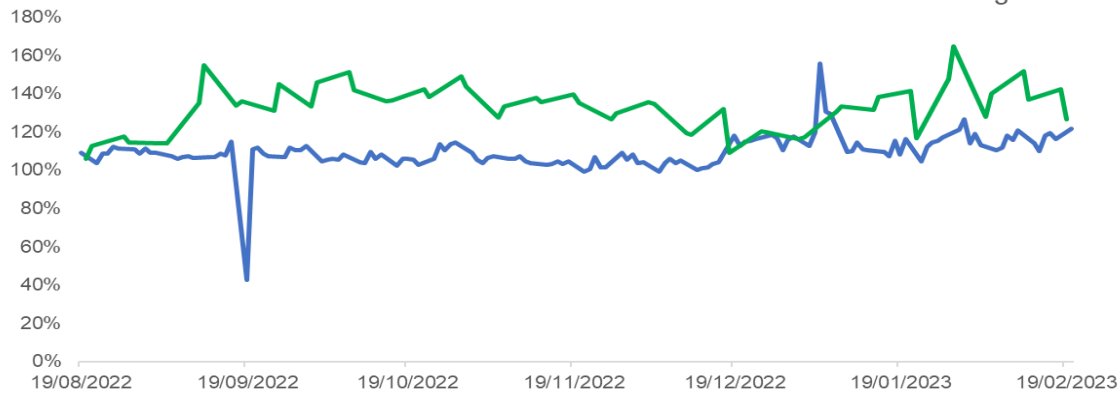
% Change February 2023 to February 2022 and February 2022 to pre-covid



Source: Tyne & Wear UTMC.

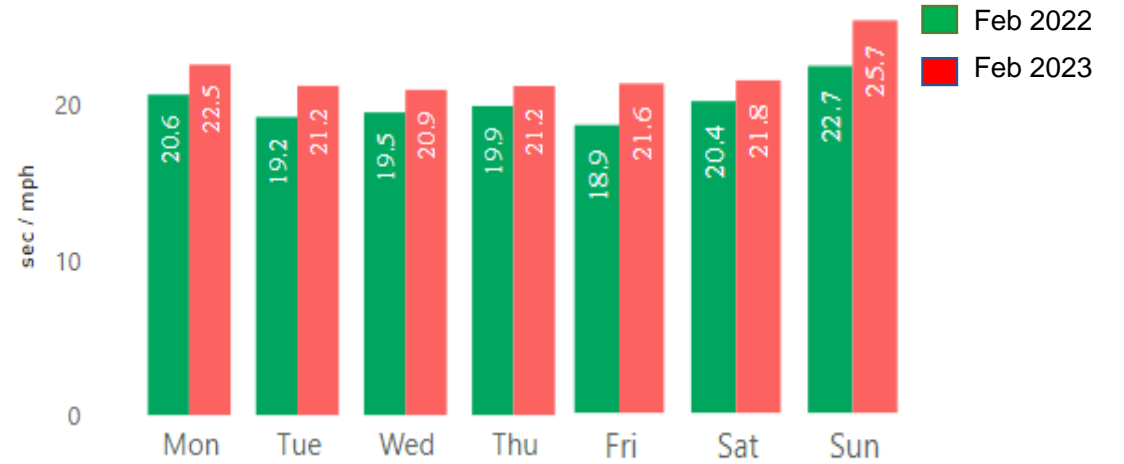
Tyne Tunnel Traffic

Week and weekend % of budgeted



Source: TT2

Average Speed (B1318 Great North Road)

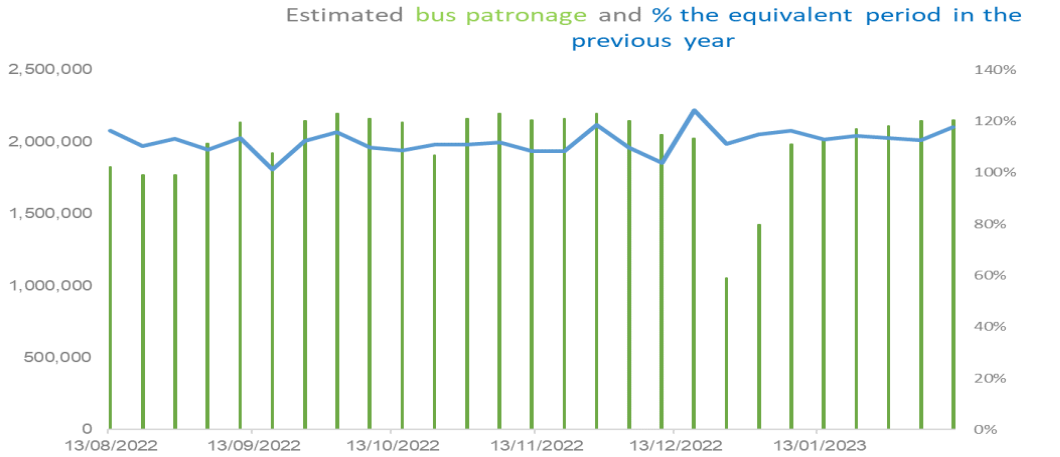


Source: Tyne and Wear UTMC

Through February 2023 traffic levels across Tyne and Wear were generally below February 2022 levels. February 2022 traffic levels were generally above pre-Covid levels.

Traffic through the Tyne Tunnel is higher than budgeted, particularly at the weekend.

Local bus



Source: Bus operators (Confederation of Passenger Transport)

Metro



Source: Nexus

Metro passenger levels reflect major line closures such as the Metro Flow line closure starting in September and continuing into December. National Rail strikes have also caused partial line closures. Bus patronage is up on the equivalent period in the previous year.

Weekly comparisons are skewed due to events and Christmas falling on a different day type compared to other years.

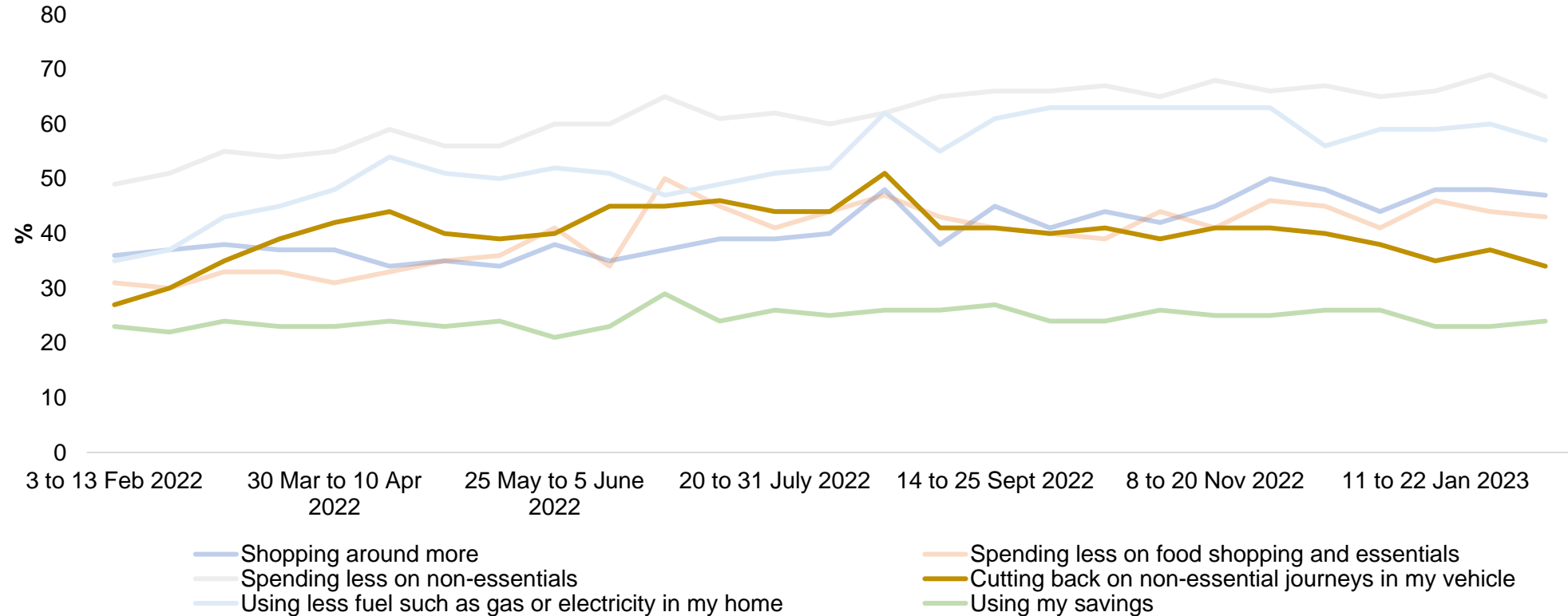
Pedestrian Rates- Count Site at Chester Road (near Sunderland University)



Source: Transport North East Counter Data

Cost of Living and Transport

The cost of living feature this month focusses on the steps people are taking to cope with the cost of living crisis. A recent ONS survey found that the most commonly responded issue facing the UK today was the cost of living (91%), which has impacted behaviours. The graph below charts some core behaviours that people may take due to the cost of living crisis, and we can see that cutting back on non essential journeys was at it's lowest rate since February last year.



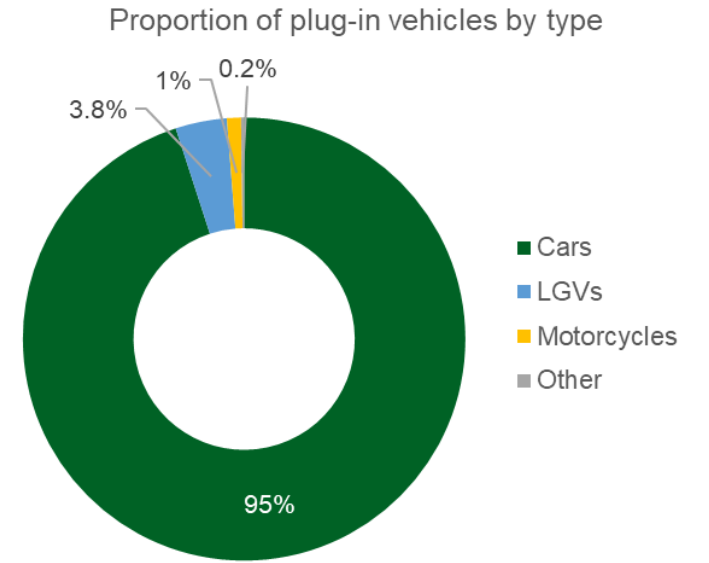
Source: Office for National Statistics [Public opinions and social trends, Great Britain - Office for National Statistics](#)

Plug-in electric vehicles

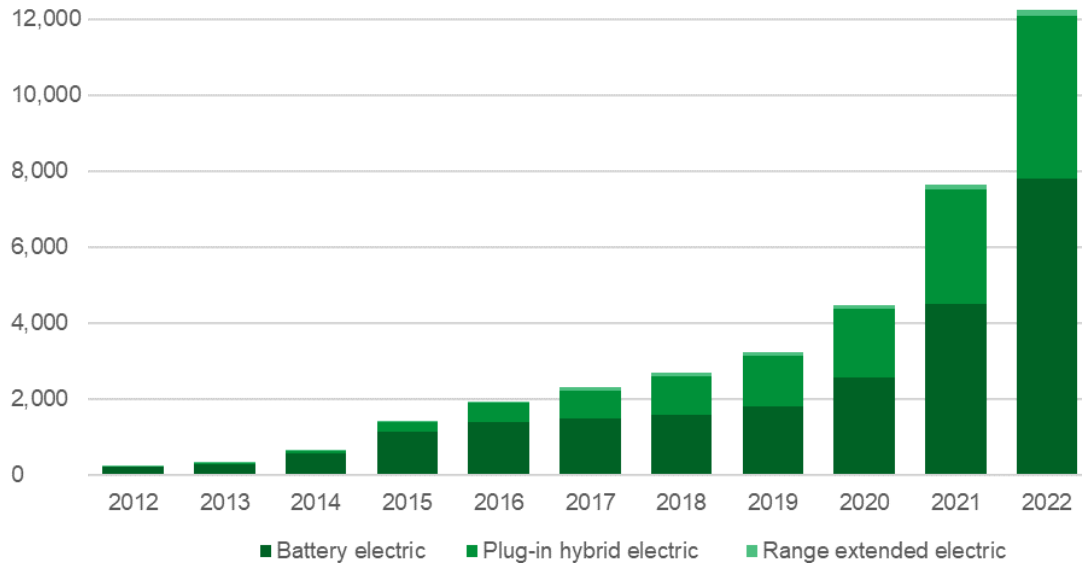
According to published vehicle licensing statistics for July to September 2022, there were almost 12,300 Plug-in Vehicles (PiVs*) in the North East. This includes battery electric, plug-in hybrids and range-extended electric models of all vehicle types. 64% of the licensed PiVs are battery electric and are thus zero emission vehicles (i.e. have no tailpipe emissions).

The vast majority of PiVs in the region are cars (95%), with vans (LGVs) comprising most of the remaining vehicles (3.8%).

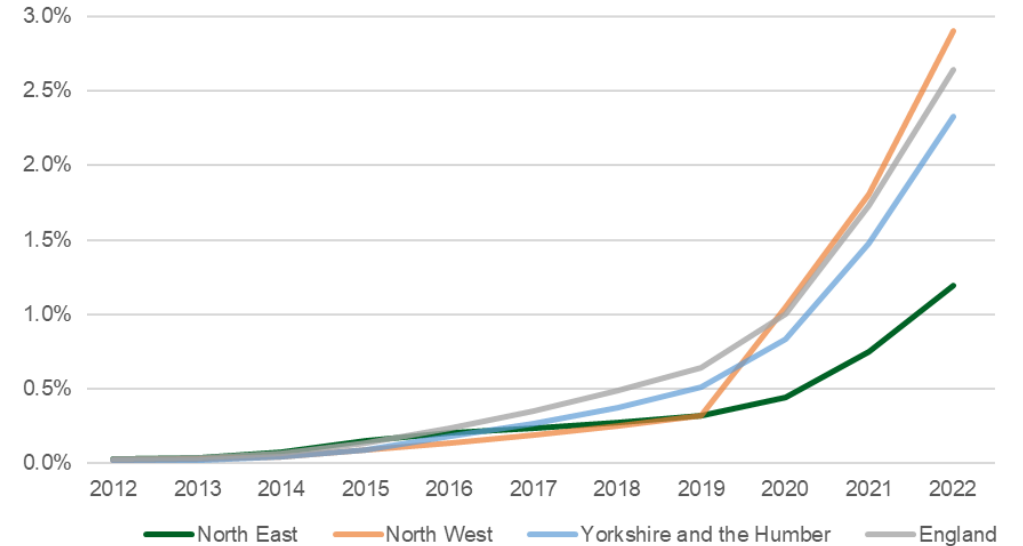
There has been a surge in PiVs licensed in recent years, with x3.5 increase since 2019 in the North East, and they now comprise 1.2% of all licensed vehicles in the North East. However the region lags behind other areas, with PiVs making up 2.9% of all vehicles in the North West and 2.3% in Yorkshire and the Humber.



Number of plug-in electric vehicles in the North East



Plug-in electric vehicle as a proportion of all licensed vehicles



* Note the figures do not include hybrid electric vehicles that are not plug-in. As of June 2022 there were 20,565 such hybrid vehicles in the North East.

Source: Department for Transport and Driver Vehicle Licensing Agency statistics [Vehicle licensing statistics: July to September 2022 - GOV.UK \(www.gov.uk\)](https://www.gov.uk/government/statistics/vehicle-licensing-statistics-july-to-september-2022)

Moving to a green, healthy, dynamic and thriving North East.

Transport North East