

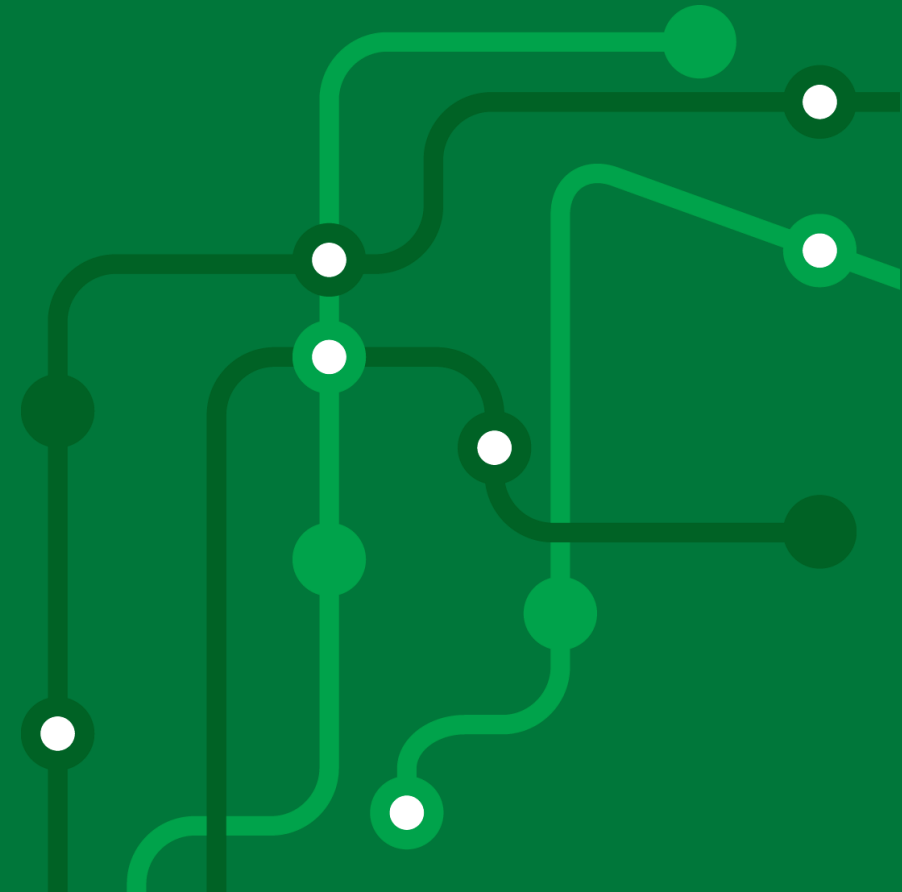
# Transport **North East**

## Transport Dashboard

Monthly update

8<sup>th</sup> February 2023

Moving to a green, healthy, dynamic and thriving North East.



# Monthly highlights



Bus passenger numbers in January were estimated to be around **77%** of pre-Covid levels, compared to 81% in December.



Metro passenger numbers in January were estimated to be around **84%** of 2019/20 levels, compared to 92% in December.



Averages speeds on the B1318 Great North Road were higher in January than in January 2022 on both weekdays and weekends.



Daily January cycling rates at the Millennium Bridge were around **47% up** on daily December rates.



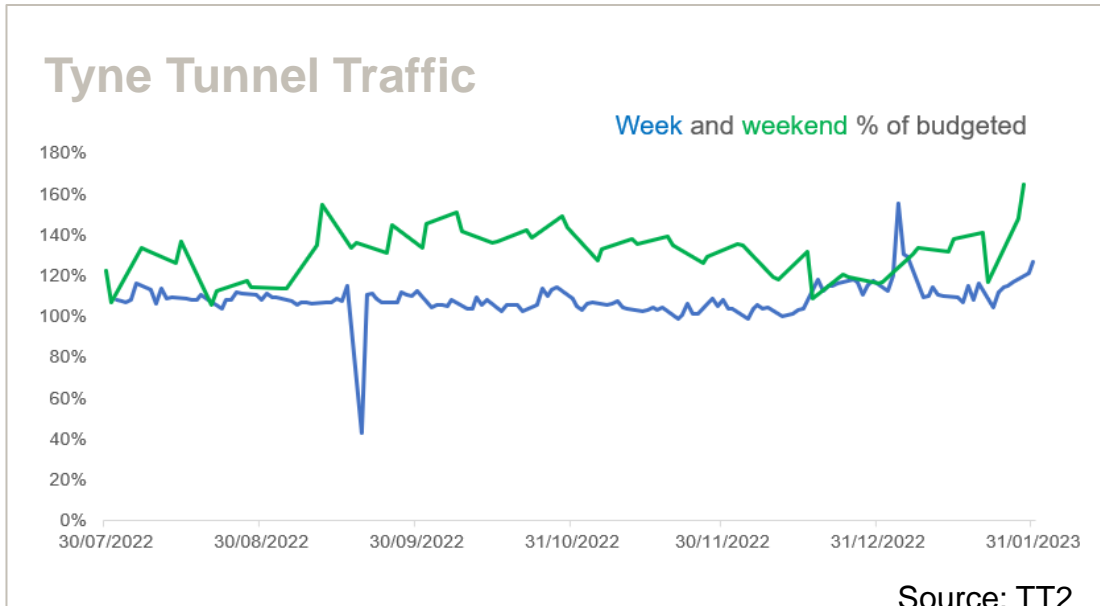
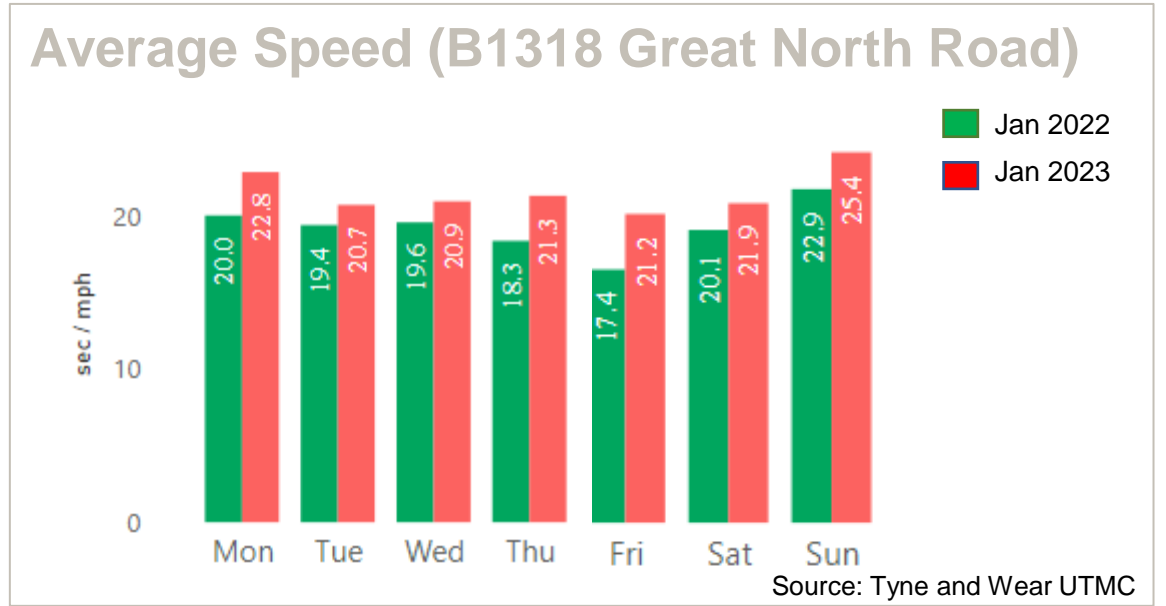
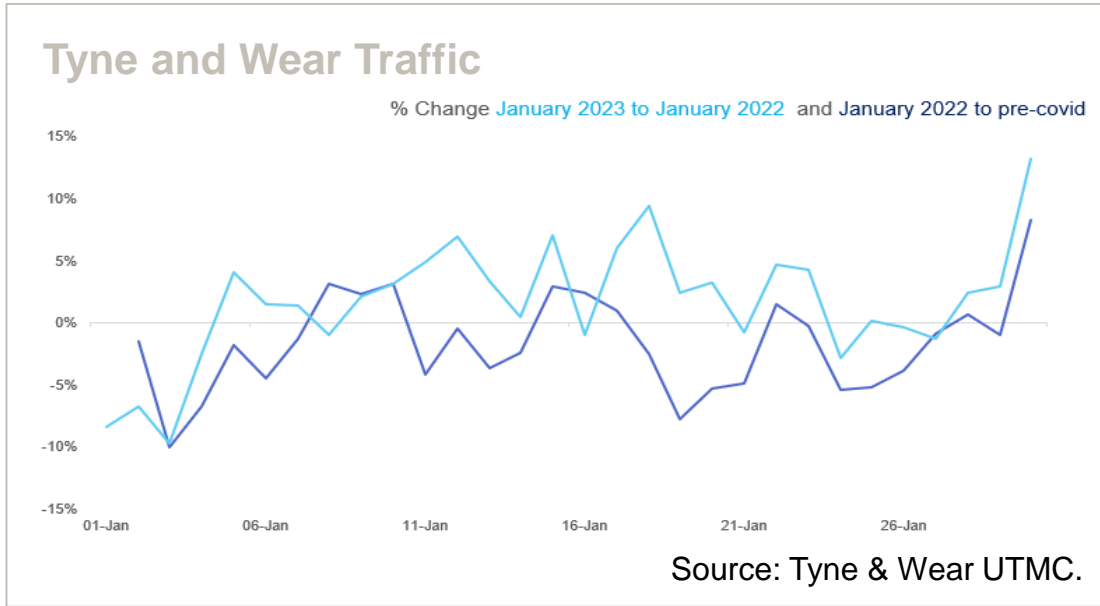
According to a national survey by the ONS, **20%** of respondents travelled to work in the previous 7 days by bicycle or on foot.

Source: [Public opinions and social trends, Great Britain: travel to work and rail disruptions - Office for National Statistics](#)



Bus punctuality at all timing points for the three largest operators in the region was **81%** in the latest period. Staffing issues can negatively affect punctuality figures.

# Road traffic



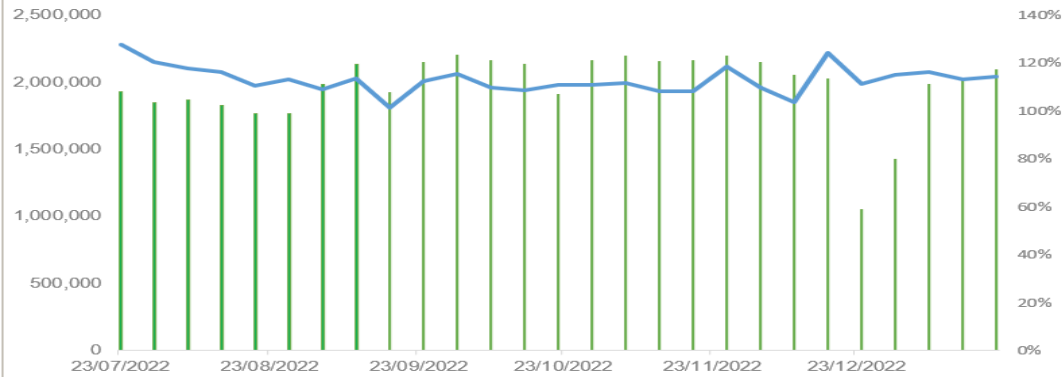
Through January 2023 traffic levels across Tyne and Wear was generally above January 2022 levels. January 2022 traffic levels were generally below pre-covid levels.

Traffic through the Tyne Tunnel is higher than budgeted, particularly at the weekend.

# Sustainable transport

## Local bus

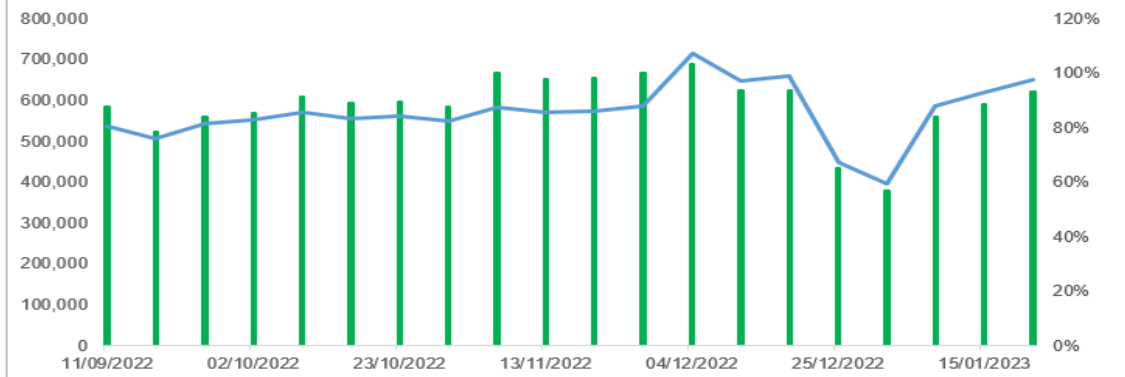
Estimated bus patronage and % the equivalent period in the previous year



Source: Bus operators (Confederation of Passenger Transport)

## Metro

Weekly estimated passengers and as a % the equivalent period in the previous year

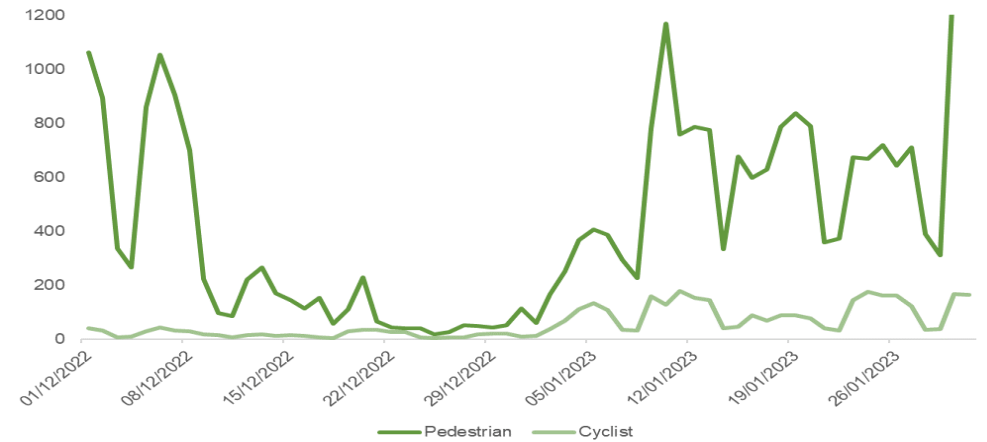


Source: Nexus

Metro passenger levels reflect major line closures between St James and Tynemouth for almost 2 weeks in July as well as Metro Flow line closure starting in September and continuing into December. National Rail strikes have also caused partial line closures.

Weekly comparisons are skewed due to events and Christmas falling on a different day type compared to other years.

## Active Travel Rates- Count Site at Queen Victoria Road (Newcastle)



Source: Transport North East Counter Data

Moving to a green, healthy, dynamic and thriving North East.

**Transport North East**

# Cost of Living and Transport

Our spotlight feature this month focusses on inflation and transport. This graph shows the annual inflation rates (%) of the Consumer Price Index (including housing costs) against Transport and Motor Fuels (a subset of transport). We can see that inflation for transport has decreased for six successive months, with a decrease in motor fuel inflation notable across that period.

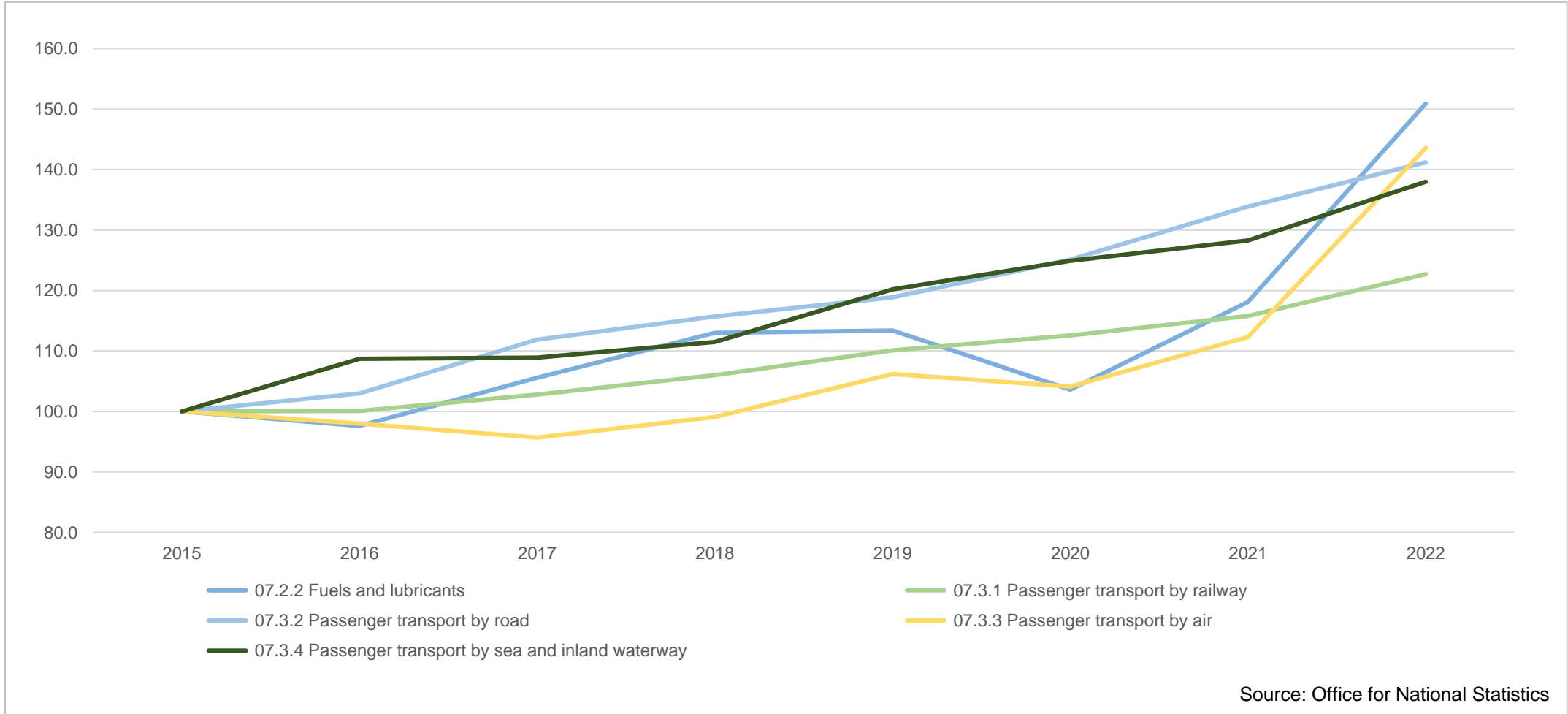


Moving to a green, healthy, dynamic and thriving North East.

**Transport North East**

# Cost of Living and Transport

This graph focusses on the annual average indices of inflation for Transport Services as well as the rate for fuels and lubricants compared to 2015 as the index year. We can see that Transport Services and the cost of fuels and lubricants have all increased from 2015, with the annual average of fuel in 2022 showing an increase of just over 50%. As could be seen on the previous graph, this is decreasing in recent months, however is still above the level for the same period for 2021.



Moving to a green, healthy, dynamic and thriving North East.

**Transport North East**