

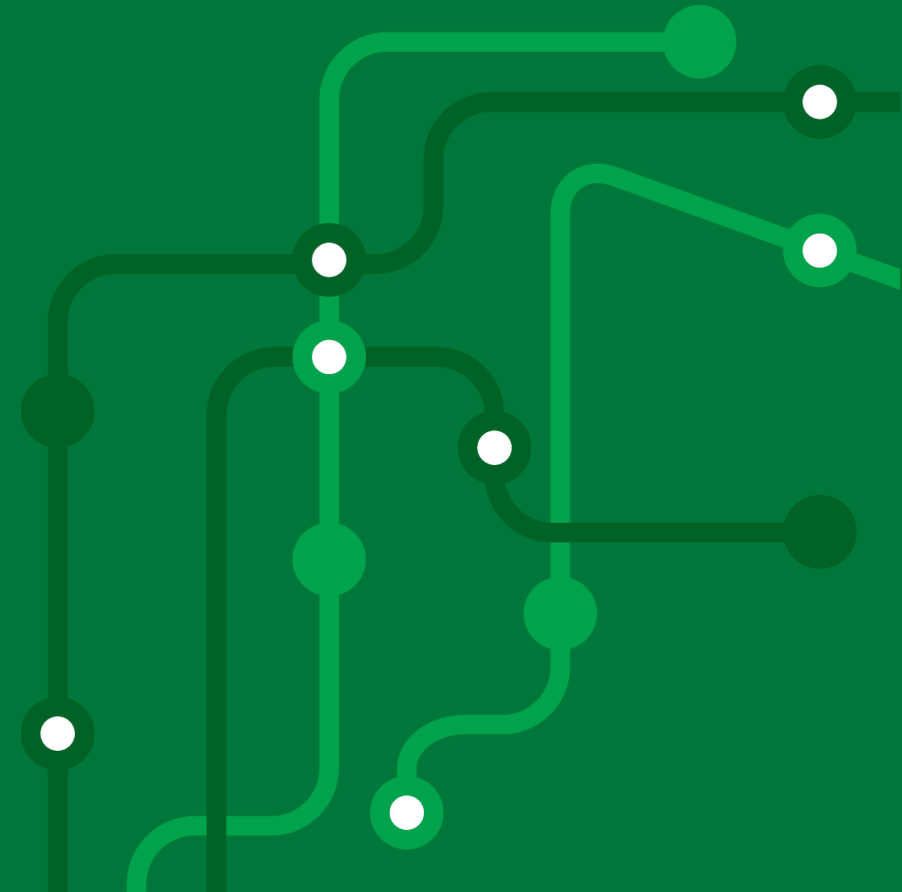
Transport **North East**

Transport Dashboard

Monthly update

7th January 2022

Moving to a green, healthy, dynamic and thriving North East.



Monthly highlights



Bus punctuality at all timing points for the three largest operators in the region was **82%** in the latest period.



Passenger numbers in December were **90%** of typical levels, compared to 82% in November.



Traffic levels in Tyne & Wear have remained **similar** to 2019 levels in December.



In the Transport Focus December surveys, **7%** of respondents from the NE had travelled by train in the previous 7 days.



In December, cycling levels in the region were **slightly lower** than December 2019.



Retail footfall numbers in December were **125%** of 2019 levels, compared to 113% in November.



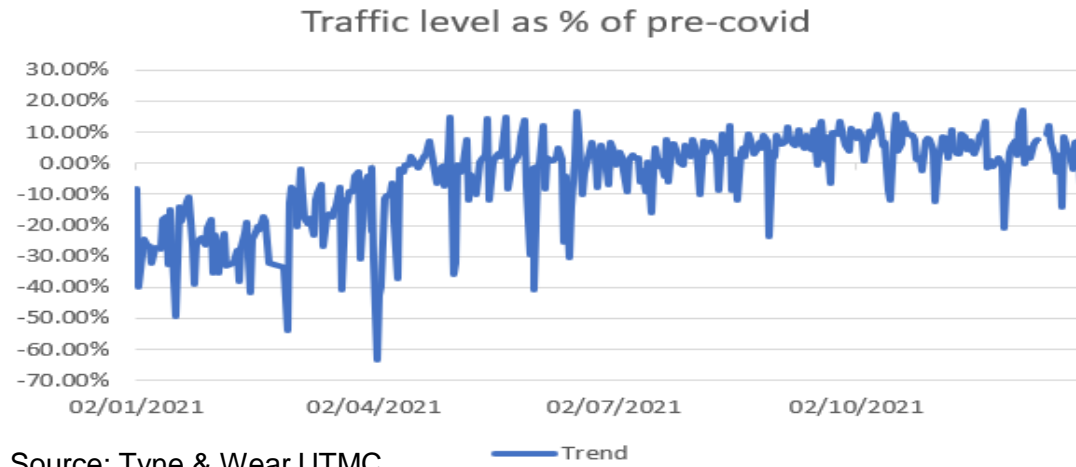
The route with the greatest journey time variability recorded in December was the Great North Road.



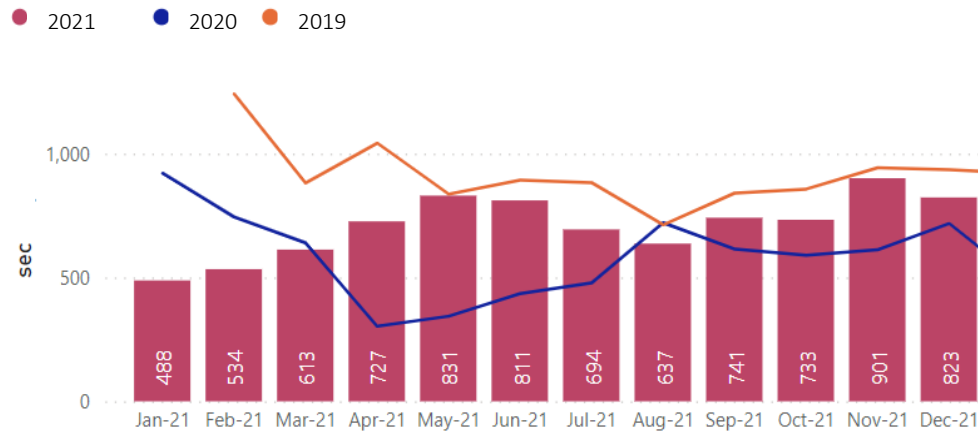
51.4% of businesses in the region found vacancies more difficult to recruit in December compared to 43.3% in the UK

Road traffic

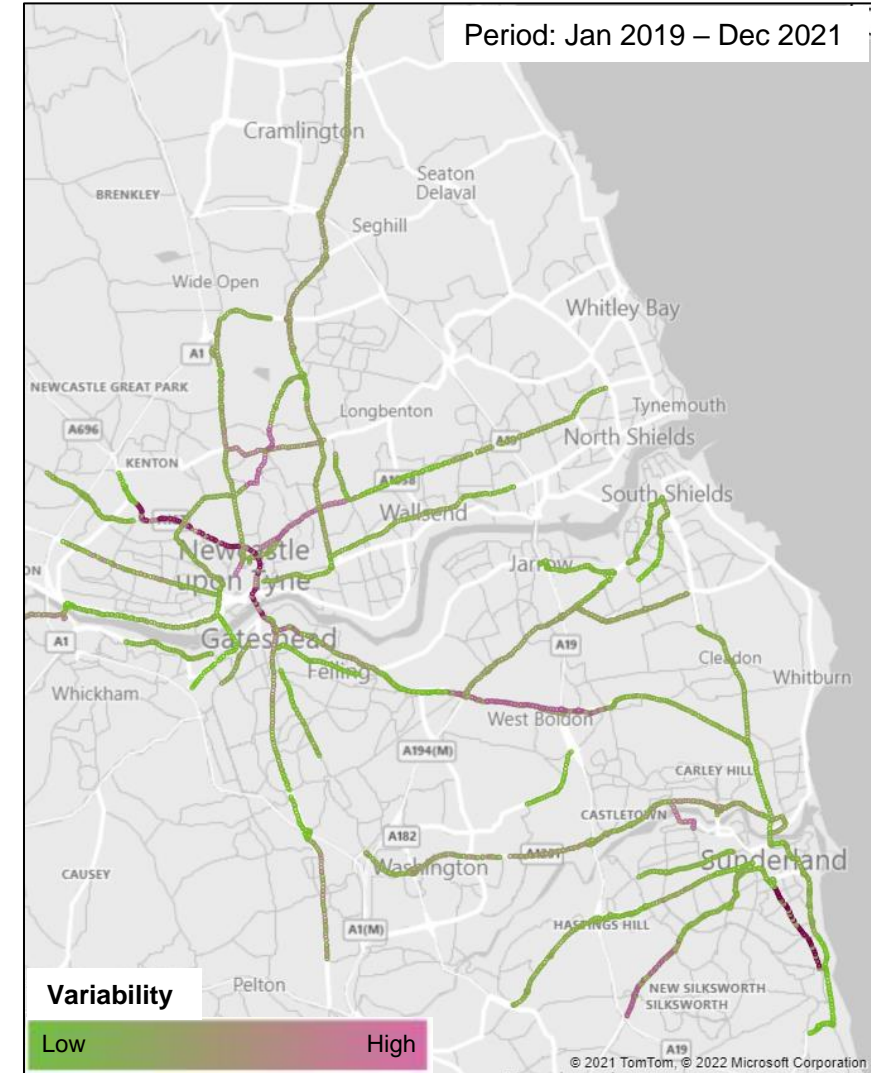
Regional traffic



Journey time variability by month



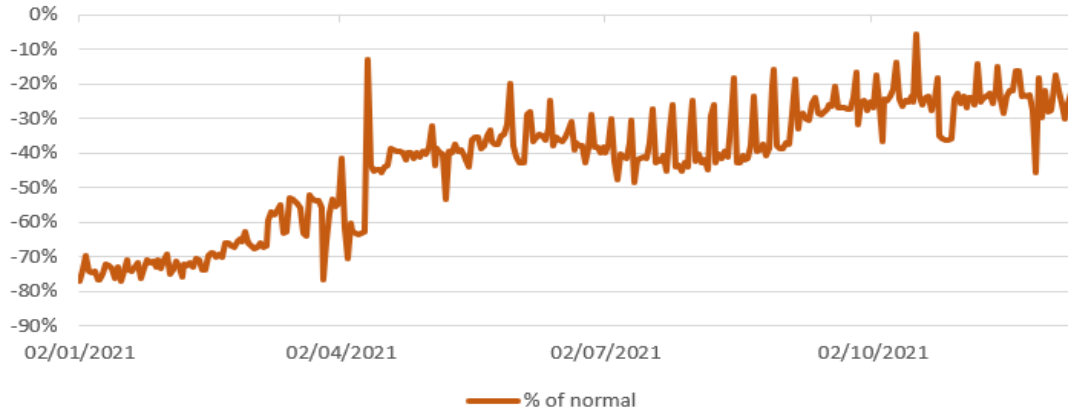
Journey time variability map



Sustainable transport

Local bus

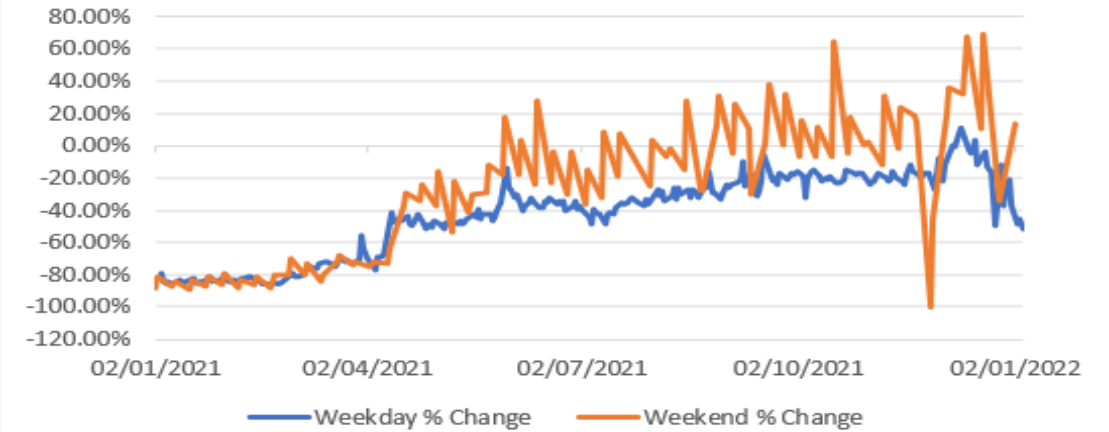
Bus Boardings % of normal



Source: Bus operators (Confederation of Passenger Transport)

Metro

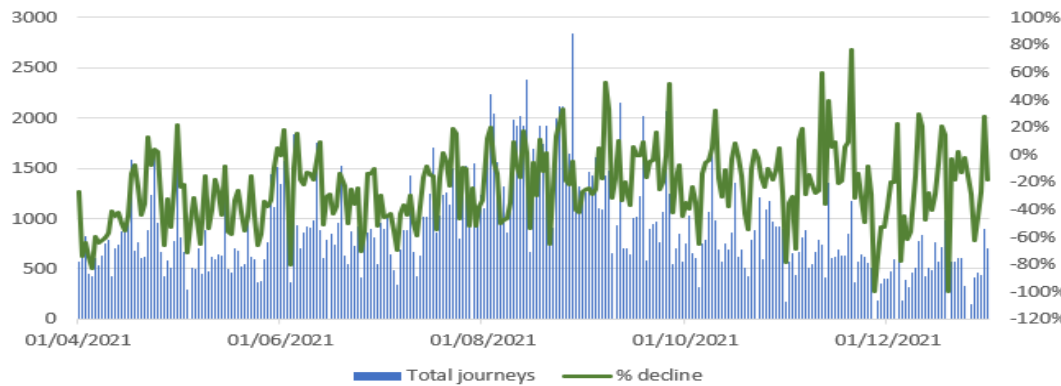
Metro % of expected



Source: Nexus

Ferry

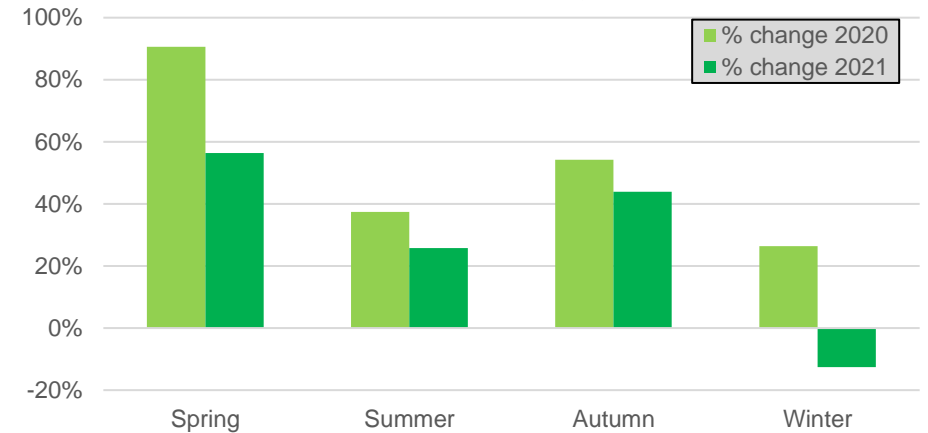
Shields Ferry % change relative to typical usage



Source: Nexus

Cycling

Average % change in cycle volume from pre-pandemic levels at selected sites in Tyne & Wear

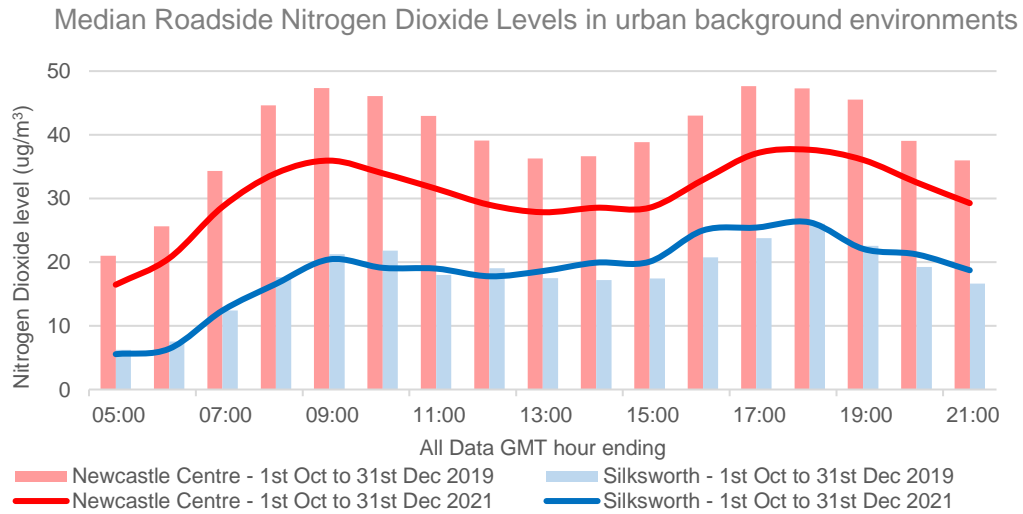
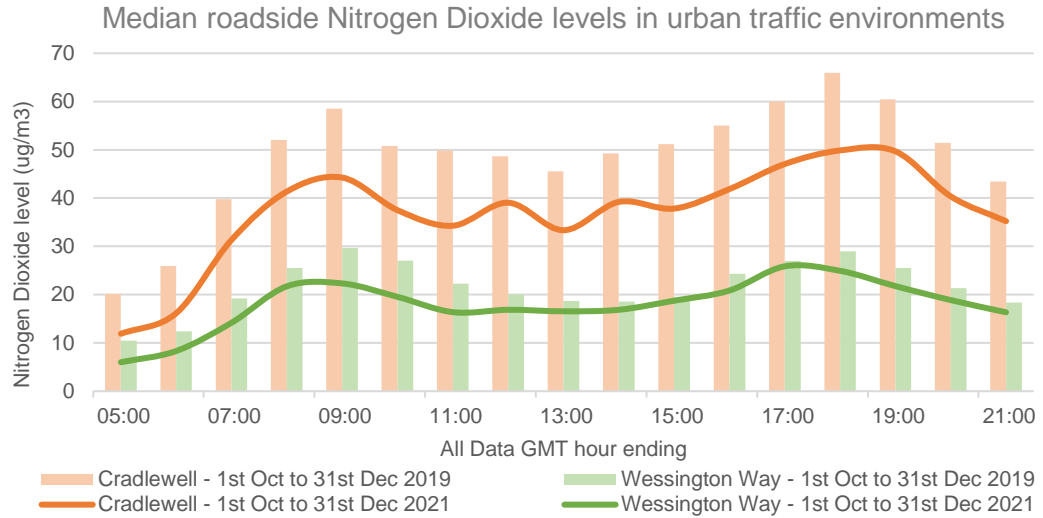


Source: TADU

Moving to a green, healthy, dynamic and thriving North East.

Transport North East

Air quality



Source: DEFRA UK-AIR

Car parking

Average occupancy	Weekday (7am-7pm)		Weekend (7am-7pm)	
	Dec-19	Dec-21	Dec-19	Dec-21
Car park	Dec-19	Dec-21	Dec-19	Dec-21
Baltic	34%	9%	26%	No data
Claremont Road	34%	13%	36%	10%
Dean Street	67%	68%	68%	58%
Eldon Garden	58%	53%	65%	43%
Eldon Square	55%	54%	66%	47%
Ellison Place	26%	26%	27%	19%
Gateshead Civic Centre	44%	4%	3%	No data
Gateshead College	45%	62%	No data	No data
Grainger Town	37%	21%	35%	19%
Manors	35%	37%	20%	30%
Sage	47%	8%	32%	12%
Quarryfield Road	0.3%	5%	0.1%	0.4%

Red = decrease from 2019 and Green = increase from 2019

Source: UTMC

Deprivation and public transport accessibility

The public transport accessibility level for the 10% most deprived areas in the LA7 footprint is presented below along with a list of the ten most deprived areas and their public transport access level.

PT access level*	Proportion of most deprived areas**
Low	21%
Medium	62%
High	17%

*This has been determined based on proximity to public transport stopping points, frequency of services and reliability.

**Based on the Government's Index of Multiple Deprivation.

Rank	Area	Authority	PT access level*
1	Walker (south)	Newcastle	Medium
2	Byker (west)	Newcastle	High
3	Blyth Croft / Cowpen	Northumberland	Medium
4	Benwell (south)	Newcastle	High
5	Bishop Auckland (south)	Co. Durham	Low
6	Hendon (east)	Sunderland	Medium
7	Blakelaw (east)	Newcastle	Medium
8	Elswick (east)	Newcastle	High
9	Byker (east)	Newcastle	High
10	Easington Colliery	Co. Durham	Low

Moving to a green, healthy, dynamic and thriving North East.

Transport North East